



**10<sup>th</sup> ANNIVERSARY**

★ 2012 – 2022 ★

**MAMMOTH TRAILS**

**RECREATION FOR ALL**



# MAMMOTH TRAILS

A stylized, low-poly illustration of a mountain range. The mountains are rendered in various shades of green and blue, with a prominent yellow sun in the upper right corner. The background is a light blue sky with horizontal lines. In the bottom left corner, there is a small silhouette of a tree and some bushes.

OCTOBER 26, 2023

- Mammoth Trails Overview
- Mammoth Lakes Trail System updates
- Partner Updates (that's you!)
- Inyo National Forest Over-Snow Vehicle Use Designation

# Who We Are

Mammoth Trails started in 2006 as a confederation of user groups convened to address issues among outdoor recreation user groups and provide a cohesive environment for smaller organizations to grow. Today, Mammoth Trails continues to be a collaborative effort to create and enhance outdoor recreation for our community, effectively and inclusively. As partners, allies and friends, Mammoth Trails offers the entire outdoor recreation community a space to share and discover local and regional happenings.



# What We Do

## DEMONSTRATE

Equity and  
inclusiveness  
Commitment to  
sustainable  
recreation

## COLLABORATE

Share information  
and resources  
Work together with  
an open mind

## RECREATE

Have fun!  
Go outside!





## Partners



**MAMMOTH LAKES  
RECREATION**



MAMMOTH LAKES TRAIL SYSTEM



And  
**YOU!**



*Trivia*

**What year was Mammoth Trails created as a confederation of user groups?**

**Answer: 2006**





**10<sup>th</sup> ANNIVERSARY**

★ 2012 – 2022 ★

**MAMMOTH TRAILS**

**RECREATION FOR ALL**



# TRAILS PROGRAM MANAGER UPDATES

Here is a short list of what we have been up to this season:

1. **MLTS Trail Maintenance**
2. **Black Bear Run Construction**
3. **Hazard Tree Removal**
4. **NEW Signs Installed along Multi Use Paths**
5. **Winter Grooming Expansion proposal to USFS**
6. **Mtn View Reroute and Bridge**
7. **SHARP Update**

# MLTS TRAIL MAINTENANCE



- Ongoing Logouts
- Sign Repair
- Minor tread work
- Replaced Bridge Railings on Horseshoe Loop

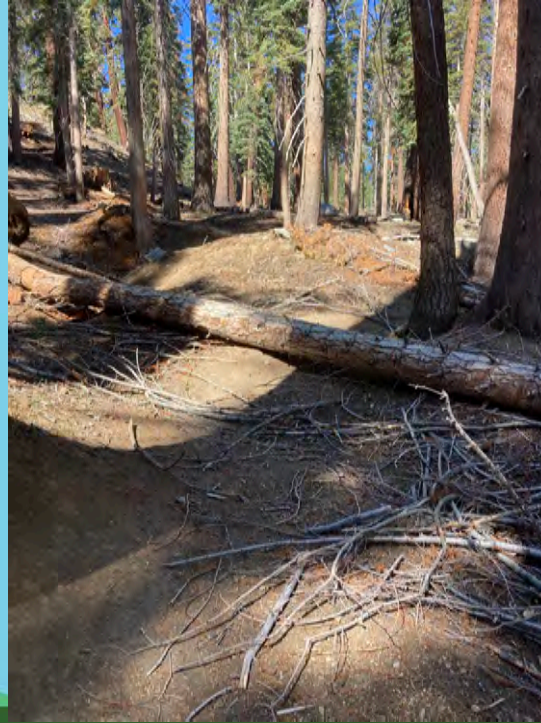
# MLTS TRAIL MAINTENANCE

- Logout and Tread Maintenance on Sherwin Lakes Trail



# MLTS TRAIL MAINTENANCE

## Logout on Mountain View and Panorama Dome



# MAINTENANCE



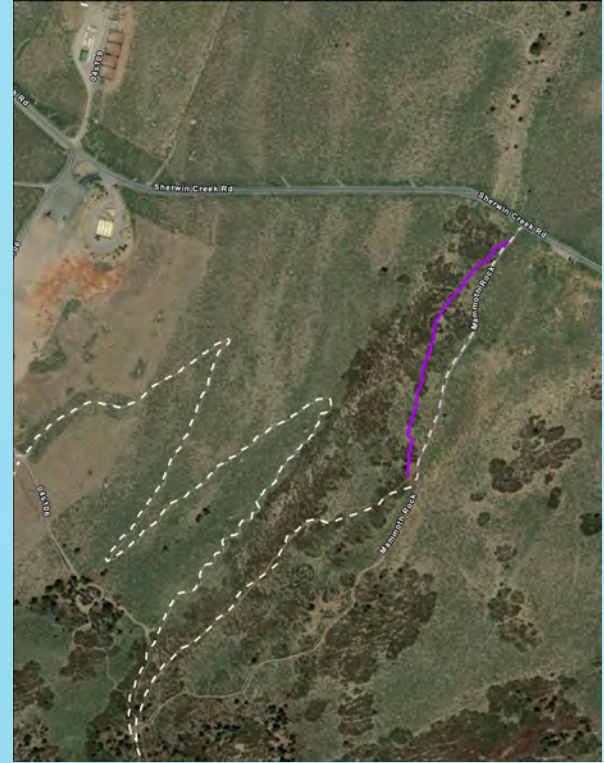
# SIGN STAINING



# TRAIL WORK BEFORE AND AFTER



# MAMMOTH ROCK TRAIL REROUTE





# MLTS TRAIL MAINTENANCE

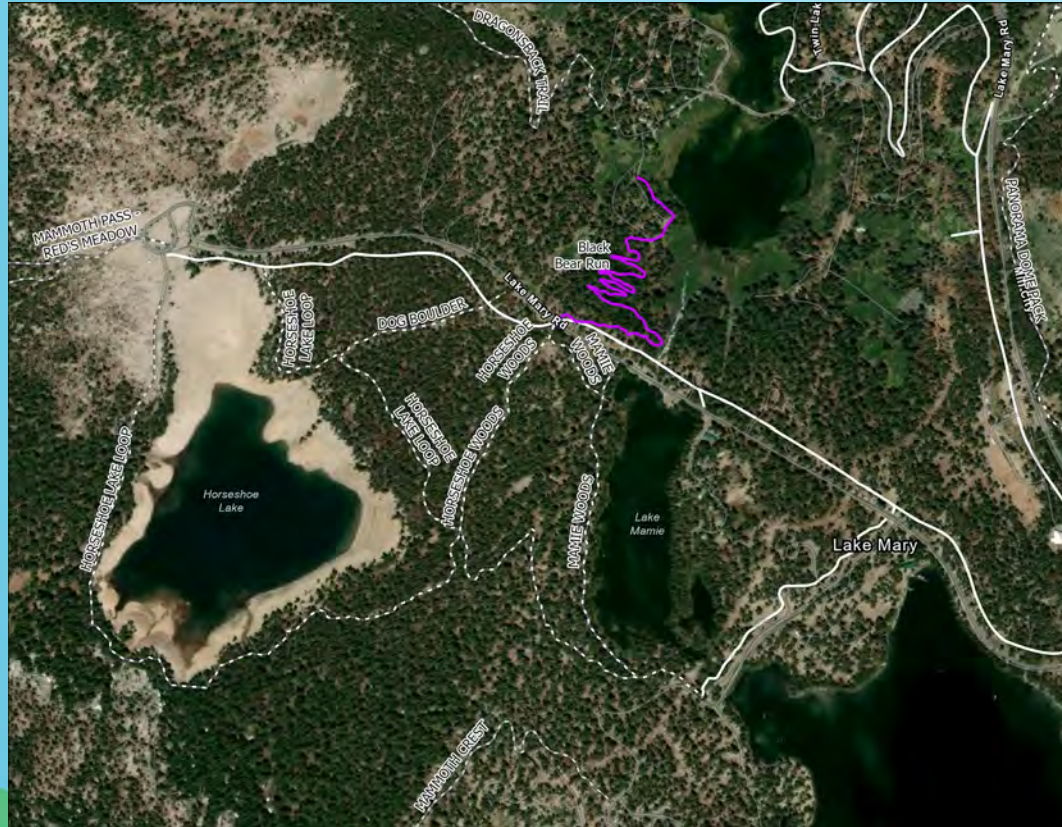
Installed Bike Tool Station @ Community Center



# LOWER ROCK CREEK TRAIL



# BLACK BEAR RUN



# BLACK BEAR RUN CONSTRUCTION



Volunteer  
Work Night!



**Wednesday 9/6**

Meet @ Twin Falls Overlook Picnic area

**Work: 5-7pm**

**Beer/Food: 7-8pm**

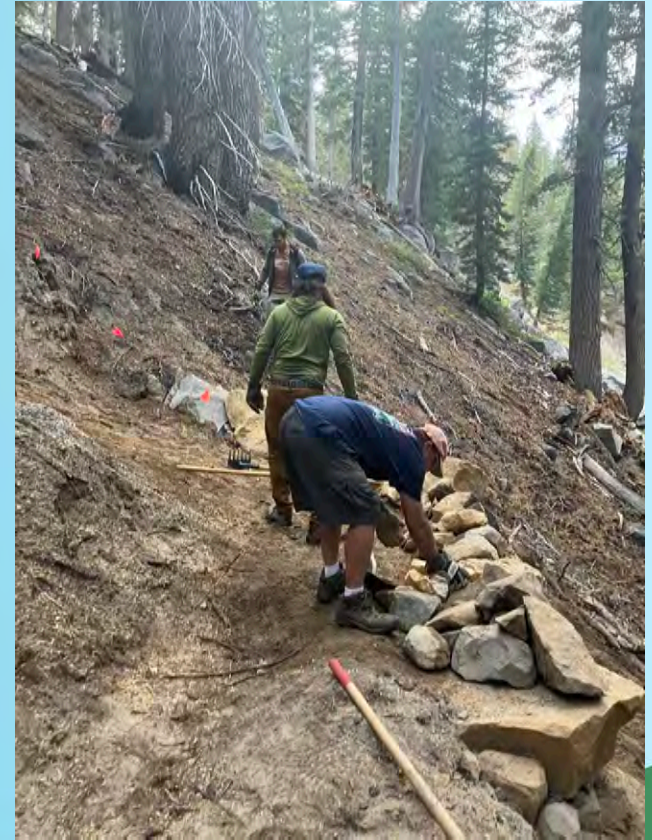
Please wear closed toed shoes and gloves



Questions: 760-965-6948



# BLACK BEAR RUN CONSTRUCTION



# HAZARD TREE REMOVAL

- Worked from Horseshoe down to Ronobe
- Still working with USFS to get some coordination with Frontier Communications concerning the Hazard trees below the pack Station
- Lakes Basin open to fire wood collection until Nov 30 (Snow dependent)



# HAZARD TREE REMOVAL



## NEW SIGNS INSTALLED ON MUPS

- 3 6a signs installed near Eagle Lodge
- Concrete footers poured for an additional 3 6as along Main St
- Concrete Footers Poured for ~~3~~ 6 signs in the Eagle Lodge area awaiting for maps to arrive before install (looking to spring 2024)





# TOWN LOOP SIGN ADDITIONS



# INTERPRETIVE SIGN INSTALLATION



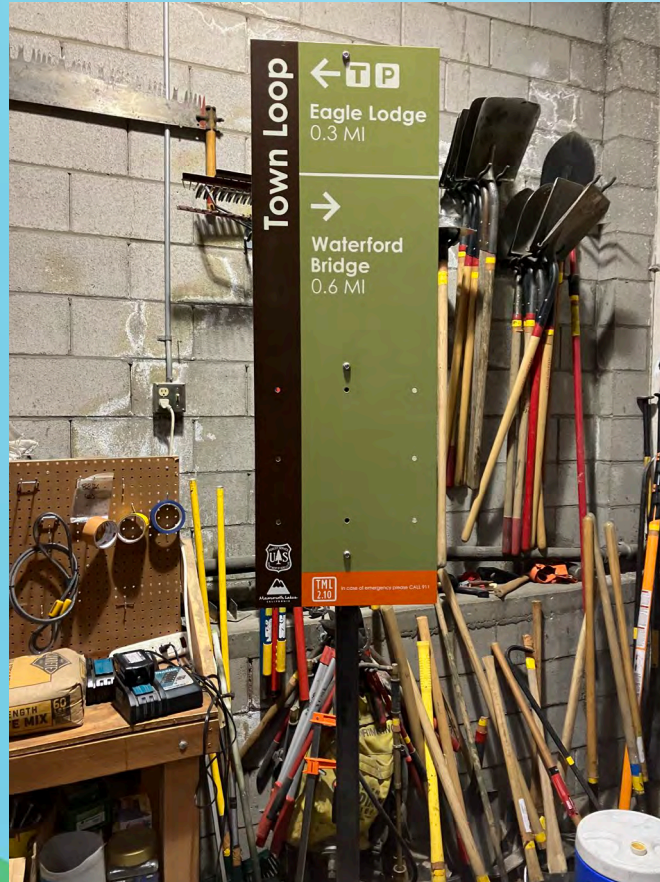
# E-BIKES: STEPS TAKEN TO DATE



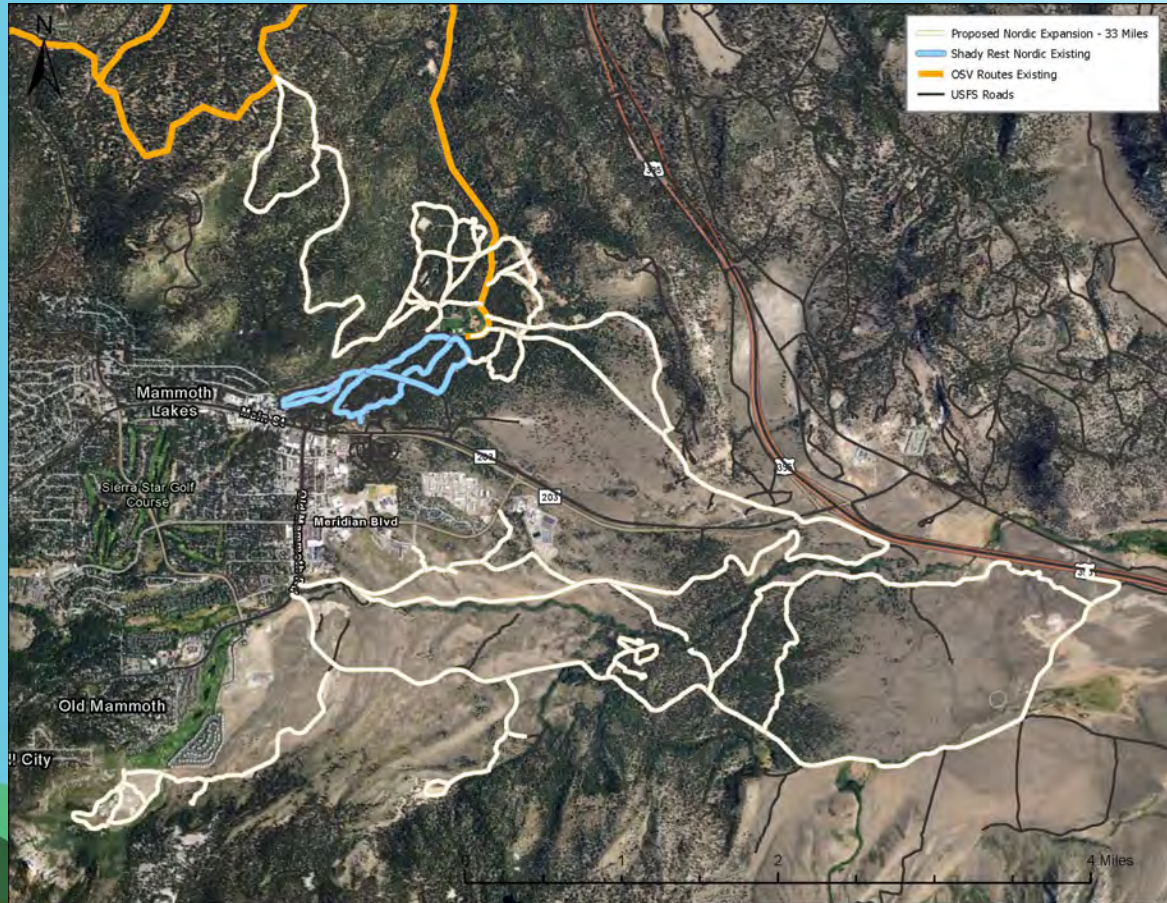
# NEW SIGNS INSTALLED ON MUPS



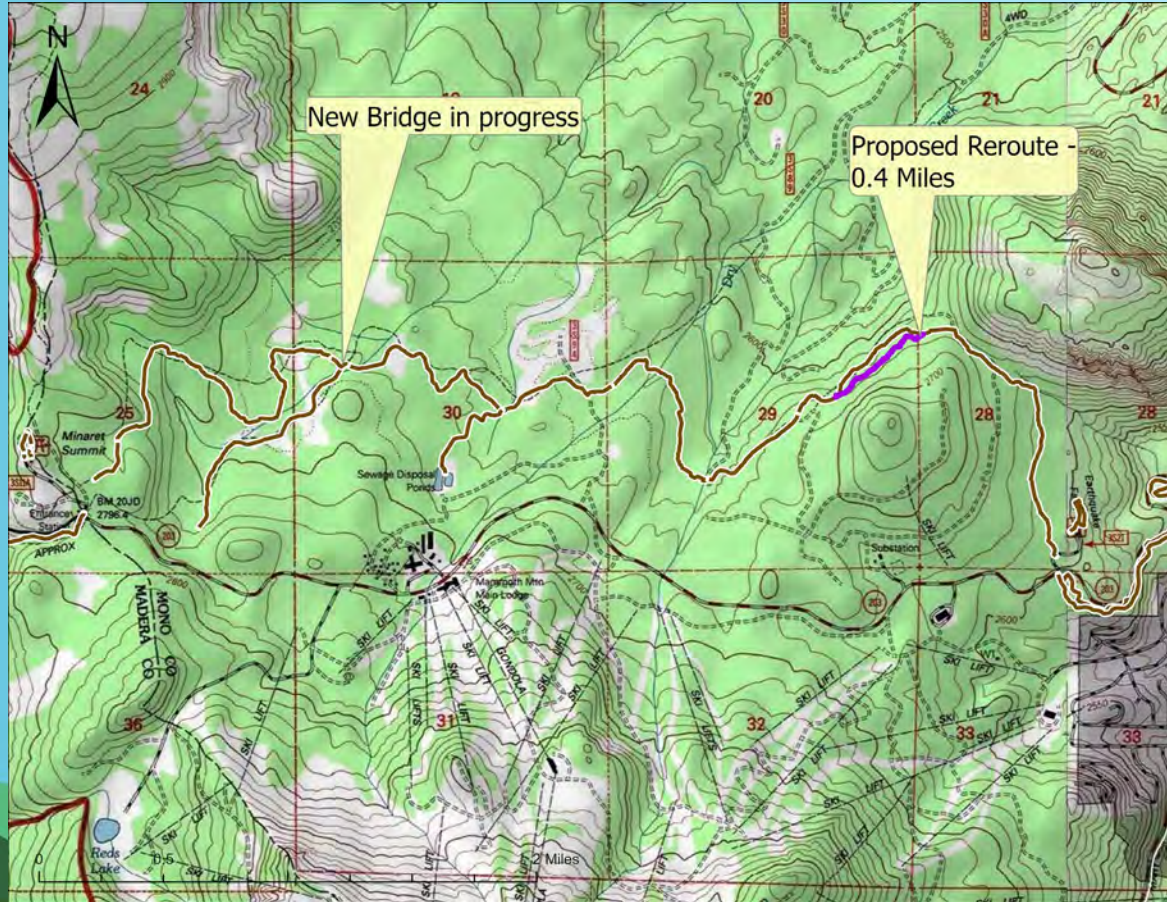
# NEW SIGNS INSTALLED ON MUPS



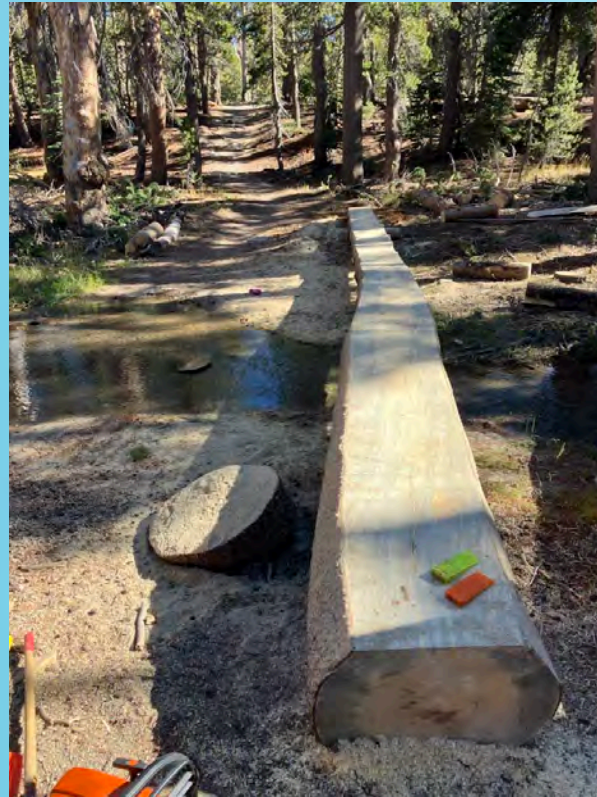
# WINTER GROOMING EXPANSION PROPOSAL TO USFS



# PROPOSED REROUTE ON MOUNTAIN VIEW TRAIL



# MOUNTAIN VIEW TRAIL IMPROVEMENTS





# SHARP UPDATE



A paved road with yellow dashed center lines and white edge lines winds through a forest. A wooden signpost is visible on the left side of the road. The background is filled with tall trees and green foliage.

*Trivia*

**How many Flashing Slow Signs were installed along the Lake Mary Path?**

**Answer: 3**



**10<sup>th</sup> ANNIVERSARY**

★ 2012 – 2022 ★

**MAMMOTH TRAILS**

**RECREATION FOR ALL**

# OUTDOOR RECREATION COORDINATOR UPDATES

The background of the slide is a stylized landscape illustration. It features several green mountains of varying heights and shades of green, set against a light blue sky. A large, bright yellow sun is positioned in the upper right corner. In the lower left corner, there is a small, dark green evergreen tree on a small hill. The overall style is clean and modern.

- Trail Days Summer of Stewardship
- Outdoor Recreation Host Program
- Trashy Thursdays
- Adopt A Trail

# TRAIL DAYS SUMMER OF STEWARDSHIP



- ♥ National Trail Days
- ♥ Trail Crew, Host, and Water Host Opportunities
- ♥ Trail Crew Wednesday Worknights
- ♥ Annual Lakes Basin Cleanup

# NATIONAL TRAIL DAYS



# TRAIL CREW, HOST, AND WATER HOST OPPORTUNITIES



# TRAIL CREW, HOST, AND WATER HOST OPPORTUNITIES





# TRAIL CREW WEDNESDAY WORKNIGHT



# TRAIL CREW WEDNESDAY WORKNIGHT



# TRAIL CREW WEDNESDAY WORKNIGHT



# ANNUAL LAKES BASIN CLEANUP



# ANNUAL LAKES BASIN CLEANUP



# ANNUAL LAKES BASIN CLEANUP



# ANNUAL LAKES BASIN CLEANUP



# OUTDOOR RECREATION HOSTS



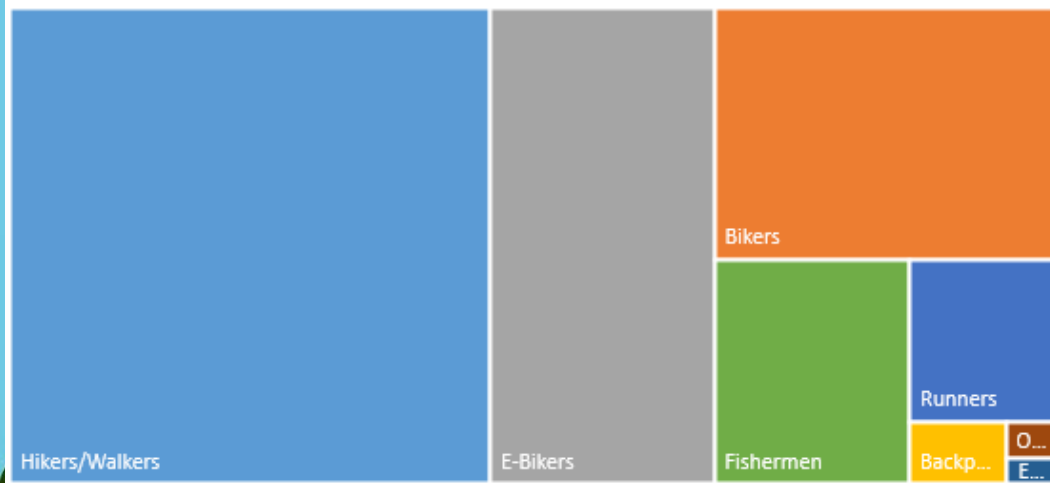


# OUTDOOR RECREATION HOSTS

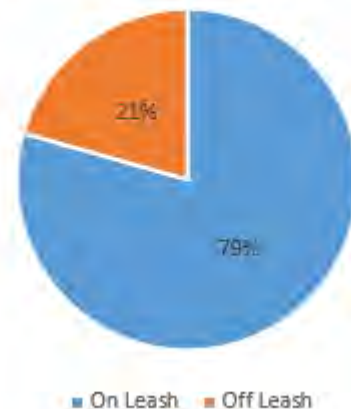


## Summer 2023 Observed User Groups

- Hikers/Walkers
- Bikers
- E-Bikers
- Backpackers
- Runners
- Fishermen
- Equestrian
- OHV



## OBSERVED DOG LEASH USE JULY 1 - AUGUST 15, 2023



# OUTDOOR RECREATION HOSTS



# TRASHY THURSDAYS



# ADOPT A TRAIL

Year	Volunteers	Reported Hours	Trash (pounds)	Fishing Line (feet)	Dog Waste (pounds)
2020	10	52	110	200	25
<b>2021</b>	22	<b>263.5</b>	<b>565</b>	<b>1470</b>	<b>75.5</b>
2022	26	96.5	280	800	24.5
2023	30	165.5	550	930	59.5

# ADOPT A TRAIL



## *Trivia*

**Name one of the Summer of Stewardship programs YOU can be a part of with the MLTS.**

**Answer: National Trail Days, Water Host, Trail Crew Volunteer, Annual Lakes Basin Clean Up, Adopt A Trail, Trashy Thursdays**





**10<sup>th</sup> ANNIVERSARY**

★ 2012 – 2022 ★

**MAMMOTH TRAILS**

**RECREATION FOR ALL**

# MAMMOTH TRAILS PARTNER UPDATES







**10<sup>th</sup> ANNIVERSARY**

★ 2012 – 2022 ★

**MAMMOTH TRAILS**

**RECREATION FOR ALL**



**OSV SUBPART-C**

**OFFICE OF OUTDOOR RECREATION**



# TABLE OF CONTENTS

**01** RULES & REQUIREMENTS

**02** WHAT IS THE PROPOSED ACTION

**03** HOW TO SUBMIT COMMENTS & TIMELINES

**04** MAMMOTH SPECIFIC INFO



A stylized landscape illustration. The background is a light blue sky with a large yellow sun in the top right corner. The foreground features green mountains and hills of various shades, with several dark green coniferous trees scattered across the scene. The overall style is flat and geometric.

01

# **RULES & REQUIREMENTS**

# RULES AND REQUIREMENTS OF OSV PLANNING

---

The purpose of this project is to effectively manage over-snow vehicle (OSV) use on the Inyo National Forest by using the required criteria (36 CFR 212.55):

- Provide access and recreational opportunities
- Ensure that OSV use is designated only where there is adequate snow
- Promote the safety of all users
- Minimize impacts to natural and cultural resources
- Minimize conflicts among the various uses.



# RULES AND REQUIREMENTS OF OSV PLANNING

---

Forest Service “Travel Management” rules require the Inyo National Forest to designate roads, trails, and areas that are open to over-snow vehicle use.



## WHAT ELSE DOES THE RULE SAY?

---

*“Over-snow vehicle use on National Forest System roads, on National Forest System trails, and in areas on National Forest System lands shall be designated by the Responsible Official on administrative units or Ranger Districts, or parts of administrative units or Ranger Districts, of the National Forest System where snowfall is adequate for that use to occur.”*

36 CFR 212.81(a)

## WHAT DOES THE RULE SAY?

*“This subpart provides for a system of National Forest System roads, National Forest System trails, and areas on National Forest System lands that are designated for over-snow vehicle use. After these roads, trails, and areas are designated, over-snow vehicle use not in accordance with these designations is prohibited by 36 CFR 261.14. Over-snow vehicle use off designated roads and trails and outside designated areas is prohibited by 36 CFR 261.14.”*

36 CFR 212.80

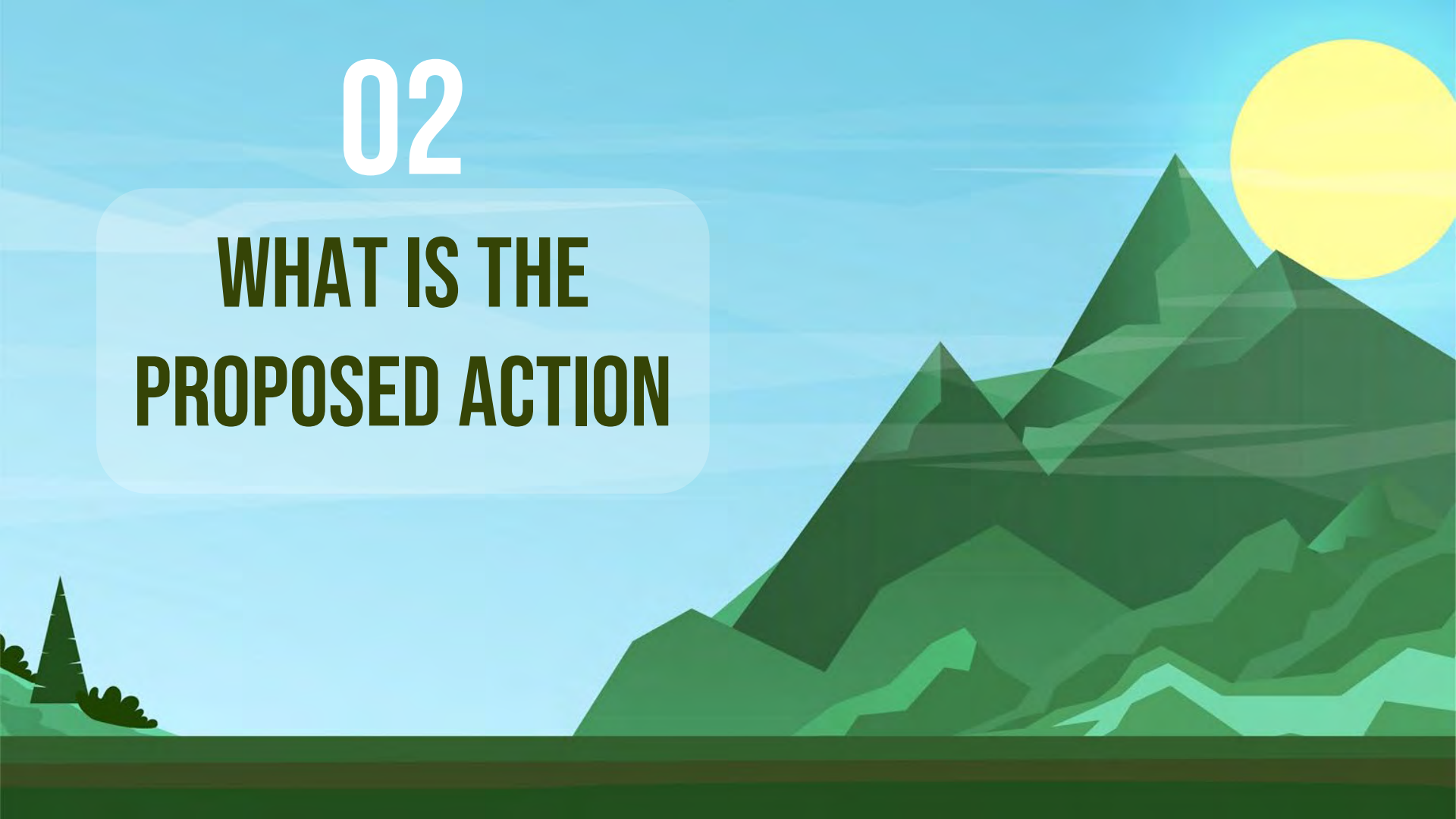
**Translation:**

**All areas not specifically designated for OSV use are CLOSED to OSV use**



02

**WHAT IS THE  
PROPOSED ACTION**



# WHAT IS INCLUDED IN THE PROPOSED ACTION?

---

- The decision only applies to public, recreational OSV use. The decision does not apply to special permit, administrative, or emergency OSV use.
- The decision will apply only to motorized OSV use, and which roads, trails and areas will be designated for OSV use.
- The Forest also has the authority to consider class of vehicle and season of use as part of the decision.
- The decision is about OSV management, not winter recreation management – it will not address other recreational uses or other recreational facilities except where they are affected by OSV use and where actions may minimize effects to other recreational uses.

# WHAT IS THE CURRENT SITUATION?

---

The entire Forest is open to OSV use, except where it is specifically prohibited.

The current situation does not meet the Travel Management Regulations (36 CFR 212, Subpart C), and therefore the Forest must determine which areas to designate for OSV use.

# AREAS WITH ADEQUATE SNOWFALL

---

## How we determined adequate snowfall:

- The Forest Service Remote Sensing Lab used data from NOAA's Snow Data Assimilation System (SNODAS) to model average snow depth. Data was averaged from winter 2003/2004-2021/2022.
- Areas that receive at least 12 inches of snow on average for at least 5 days per year receive adequate snowfall for cross-country OSV use and were considered OSV area designation.
  - Any areas that do not meet that snow depth requirement were removed from area designation
  - OSV trail designation (over NF System Roads) was considered across the entire Forest.

# HOW DID WE DEVELOP THE PROPOSED ACTION?

---

- Determined which areas could not be designated, based on law, regulation, and Inyo National Forest land management plan.
- Determined which areas had adequate snowfall for consideration for OSV area designation or OSV trail designation.
- Determined where there could be adverse impacts to natural or cultural resources, or other recreational uses.
- Determined whether those impacts could be reasonably minimized, and if so, prescribe management requirements to minimize those impacts.

# WHICH AREAS WERE NOT CONSIDERED AT ALL?

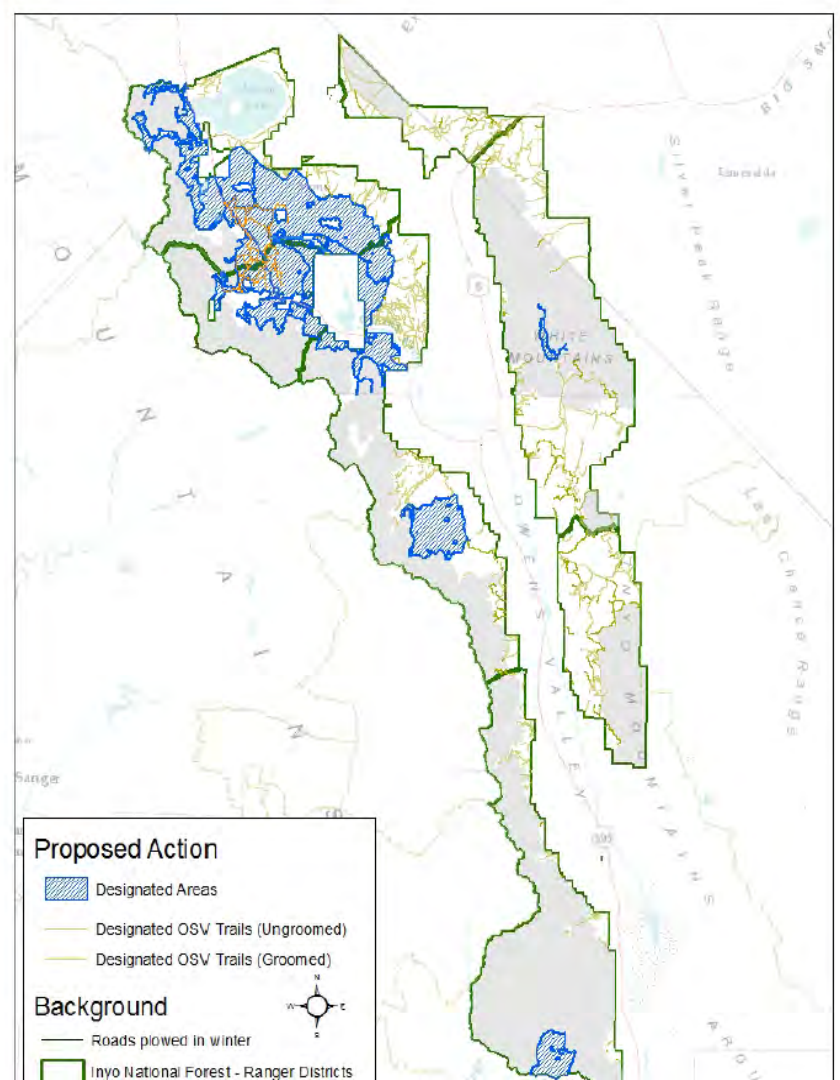
---

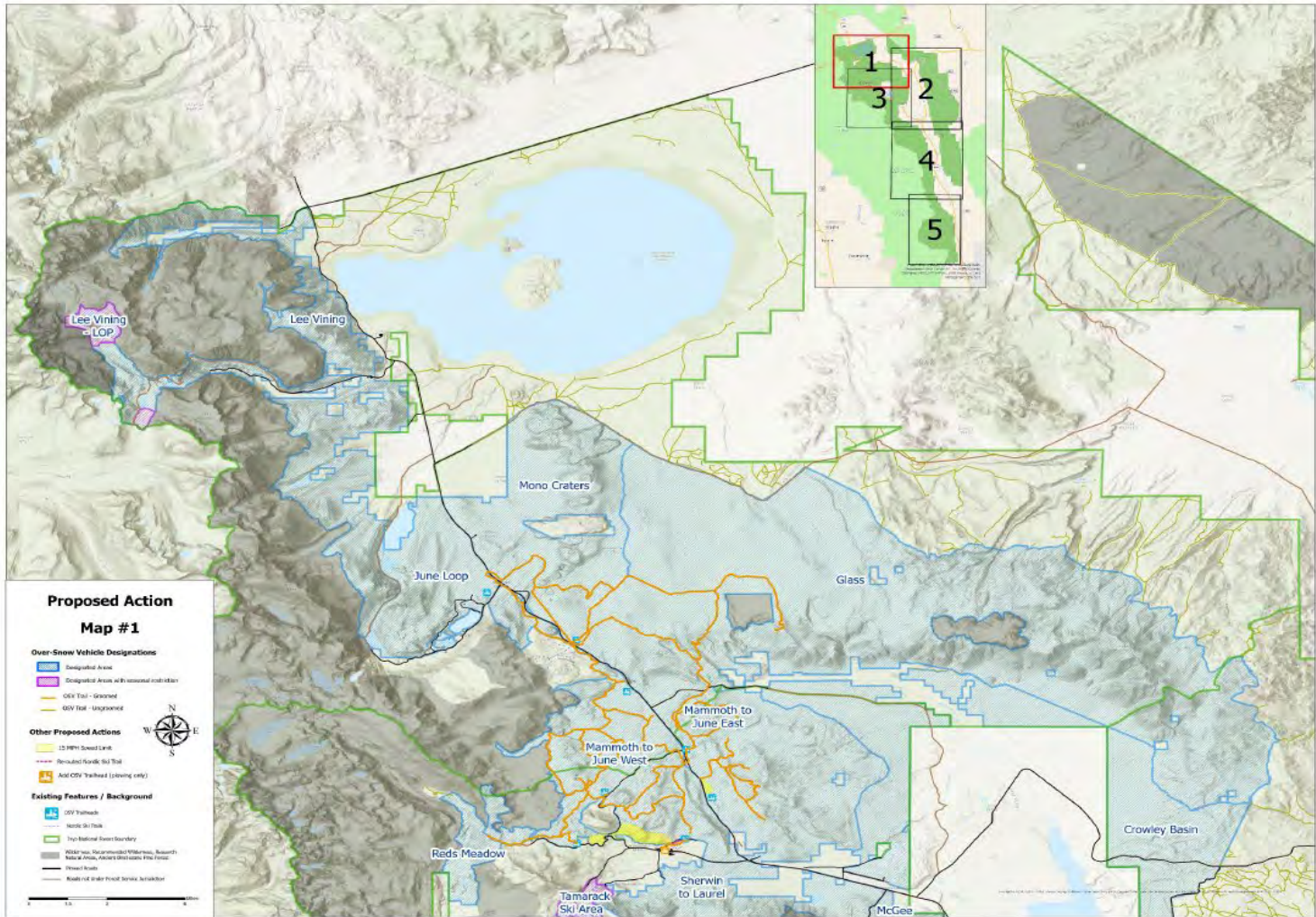
Public OSV use is prohibited in these areas from previous decisions, regulations or legislation. OSV designation was not reconsidered.

- Wilderness and Recommended Wilderness
- Research Natural Areas
- Developed downhill ski areas, including Mammoth Mountain and June Mountain
- Ancient Bristlecone Pine Forest (prohibited off roads only)

# PROPOSED ACTION

- Designate 16 areas covering about 305,000 acres, in areas that receive over 12 inches of snow, on average, over 5 days a year.
- Designate about 1,300 miles of OSV trails (ungroomed)
- Allow grooming on up to 107 miles of OSV trails.
- Implement a forestwide requirement for 12 inch snow depth for cross-country OSV travel.
- Implement management actions to minimize effects to resources.
- Perform activities in support of the OSV designations, including monitoring, patrolling, maintaining facilities, installing signs, etc.





**Proposed Action  
Map #1**

**Over-Snow Vehicle Designations**

- Designated Area
- Designated Area with seasonal modification
- OSV Trail - Gravel
- OSV Trail - Ungravel

**Other Proposed Actions**

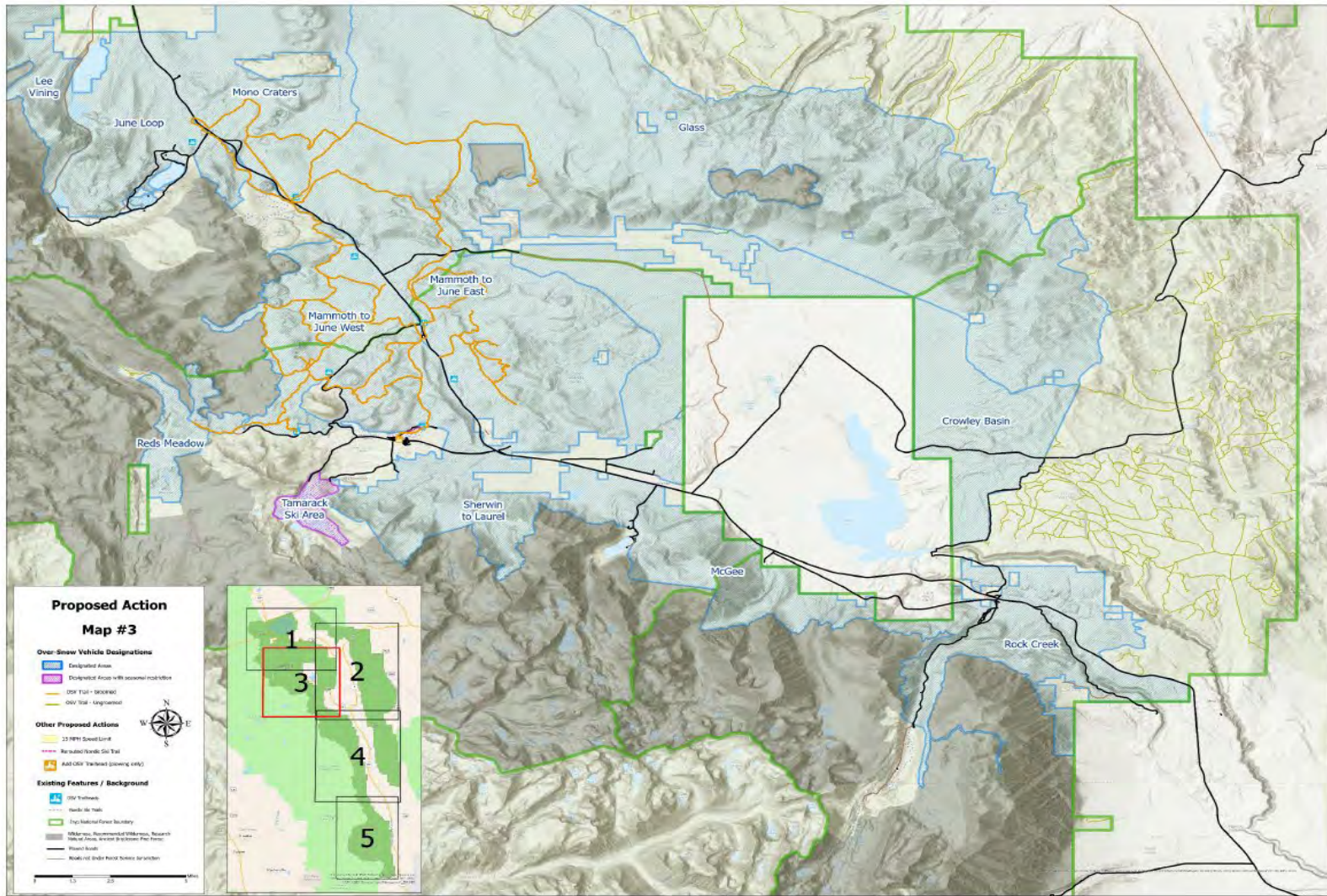
- 15 MPH Speed Limit
- Reouted Route, No Trail
- Add OSV Trailhead (existing only)

**Existing Features / Background**

- OSV Trailhead
- Nordic Ski Trail
- Trip National Forest Boundary
- Roadway, State-owned/Highway, Roadway, State or Private, Along/Adjacent to Roadway
- Street Road
- Road not under Private Service Jurisdiction







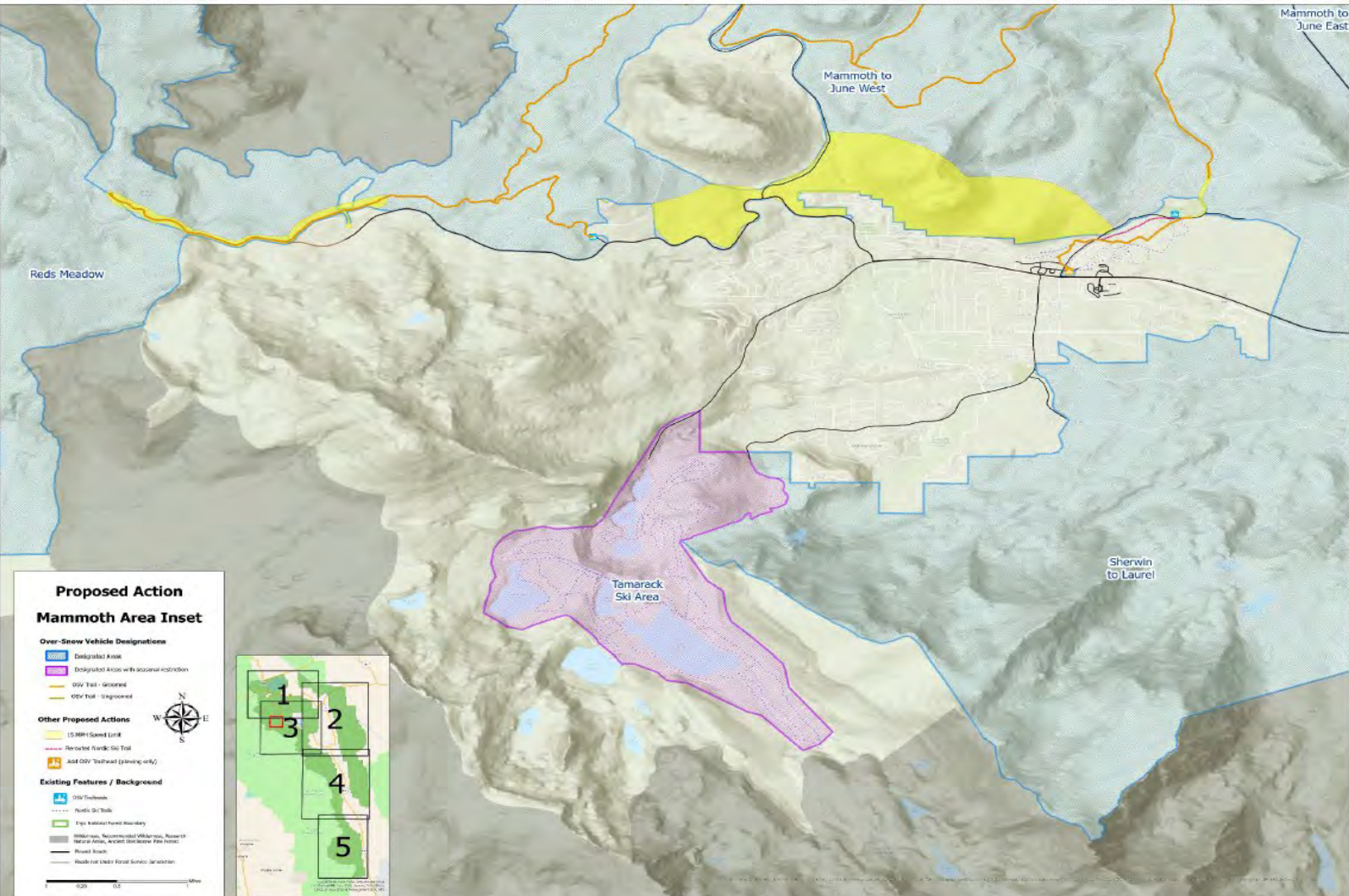
**Proposed Action  
Map #3**

- Over-Snow Vehicle Designations**
- Designated Area
  - Designated Areas with seasonal road closure
  - OSV Trail - Seasonal
  - OSV Trail - Unseasonal

- Other Proposed Actions**
- 22 MPH Speed Limit
  - Reopened/Revised Ski Trail
  - Add OSV Trailhead (power, water)

- Existing Features / Background**
- OSV Trailhead
  - Road-to-Road
  - Topographical Power Boundary
  - MMR Area, Recommended Wilderness, Research Natural Area, or Area of Biological Interest
  - Private Road
  - Road not Under Forest Service Jurisdiction





**Proposed Action  
Mammoth Area Inset**

- Over-Snow Vehicle Designations**
- Designated Route
  - Designated Area with seasonal restriction
  - OSV Trail - General
  - OSV Trail - Improved
- Other Proposed Actions**
- 15 MPH Speed Limit
  - Reversible Parallel Go Toll
  - Add OSV Trailhead (planning only)
- Existing Features / Background**
- OSV Trailheads
  - Public Ski Trails
  - E.g., National Forest Boundary
  - Wilderness, Recreationist Villages, Resort
  - Medical Area, Airport, and Other Air Service
  - Roadway
  - Roadside Under-Signage Location
- 0 0.25 0.5 Miles



# HOW DOES THIS PROPOSAL COMPARE TO EXISTING OSV MANAGEMENT?

---

- Generally the same as current management, with some exceptions.
  - Difficult to compare acreages since current management direction is only clear for the north part of the Forest.
    - Currently, about 400,000 acres open to OSV in areas that may receive adequate snowfall.
- 

# WHAT HAPPENED TO CURRENT OSV CLOSURES?

---

In the late 1990s and early 2000s, after public collaboration, some areas were closed to OSVs for the purpose of providing non-motorized recreation opportunities (mostly Nordic skiing) and reducing conflict. These areas include the Mammoth Lakes Basin, Obsidian Dome, Shady Rest Nordic Trails, and Rock Creek.

These closures remain in the proposed action, though some of the areas had boundary changes.



## *Trivia*

**Name one area where public OSV use is currently prohibited, and designation was not reconsidered for the Sub Part C process.**

**Answer: Wilderness and Recommended Wilderness, Research Natural Areas, developed downhill ski areas (June, MMSA) and the Ancient Bristlecone Pine Forest**

03

**HOW TO SUBMIT  
COMMENTS & TIMELINES**



# HOW TO VIEW PROJECT DOCUMENTS

---

Inyo National Forest Project website:

Inyo National Forest > Managing the Land > Projects > Inyo National Forest Over-Snow Vehicle (OSV) Use Designation > View Project


<https://www.fs.usda.gov/project/inyo/?project=61466>

Online interactive map at: <https://tinyurl.com/Inyo-OSV-Map>

# HOW TO COMMENT

Comments must be in writing

## Inyo National Forest Over-Snow Vehicle (OSV) Use Designation

 [Subscribe to this feed](#)

The Inyo National Forest is evaluating its management of over snow vehicle (OSV) use. The purpose of this project is to designate system roads, trails and areas where OSV use will be designated, in compliance with 36 CFR 212, Subpart C.

### Location Summary

The entire portion of the Inyo National Forest that has adequate snowfall, excluding areas where OSV use is prohibited by law. Interactive map at: <https://tinyurl.com/5d5ej3dv>

**District:** Inyo National Forest All Units

### Project Documents

Use the widget below to browse documents associated with this project. Cookies must be **enabled** to use this tool.

If you are using a mobile device, the setting for "Allow cross-website tracking" must also be **enabled** to view the documents. You do not need to sign up or login to Box to view documents, but if you have difficulty accessing the documents on a mobile device, you may choose to sign up for a free account, download the app to your device and log in to ensure that you can open the documents.

Alternatively, these documents can be accessed on the Pinyon Public website: [View Documents on Pinyon Public](#)



Log in

Sign up

Inyo National Forest Over-Snow Vehicle (OSV) Use Designation (61466)



### Project Navigation

[Project Overview](#)

[Project Detail](#)

[Project Location](#)

[Meeting Notices](#)

### Get Connected

[Request More Info](#)

[Comment/Object on Project](#)

[Public Comment/Objection Reading Room](#)

[Subscribe to Email Updates](#)

### Forest Links

[SOPA Reports](#)

[Objection Responses](#)

### NEPA Resources

[FS Environmental Management](#)



# HOW TO COMMENT?

---

We would like to know:

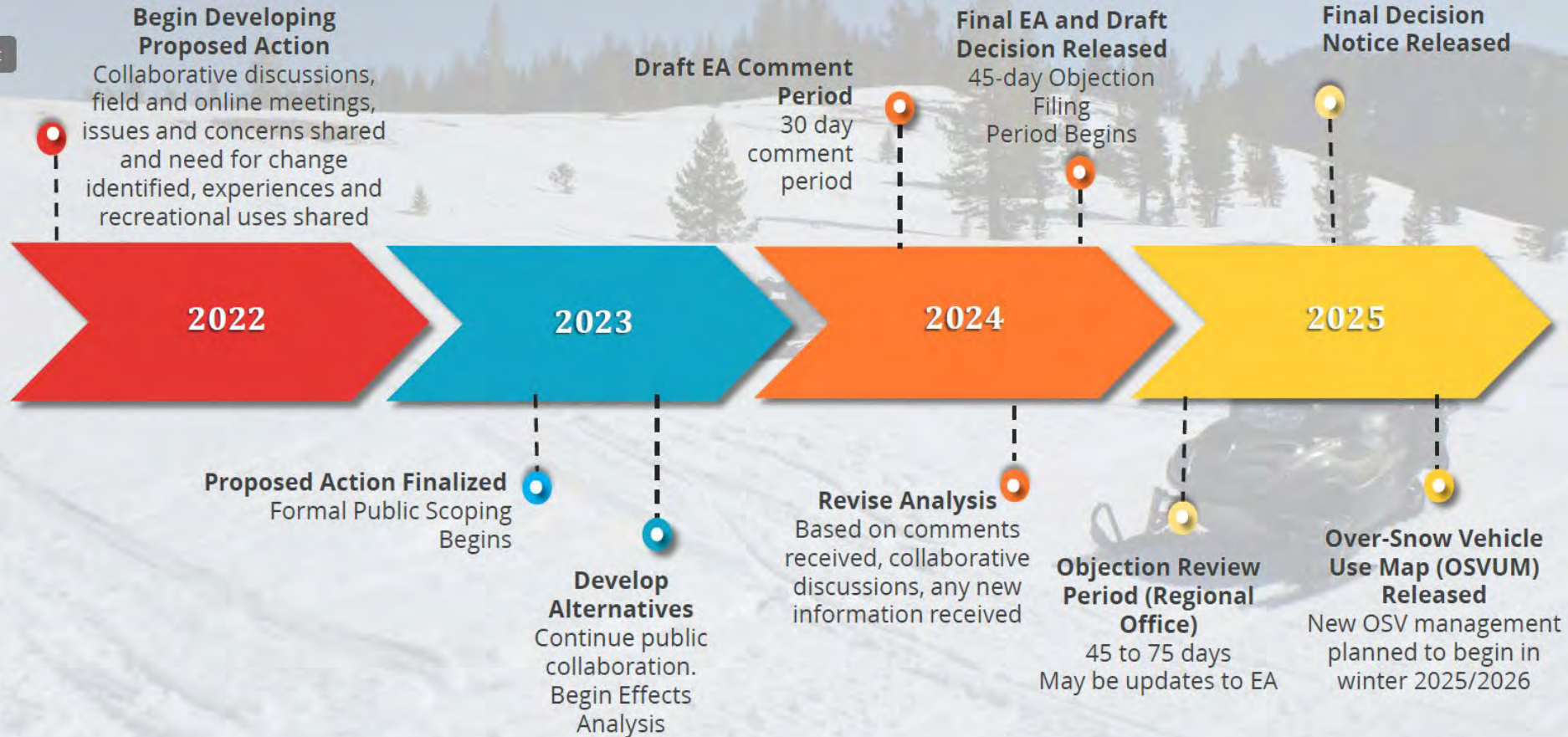
- What are your issues, concerns, ideas?
- Do you have suggested alternatives to this proposed action, either overall or at specific locations?
- What specific issues/resources would you like to see analyzed, and what kind of measures would you like displayed?
- Other comments specific to this OSV use designation project.

# HOW TO COMMENT SO YOUR CONCERNS CAN BEST INFORM THE PROJECT?

---

- Be as specific as possible. General position statements or statements on principle don't inform analysis, alternatives, or decisions as much as a concern over a specific effect of this proposed action, phrased as a cause-effect relationship to a specific resource.
- Specific comments are about a specific aspect of this proposal. Back up your statements with explanations, facts, and references, as appropriate.
- Support statements with details. For example, if you are concerned about biological resources, it is helpful to focus on a particular species, or a particular effect of OSV use in a specific area, instead of making a broad statement that we did not consider biological resources adequately.
- Point out any errors, new information, something that should be clarified, or a substantially different alternative that meets the purpose and need statement.
- Let us know if there are particular resources you would like to see analyzed, or specific methods you would like to see used for that analysis.

# What is the Expected Process and Timeline?



04

# MAMMOTH SPECIFIC INFORMATION





## WINTER NARRATIVE

Final Draft  
November 3, 2009

# DO ANY TOWN OR RECREATIONAL PLANNING DOCUMENTS REFERENCE OSV USE?

### **CONCEPT: Non-motorized stacked-loop trail system in the meadow**

Articulate a stacked-loop trail system from the borrow pit staging area (see Winter Map ID #1), along the base of the Sherwins to the Tamarack Street trailhead (see Winter Map ID #5c), and back to the borrow pit staging area. Facilities will include signage and some maintenance; a specific grooming program will be developed to provide a quality experience for multiple uses, which may include separate trails or delineation as appropriate. The westernmost loop is intended to be left ungroomed, while the section connecting the borrow pit staging area and the Tamarack Street trailhead is intended to be groomed. This system will be aligned, if possible, over the summertime system (see Summer Map ID #8) and will be open to non-motorized use only. This system will be contained within the developed recreation area described in Winter Map ID #18 and will provide connectivity to the Lakes Basin via the connector described in Winter Map ID #7.

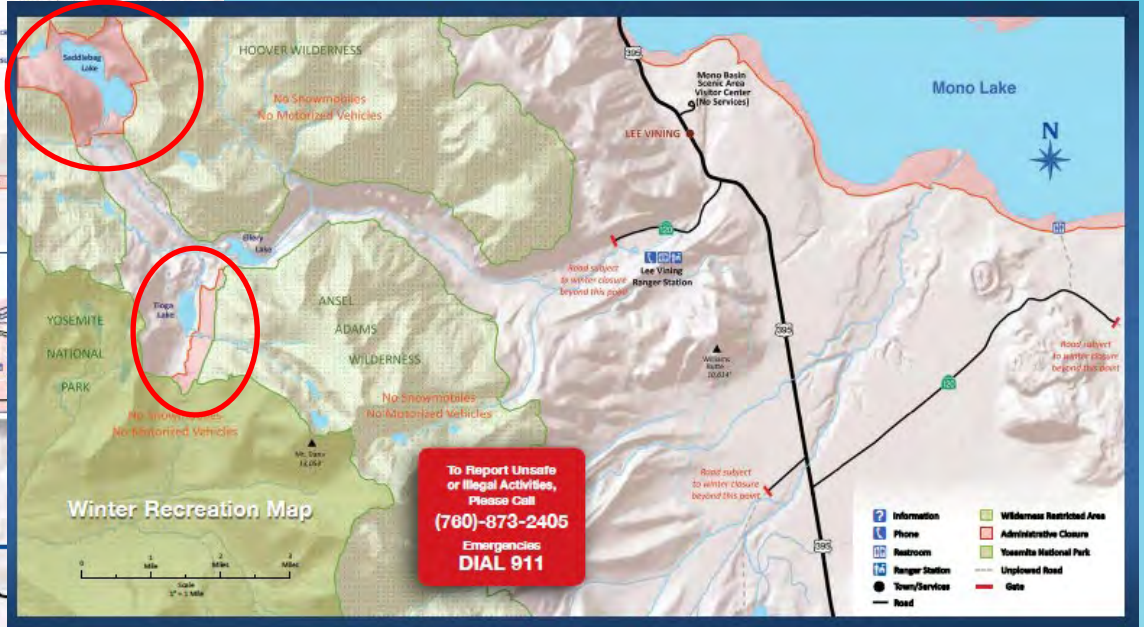
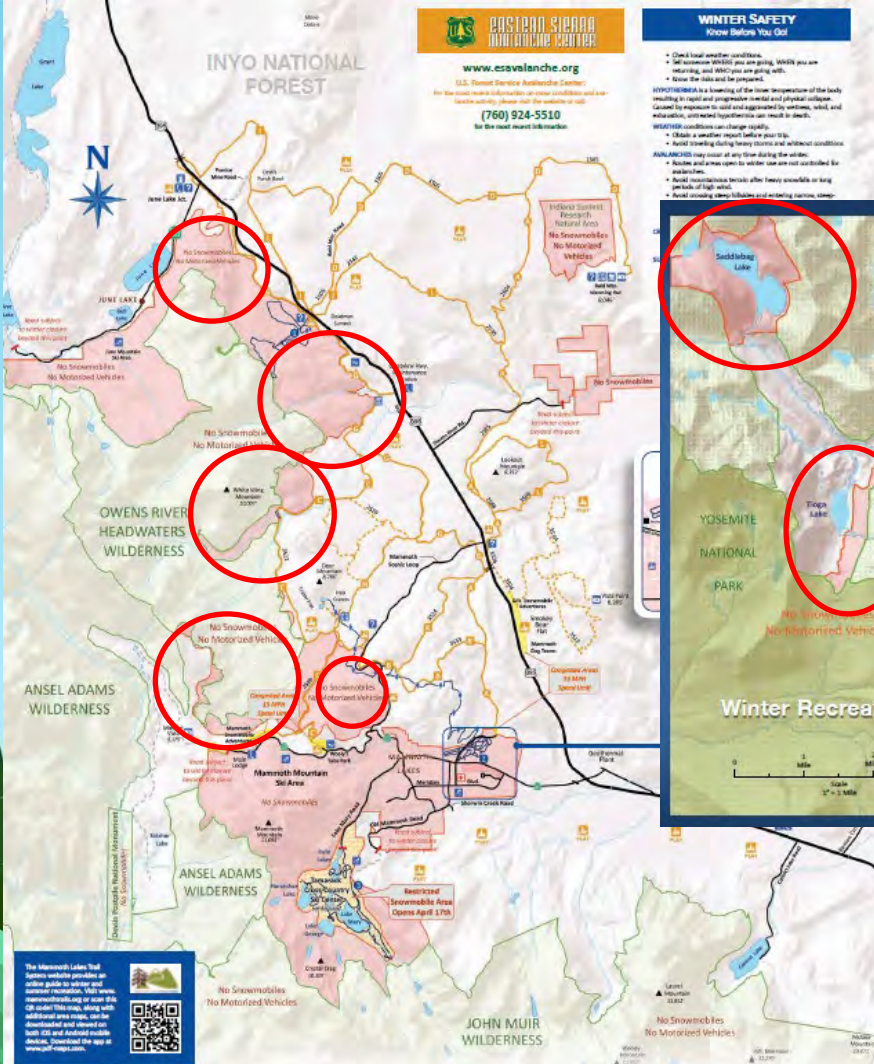
# WHAT'S DIFFERENT?



www.esavalanche.org  
 U.S. Forest Service Avalanche Center  
 For the best snow information on your conditions and snow levels, please call the number or visit the website.  
 (760) 924-5510  
 For the most recent information.

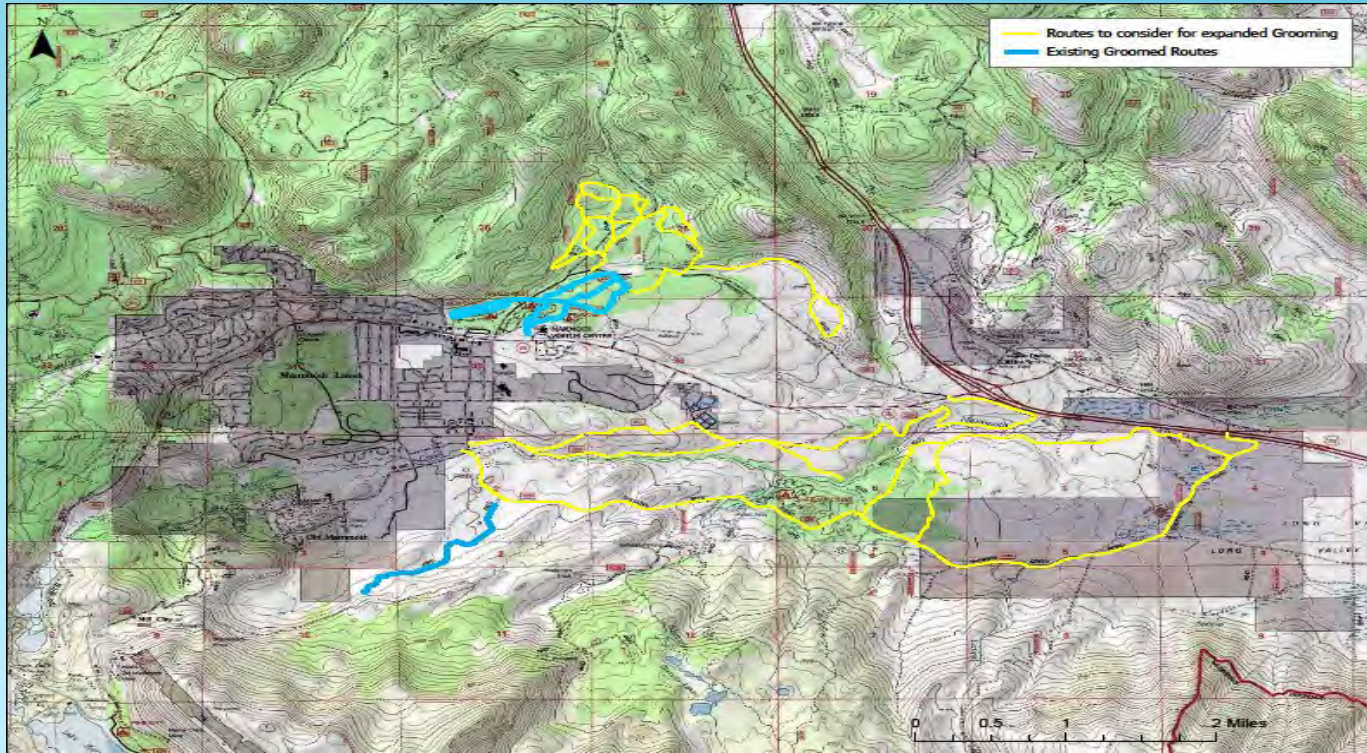
**WINTER RECREATION**  
 Know Before You Go!

- Check local weather conditions.
  - Tell someone WHERE you are going, WHAT you are wearing, and WHY you are going with.
  - Know the risks and be prepared.
- HYPOXEMIA** is a lowering of the lower temperature of the body resulting in rapid and progressive mental and physical collapse caused by exposure to cold and oxygenated by wetness, wind, and dehydration, only medical intervention can result in death.
- WINDCHILL** conditions can change rapidly.
- Obtain a smaller report before your trip.
  - Avoid standing along heavy storms and wet snow conditions.
- AVALANCHES** may occur at any time during the winter.
- Routes and areas open to winter use are not controlled by machines.
  - Avoid mountainous terrain after heavy snowfalls in long periods of high wind.
  - Avoid crossing steep hillsides and avoiding narrow, steep.



The Mammoth Lakes Trail System website provides an online guide to winter and summer recreation. Visit [www.mammothtrailsystem.com](http://www.mammothtrailsystem.com) or use the QR code to access, along with additional trail maps, can be downloaded and stored on both iOS and Android mobile devices. Download the app at [www.mammothtrailsystem.com](http://www.mammothtrailsystem.com).

# EXPANDED GROOMING PROPOSAL



# TRAILHEAD PROPOSAL





# OTHER ITEMS TO CONSIDER

- **HIGH ELEVATION STAGING AREA (CINDER SHED)?**
- **SCENIC LOOP STAGING AREA?**
- **OTHER LOCATIONS FOR DELINEATION OF USES?**
- **SHERWIN'S WORKING GROUP RECOMMENDATIONS?**
- **OTHER IDEAS OR RECOMMENDATIONS?**





# THANKS

Do you have any questions?

[lreif@townofmammothlakes.ca.gov](mailto:lreif@townofmammothlakes.ca.gov)

760-923-8247

*Trivia*

**How much does a limited-edition 10<sup>th</sup> anniversary MLTS T-shirt cost?**

**Answer: Only \$10**

MAMMOTH LAKES TRAIL SYSTEM

EST. 2012



**10<sup>th</sup> ANNIVERSARY**

★ 2012 – 2022 ★

**MAMMOTH TRAILS**

**RECREATION FOR ALL**