



**February 11, 2016, Mammoth Trails Committee Meeting Minutes
Mammoth Lakes Tourism and Recreation Conference Room,
2520 Main St, Mammoth Lakes, CA 93546**

ROLL CALL

President Stroud called the meeting to order at 3:24 p.m. at the Mammoth Lakes Tourism and Recreation Conference Room, 2520 Main St, Mammoth Lakes, CA 93546. Present: Danna Stroud, David Page, Dan Holler

PUBLIC COMMENT

Guests introduced themselves, the group included: Casey from Friends of the Inyo, Jenny from Mono County Visitor Center, Kelly Workman from MLTPA, Jonathan Soba from Mammoth Lakes Welcome Center, Kim from MLTPA and John Wentworth from MLTPA.

ADMINISTRATIVE ITEMS

1. No changes made to the current agenda.
2. Minutes tabled until we have a quorum.
3. Half day budget meeting scheduling tabled until next MTC meeting.
4. Signage and Wayfinding presentation was made by Kelly Workman.
(David Page joined the meeting at 3:32 p.m.)
The Committee asked questions about the three options for sign 9a. The Committee agreed that if a QR-code is placed on the sign that they should be on the sides with the MLTS logo on the front and back of the posts. The public also asked questions about the sign options. The Committee agreed that #2 was the preferred choice.
5. Trail Days and Lakes Basin Stewards Budget and Program: Joel Rathje gave a review of the proposal to go from six trails days to three, and removing the interpretative program as a separate line item for the 2016/17 budget. The configuration of the program is changing due to the maintenance program that will be occurring this summer. Casey from Friends of the Inyo said that he supported the idea of separating the programs, and only having three trail days in the season. A motion to approve to change the Trail Days to three days for next season (M Holler, S Page, 3-0). A motion to approve a Mammoth Lakes interpretative program that is separate from maintenance (M Holler, S Page, 3-0).
6. Signage and Wayfinding, Map Updates and Repair: Joel Rathje updated the committee on what is being done to establish and maintain signs and that he has been discussing the standards and the process occurring with TOML Public Works. A question was asked about the college connector signs, with a request to see if those could possibly be in place by the end of spring.
7. ABSS- Trail Alignment Studies: Rathje provided an update about opportunities the trail system may have during the winter months, and the types of discussions that need to be had, for instance, the use of the MUP by the public during the winter.
8. Minutes approved (M Page, S Stroud, 3-0).



**February 11, 2016, Mammoth Trails Committee Meeting Minutes
Mammoth Lakes Tourism and Recreation Conference Room,
2520 Main St, Mammoth Lakes, CA 93546**

COMMITTEE REPORTS

- David Page asked if there is a place on the website to display Trail Construction updates during the summer while it is occurring.
- Danna Stroud gave an update on the Winter Recreation Summit. Press release has gone out, ad in the Mammoth Times, the tracks that are occurring.

REQUEST FOR FUTURE AGENDA ITEMS

- Discussion about Winter Recreation Summit
- Budget
- Adopt-A-Trail

ADJOURNMENT

There being no further business to come before the Mammoth Trails Committee, the meeting was adjourned at 4:46 p.m.

Respectfully submitted,

Lesley-Anne Hoxie
Executive Assistant
Mammoth Lakes Recreation



Mammoth Lakes Trails System: Trail Patrol, Adopt A Trail, & Adopt A Lake Program

“Beautiful places cast reflections of beautiful people”

DRAFT - Program Proposal

March 01, 2016



Table of Contents

Program Staff Report.....	1
AAT & AAL Program Structure.....	2
MLTS Trail Patrol Program Structure.....	5
Permit Structure.....	6
Leadership & Financial Structure.....	7
References.....	8
Appendix A: Trail, Lake, & MUP Anticipated Revenue.....	9

Program Staff Report

Goals:

- 1) Establish and maintain volunteer programs that deliver a level of service distinguishing Mammoth Lakes as a world-class recreation destination.
- 2) Foster community and comradery amongst all user groups, visitors, locals, businesses, local non-profits, and clubs.
- 3) Ensure that future generations enjoy a clean and well-maintained Mammoth Lakes Trail System (MLTS) for years to come.
- 4) Promote stewardship and instill a sense of pride and connection to the landscape for all volunteers and participants in the programs.

Objectives:

- 1) Trails and lakes within the MLTS will be adopted by local organizations, groups, and/or families who will perform trash and litter pick-up and light trail maintenance tasks as assigned by the "Trail Patrol, Adopt A Trail, & Adopt A Lake" program.
- 2) Create a financially self-sustaining "Trail Patrol, Adopt A Trail, & Adopt A Lake" program to leverage and complement Measure R resources and the MLTS maintenance program.

Trail System Master Plan Citation and Rationale:

Rationale for the "Trail Patrol, Adopt A Trail, & Adopt A Lake" program is drawn from TSMP citation and recommendation E6: "Establish a Trail Patrol" from the Town of Mammoth Lakes Trail System Master Plan (TSMP)

"Recommendation E6: Establish a Trail Patrol: Mammoth Lakes can establish a volunteer-based trail patrol through MLTPA, the Mammoth Snowmobile Association, Mammoth Nordic, or other local organizations to supplement official law enforcement and maintenance efforts. IMBA provides training for both law enforcement officers and volunteers to use mountain bikes for these activities. Patrol services can range from general public assistance to trained backcountry search and rescue operations. Mammoth Lakes could also reactivate the existing "Adopt-a-Trail" program for paved paths and Nordic trails for litter control and limited light maintenance purposes" (TSMP, p. 155).

Project Proposal

Program Structure

1) What is the “Trail Patrol, Adopt A Trail, & Adopt A Lake” program?

- **“Trail Patrol”**
 - Ideally a team of two or more volunteers who act as the eyes and ears of the Trail Coordinator and represent the Mammoth Lakes Trail System (MLTS) to the public. A Trail Patrol volunteer may be a local volunteer or an Americorps or Student Conservation Association member. The Trail Patrol team will be advocates for the “Bear Aware” campaign, educating the public with appropriate techniques to discourage human-bear interaction and what to do when human-bear interactions do occur. They will not act as a “Trail Cop” or perform maintenance duties.
- **“Adopt A Trail”**
 - Potential adoptees will perform tasks along a MLTS trail to include litter and dog nuisance removal, surface beautification and raking of loose rock and debris. They will also communicate to the Trails Coordinator any maintenance issues and general condition of the trail. They will not act as a “Trail Cop” or perform maintenance duties.
- **“Adopt A Lake”**
 - The potential adoptee will maintain the shoreline of a lake within the MLTS by removing litter, fishing line, and other debris. They will also communicate to Trails Coordinator any maintenance or environmental concerns around lake. The potential adoptee will not remove items from the lake bed, act as a “Trail Cop”, or perform maintenance duties.

2) Who can adopt a trail, MUP, lake, or be a member of the MLTS Trail Patrol?

The MLTS “Trail Patrol, Adopt A Trail, & Adopt A Lake” program is open to all, including: businesses, organizations, private clubs, groups, and individuals. The “adoption” is renewed annually and multi-year commitments are encouraged.

3) What will be “Adopted”?

The potential adoptee will be given a document showing the available MLTS trails, lakes and Multiple Use Paths (MUP) available for adoption. The group will choose an option, whether it is a trail, section of trail, MUP or lake. A minimum of three stewardship days is required of the potential adoptee.

4) What is the monetary amount needed to Adopt A Trail or Adopt A Lake?

Each potential adoptee will make a \$1,500 donation to adopt a trail, section of trail, MUP or lake for one year. In the event that the potential adoptee does not wish to perform the required stewardship days, an additional \$1000.00 will be donated and MLTPA will source and provide the crew and supplies for the stewardship days. Recognition will be given to all donors.

5) What will a potential adoptee receive for their efforts?

Each potential adoptee will receive recognition on the MLTS web-site, which receives over 300,000 page views annually. In addition, each potential adoptee will receive a plaque to display at their place of business, a plaque on MLTS Type 2 signs, and an MLTS t-shirt for each volunteer.

6) What duties will the potential adoptee perform?

As a potential adoptee, you are required to schedule three stewardship days. A potential adoptee can opt out of hosting the stewardship days by donating an additional \$1,000 dollars and MLTPA will source and provide the crew and supplies for the stewardship days. Those who do not opt out as part of the initial “adoption” paperwork the potential adoptee will be required to fill out estimated completion dates for the stewardship days and coordinate with the MLTS staff person on scheduling and progress. A progress report will be submitted to MLTS staff after each stewardship day is completed. The potential adoptee will have the option to opt out of stewardship days at any point in the “adoption” term and donate the prorated amount to complete have the MLTPA source and provide the crew and supplies for the remaining stewardship days. The prorated amounts are: 0 days completed=\$1,000, 1 day completed \$675, 2 days completed \$350.

During each of these stewardship days, your groups’ efforts should focus on the following:

MUPS:

Litter patrol, sweep MUPs, surface beautification, dog nuisance removal, report any damaged signs/maintenance issues, complete trail reports, and serve as a public liaison.

Lakes:

Litter Patrol, dog nuisance removal, report any damaged signs/maintenance issues, complete trail reports, and serve as a public liaison.

Trails:

Litter patrol, rake loose rocks, surface beautification, dog nuisance removal, report any damaged signs/maintenance issues, complete trail reports, and serve as a public liaison.

Each of these duties is defined further in the Volunteer Handbook. Additionally, each adoption season the MLTS will provide volunteer training for trail, MUP, or lake adoptees.

7) What duties are potential adoptees NOT expected to perform?

The potential adoptees are NOT to engage in any acts of regulatory enforcement. Notify the group leader of any incidents who will then communicate with MLTS Staff.

8) How can I adopt a trail, MUP, or lake?

The sign up process to adopt a trail, MUP, or lake is simple. Log onto the MLTS website at mammothtrails.org and fill out the “Adopt A Trail, MUP, or Lake” online application form. Once you have officially “adopted” the trail, MUP, or lake MLTS staff will email the group leader the application forms and waivers to be completed by each participating group member.

After the basic application process is completed, the fun part begins! Trail work days will be coordinated by the adopting party, unless otherwise specified. The group leader will communicate with the MLTS staff throughout “adoption” period to ensure all timesheets, maintenance report forms, and trail condition reports are completed.

MLTS Trail Patrol Program Structure

Option #1: SCA Conservation Interns

- 1) Timeframe:
 - a) As short as 12 weeks and as long as a year. Most interns are undergraduates or graduate students.
- 2) SCA Provided Services:
 - a) SCA recruits and screens applicants based on your preferred skills and education backgrounds.
 - b) MLTS will interview recommended candidates, select the candidates, and notify them.
 - c) SCA will finalize all the details, including travel arrangements, insurance enrollment and other admin tasks.
 - d) MLTS will supervise and train the intern.
- 3) SCA Benefits:
 - a) Living subsistence of \$75-\$160 a week, depending on length of internship.
 - b) Travel allowance to cover round-trip to and from the site,
 - c) AmeriCorps Education Award of up to \$5,730 as available, at no cost to the MLTS.
 - d) Liability and 24-hour accident insurance coverage.
 - e) Long-term AmeriCorps eligible interns are also offered full health insurance.

Option #2: Partnership with USFS for Trail Patrol Interns

- 1) Partner with the USFS
 - a) Sierra Buttes runs a student trail crew in cooperation with the USDA Forest Service
 - b) Potentially a shared intern that can work for both organizations
 - i) Ex: USFS Bear Patrol Program and MLTS Trail Patrol
 - c) USFS is responsible for:
 - i) Training
 - ii) Housing from the USFS
 - iii) Workers Comp
 - d) MLTS is responsible for:
 - i) MLTS can set up the application process on the website.
 - ii) Pick out candidates to be interviewed jointly.
 - iii) Primary supervisor
 - iv) MLTS related training

Option #3: MLTS Funded Trail Patrol Interns

- 1) Partner with the local high school/community college to fill positions
- 2) MLTS is responsible for:
 - a) Application process
 - b) Hiring Process
 - c) Training
 - d) Supervision
 - e) Insurance/Compensation

Permit Structure

Option #1: Challenge Cost Share Agreement (with Clause G)

- 1) USFS preferred for good longstanding partners (up to 5 years)
 - a) Clause G (optional clause) can be included or excluded:

“NON-FEDERAL STATUS FOR COOPERATOR PARTICIPANT LIABILITY.

_____ agree(s) that any of their employees, volunteers, and program participants shall not be deemed to be Federal employees for any purposes including Chapter 171 of Title 28, United States Code (Federal Tort Claims Act) and Chapter 81 of Title 5, United States Code (OWCP), as _____ hereby willingly agree(s) to assume these responsibilities.

Further, _____ shall provide any necessary training to _____’s employees, volunteers, and program participants to ensure that such personnel are capable of performing tasks to be completed. _____ shall also supervise and direct the work of its employees, volunteers, and participants performing under this agreement.”

- b) If Clause G is included it states that employees, volunteers, and program participants are not deemed to be Federal employees for liability purposes. Volunteers are considered contractors.
 - (1) The USFS will not provide workers compensation for volunteers.
 - (2) Volunteers are not subject to USFS training standards and certifications.
- c) The MLTS Trail Patrol Program will be a TOML program. If Clause G is used in the permit then the TOML waiver and liability insurance will cover works compensation.

Option #2: Challenge Cost Share Agreement (without Clause G)

- 1) If Clause G is not used:
 - a) USFS covers workman’s compensation
 - i) The USFS treats volunteers under this permit as employees and are required to follow the same standards as employees for training, PPE and other safety requirements.

Option #3: USFS Volunteer Agreement

- 1) FS 1800-8 form: for sponsored of group voluntary service.
 - a) A contract with the USFS to accept services and work
 - b) Documented as a group under the name of their sponsor organization on the sponsored volunteer agreement.
 - c) Volunteers are subject to USFS guidelines and regulations
 - d) Training/Supervision
 - e) USFS covers workman’s compensation

Leadership Structure

The Trails Coordinator will be the lead on this program, and an MLTS staff person will be assigned as an intermediary between the coordinator and the trail, MUP, or lake adopters.

- 1) **Trails Coordinator:** The Trails Coordinator is the lead on the Trail Patrol program and is charged with overseeing and managing the program. The Coordinator will have the final decision or solution for any needs, issues or concerns communicated from the Group Leader to the MLTS Staff person.
- 2) **MLTS Staff:** The MLTS staff person is responsible for making sure that all the appropriate documents are completed by the adopting party (adoption financial paper work, application, waivers for all group members, etc.) and filed in the appropriate folder. The MLTS staff person is the intermediary between the Trails Coordinator and the Group Leader of the adopting party. Any needs, issues, or concerns will be relayed to the trails coordinator and the trails coordinator will advise the appropriate action or solution.
- 3) **Group Leader:** Each adopting organization, group, family, or individual will designate a group leader that will be responsible for organizing the group's clean up days, ensuring all paper work and trail reports are completed and turned in to the MLTS staff person. Additionally, the group leader will communicate with the MLTS staff person about any needs, issues, or concerns related to their adopted trail.
- 4) **Volunteers:** Volunteers complete trail day tasks outlined in the Volunteer Handbook and communicate all needs, issues, and concerns to the Group Leader.

Financial Structure

The MLTPA will manage, budget, and create a hierarchy of spending priorities to ensure that the "Trail Patrol, Adopt A Trail, & Adopt A Lake Program" becomes a self-sustaining program. As a contractor to the TOML, the MLTPA will be charged with managing the donated funds. All funds donated will be reinvested into the maintenance of the MLTS trail system.

References

Bay Area Ridge Trail Council. (2014). Bay Ridge Trail: Adopt-A-Trail. Retrieved from: <http://www.ridgetrail.org/component/content/article?id=241&Itemid=57>

Big Bear Valley Trails Foundation. (2012). Big Bear Valley Trails Foundation: Adopt A Trail. Retrieved from: <http://trailsfoundation.org/adopt-a-trail/>

Friends of the Tonto National Forest. (2016). Tonto National Forest-Volunteers: Adopt-A-Trail. Retrieved from: <http://www.friendsofthetonto.org/adopt-a-trail.html>

The City of Glendale. (2016). City of Glendale's Trails and Open Space Program. Retrieved from: <http://www.glendaleca.gov/government/city-departments/community-services-parks/trails-and-open-space>

The City of Bloomington, Indiana. (2016). "The City of Bloomington Adopt-a-Trail: Submit an Adopt-a-Trail application. Retrieved from: <https://docs.google.com/forms/d/1VCho0SdOqwND1xOvB7KD6ANCsDSSAeQvqDvgKqpiq7E/viewform>

The Sierra Buttes Trail Stewardship. (2016). Adopt A Trail Program. Retrieved from: <http://sierratrails.org/projects/adopt-trail>

The Student Conservation Association. (2016). Why the SCA? The Solution Menu. Retrieved from: <http://www.thesca.org/partner/sca-solution-menu>

Town of Mammoth Lakes and Contractors. (2011). Town of Mammoth Lakes Trail System Master Plan. Retrieved from: http://mltpa.org/images/downloads/060_TSMP_ADOPTED_111103_with_maps_print_FINAL.pdf

United States Forest Service. (2016). Partnership Resource Center. Retrieved from: <http://www.fs.usda.gov/prc>

United States Forest Service. (2016). Sierra National Forest Adopt-A-Trails Program. Retrieved from: <http://www.fs.usda.gov/detailfull/sierra/recreation/?cid=stelprd3837405&width=full>

United States Forest Service. (2009). Welcome to the Forest Service: A guide for Volunteers. Retrieved from: <http://www.fs.fed.us/t-d/pubs/pdfpubs/pdf09672813/pdf09672813dpi72.pdf>

Appendix A

MLTS AAT + AAL Totals

	AAT/AAL Program	Anticipated Revenue	Anticipated Revenue (w/no work)
1	AAT: Summer Trails	\$34,500.00	\$57,500.00
2	AAT: MUPs	\$15,000.00	\$25,000.00
3	AAT: Winter Trails	\$30,000.00	\$50,000.00
4	AAL: Lakes	\$13,500.00	\$22,500.00
	Total	\$93,000.00	\$155,000.00

MLTS Adopt A Lake: Lakes

	Lake	Anticipated Revenue	Anticipated Revenue (w/no work)
1	Lower Twin Lake	\$1,500.00	\$2,500.00
2	Lake Mary	\$1,500.00	\$2,500.00
3	Lake George	\$1,500.00	\$2,500.00
4	Lake Mamie	\$1,500.00	\$2,500.00
5	Horseshoe Lake	\$1,500.00	\$2,500.00
6	McLeod	\$1,500.00	\$2,500.00
7	Crystal Lake	\$1,500.00	\$2,500.00
8	Hidden Lake	\$1,500.00	\$2,500.00
9	Laruel Lakes	\$1,500.00	\$2,500.00
		\$13,500.00	\$22,500.00

MLTS Adopt A Trail: Trails

	Trail	Total Length (o/w)	Anticipated Revenue	Anticipated Revenue (w/no work)
1	Coldwater-George Trail	2.9	\$1,500.00	\$2,500.00
2	Crystal Lake Trail	0.3	\$1,500.00	\$2,500.00
3	Downtown Mountain Bike Trail	1.6	\$1,500.00	\$2,500.00
4	Dragon's Back Trail (part)	3	\$1,500.00	\$2,500.00
5	Duck Pass Trail (part)	?	\$1,500.00	\$2,500.00
6	Earthquake Fault Trail	0.2	\$1,500.00	\$2,500.00
7	Heart Lake	1.1	\$1,500.00	\$2,500.00
8	Horseshoe Lake Loop Trail	1.7	\$1,500.00	\$2,500.00
9	Mammoth Consolidated Mine Spur	?	\$1,500.00	\$2,500.00
10	Mammoth Crest Trail (part)	?	\$1,500.00	\$2,500.00
11	Mammoth Mountain Pass Trail	1.1	\$1,500.00	\$2,500.00
12	Mammoth Pass Trail (part)	?	\$1,500.00	\$2,500.00
13	Mammoth Pass/Crater Meadow Trail (part)	?	\$1,500.00	\$2,500.00
14	Mammoth Rock Trail	2.6	\$1,500.00	\$2,500.00
15	McLeod Lake Spur	0.4	\$1,500.00	\$2,500.00
16	Minaret Vista Loop	0.2	\$1,500.00	\$2,500.00
17	Minaret Vista Trail	1.2	\$1,500.00	\$2,500.00
18	Mountain View Trail	0.9	\$1,500.00	\$2,500.00
19	Panorama Dome Trail	0.3	\$1,500.00	\$2,500.00
20	Panorama Dome MTB/Loop	0.6	\$1,500.00	\$2,500.00
21	Seven Lakes Point Loop	0.3	\$1,500.00	\$2,500.00
22	TJ Lake Loop	1.4	\$1,500.00	\$2,500.00
23	Uptown Mountain Bike Trail	?	\$1,500.00	\$2,500.00
			\$34,500.00	\$57,500.00

Indicates a wilderness trail

MLTS Adopt A Trail: MUPs

	Trail	Total Length (o/w)	Anticipated Revenue	Anticipated Revenue (w/no work)
1	College Connector Path	0.7	\$1,500.00	\$2,500.00
2	Lake Front Path	0.3	\$1,500.00	\$2,500.00
3	Lakes Basin Path	5.3	\$1,500.00	\$2,500.00
4	Lodestar Connector	0.5	\$1,500.00	\$2,500.00
5	Main Street Connector	0.4	\$1,500.00	\$2,500.00
6	Meridian Connector	1	\$1,500.00	\$2,500.00
7	North Waterford Connector	0.4	\$1,500.00	\$2,500.00
8	Shady Rest Path	0.8	\$1,500.00	\$2,500.00
9	Sierra Park Connector	0.3	\$1,500.00	\$2,500.00
10	Town Loop	7.3	\$1,500.00	\$2,500.00
			\$15,000.00	\$25,000.00

MLTS Adopt A Trail: Winter Trails

	Trail	Total Length (o/w)	Anticipated Revenue	Anticipated Revenue (w/no work)
1	A -Trail	3.7	\$1,500.00	\$2,500.00
2	B -Trail	6	\$1,500.00	\$2,500.00
3	C -Trail	3.5	\$1,500.00	\$2,500.00
4	D -Trail	11	\$1,500.00	\$2,500.00
5	F -Trail	2.3	\$1,500.00	\$2,500.00
6	G -Trail	20	\$1,500.00	\$2,500.00
7	H -Trail	4.3	\$1,500.00	\$2,500.00
8	I - Trail	11.5	\$1,500.00	\$2,500.00
9	K - Trail	2.5	\$1,500.00	\$2,500.00
10	L - Trail	3.2	\$1,500.00	\$2,500.00
11	Obsidian Dome Blue Diamond Route Loop A	0.65	\$1,500.00	\$2,500.00
12	Obsidian Dome Blue Diamond Route Loop B	1.4	\$1,500.00	\$2,500.00
13	New Shady Loop on the Mammoth Lakes Nordic Trail System	1.8	\$1,500.00	\$2,500.00
14	Old Shady Loop on the Mammoth Lakes Nordic Trail System	1.1	\$1,500.00	\$2,500.00
15	Pine Cone Cutoff on the Mammoth Lakes Nordic Trail System	0.5	\$1,500.00	\$2,500.00
16	Connector Blue Diamond Route	1.3	\$1,500.00	\$2,500.00
17	Earthquake Fault Blue Diamond Route	4.7	\$1,500.00	\$2,500.00
18	Inyo Craters Blue Diamond Route	1.3	\$1,500.00	\$2,500.00
19	Knolls Blue Diamond Route	5	\$1,500.00	\$2,500.00
20	Lakes Basin Public Access Corridor	?	\$1,500.00	\$2,500.00
			\$30,000.00	\$50,000.00



Sherwins Egress Handbook

Draft – March 01, 2016



Table of Contents

Purpose of the Program.....	3
Messaging Protocol.....	3
Installation and Maintenance	4
Partner Coordination.....	5
Public Outreach.....	5
Appendices.....	6

Production of this document was funded by Measure R, a local sales-tax measure for the specific benefit of trails, parks, and recreation in Mammoth Lakes, and was produced by the Mammoth Lakes Trails and Public Access Foundation (MLTPA), a 501(c)(3) non-profit organization, under contract to the Town of Mammoth Lakes.



Purpose of the Program

During the winter of 2005–2006, conflicts between local backcountry skiers and snowboarders, homeowners, and private-property interests threatened to permanently close the safest and most convenient winter egress route from the base of the Sherwin Range to the Town of Mammoth Lakes. Today, thanks to a partnership between Snowcreek Investment Company L.P. (developer of Snowcreek VIII), the Town of Mammoth Lakes (TOML), and the Mammoth Lakes Trails and Public Access Foundation (MLTPA), an approved, legal route leading outdoor recreationists home from the base of this well-loved frontcountry ski amenity has been secured and marked with directional signage. The Ranch Road Egress Route is the result of a two-year decision-making process and is formalized as a component of the adopted Snowcreek VIII Master Development Plan and the Town of Mammoth Lakes Trail System Master Plan as adopted in October 2011.

In January 2016, the Sherwins Egress Signage Program was initiated to install new winter only signs at three popular backcountry access points to complement the Ranch Road Egress Route. The first sign was installed at the Borrow Pit, located south of Town next to the propane tank farm off of Sherwin Creek Road. The second sign was installed at Mill City, located at the winter road closure at the southern end of Old Mammoth Road. The third sign was installed at the boot pack trail off of the Public Access Corridor on Lake Mary Road.

These winter access points serve as gateways for front and backcountry users alike, including opportunities for a wide variety of winter fun. Temporary winter signage available at the Borrow Pit, Mill City, & the Sherwins Winter Access provides orientation information and winter recreation safety tips. These temporary signs also remind backcountry users to follow the “egress only” route across the Snowcreek Golf Course to complete their Sherwins adventures in order to respect private property rights and preserve the right to continue to use this route in the future.

To protect, maintain, and enhance the Sherwins Egress Program, this handbook was produced by MLTPA, under contract with the TOML, for the benefit of the partners in the Mammoth Lakes Trail System (MLTS) as well as for the general public. The TOML is responsible for the maintenance, publication, and distribution of the Sherwins Egress Program Handbook.

Messaging Protocol:

The following represents the messaging protocol for updating and creating new Sherwins Egress signage.

- 1) The **Primary I.D.** must follow TSMP “Naming Conventions.”
- 2) The **Primary I.D. Clarifier** must follow TSMP “Naming Conventions.”
- 3) **Recreation symbols:** identify legal recreation activities in the area of the sign.
- 4) Inclusion of a **Winter Recreation Safety Message.**
- 5) Inclusion of a **Ranch Road Egress user ethics message** for backcountry skiers and riders.

Installation and Maintenance

The following represents an inventory of the Sherwins Egress Program infrastructure, as well as the installation and maintenance procedures for providing outdoor recreationists with the necessary signage and wayfinding information to follow the approved, legal route.

The Sherwins Egress Program infrastructure for winter 2015-2016 consists of the following signs:

- 1) Four (4) signs, property of Snowcreek Investment Company L.P., located on the Snowcreek Golf Course along the specified Ranch Road Egress route.
- 2) Three (3) signs, 49" by 57", wooden sled-shaped structures with a basket-like base allowing structures to be filled in with snow or sandbags, seasonally located at: the Borrow Pit off of Sherwin Creek Road, the Mill City access at the winter closure of Old Mammoth Road and the Sherwins Winter Access sign installed near the boot pack trail off of the Public Access Corridor on Lake Mary Road.

The installation date for the seasonal signs is dependent upon snowpack, but the program has maintained a general date of November 1 for installation and sometime in April for removal. The program manager shall coordinate with Snowcreek's property manager to verify the date and location of Snowcreek's signs (#1, above). The installation of the other three signs (#2, #3, & #4 above) will be coordinated Public Works and the Tamarack Cross-Country Ski Center.

Maintenance shall be provided to the installed signs on an as-needed basis, but the recommended schedule should include checking on the signs after any significant weather events and/or during times of high recreationist visitation (holidays, big snowfalls, etc.). The signs installed at the Borrow Pit, Mill City, and the Sherwins Winter Access, at the boot pack trail off of the Public Access Corridor on Lake Mary Road, will need to be checked after significant weather. If the snow level has risen after a storm the signs will need to be dug out, moved to the top of the new snow level, and their baskets filled in with snow or sandbags to weigh the sign down.

The Sherwins Egress Program infrastructure for winter 2011-2012 consisted of the following signs, and these signs may be removed and not deployed going forward depending on ongoing partner discussions:

- 1) One (1) 10', 2"x2" wooden post with an attached 12"x18" dibond sign using 3M Control Tac and 3M UV overlamination, seasonally located at the base of the most popular Sherwins approach just off of the Lakes Basin winter public-access corridor (Lake Mary Road in the summertime).
- 2) One (1) 12"x18" dibond sign using 3M Control Tac and 3M UV overlamination, permanently attached to the Lake Mary Road seasonal-closure sign, aka the "Lake Mary Spur."
- 3) Four (4) signs, property of Snowcreek Investment Company L.P., located on the Snowcreek Golf Course along the specified egress route.
- 4) Two (2) 12"x18" dibond signs using 3M Control Tac and 3M UV overlamination, available for replacement needs in the event of loss or damage.

Partner Coordination

The following action items comprise the necessary coordination and communication to ensure the success of the Sherwins Egress Program:

- 1) Prior to the seasonal installation of the signs, all partners shall be contacted by the program manager to provide an opportunity for comment on the upcoming seasonal operations, including, but not limited to, any updates to the sign graphics, messaging, maps, and locations.
- 2) Confirm that all signs owned and maintained by Snowcreek Investment Company L.P. are installed and properly located.
- 3) Confirm that the signs at the Borrow Pit and Mill City have been installed by Public Works.
- 4) Confirm with Tamarack Cross-Country Ski Center that the Sherwins Winter Access sign has been delivered from Public Works to Tamarack and installed at the boot pack trail off the Public Access Corridor on Lake Mary Road.
- 5) Throughout the season, partners shall be provided feedback or updates from the program managers on issues that may arise from the route's regular use.
- 6) At the end of the season, partners shall be provided a season-closing update including, but not limited to, feedback and/or suggestions from users, other partners, and the program manager.
- 7) Ad-hoc meetings may also be necessary throughout the winter season, and any stakeholder should feel free to call a meeting of the partners for concerns raised regarding the Sherwins Egress Program.

Public Outreach

The following constitutes the public outreach for the Sherwins Egress Program:

1. Seasonal-opening press release distributed to local media. (See Appendix B.)
2. Email distributed to all interested parties and partners of the MLTS. (See Appendix C.)
3. Project web page shall be updated to reflect any changes in the signage and wayfinding along the egress route and/or any other updates to the program. (See Appendix D.)

Evaluation

While no formal evaluation program is in place for the Sherwins Egress Program, this document recommends that the partners engage in a regular assessment of the program and look for opportunities for improvement.

Appendices

Appendix A: Sign Graphics and Maps
Appendix B: Sample Press Releases
Appendix C: Sample Email Messaging
Appendix D: Sample Web Pages

Appendix A: Sign Graphic and Map

Borrow Pit

Winter Access



MAMMOTHTRAILS.ORG

Mill City

Winter Access



MAMMOTH LAKES TRAIL SYSTEM

BACKCOUNTRY ACCESS

Mill City Winter Access

Mammoth Lakes Trail System Access/Egress

Borrow Pit Winter Access

Mammoth Lakes Trail System Access/Egress

Ranch Road Winter Egress

Egress only



- Paths
- Planned, Under Construction
- Roads and Highways
- Secondary Streets
- Parks
- Private Property
- Inyo National Forest
- Parking
- Ranch Road Gate

WINTER RECREATION SAFETY:

- Check local weather conditions - know the risks and be prepared!
- Tell someone WHERE you are going and WHEN you are returning.
- Remember that avalanches may occur at any time during the winter.
- Avoid mountainous terrain after heavy snowfalls or long periods of high wind.

BACKCOUNTRY SKIERS AND RIDERS:

If you're planning to get back to town by way of the Snowcreek Golf Course and Ranch Road, you'll be crossing private property.

Please follow the three Red Signs that mark the legal exit route to Ranch Road.

Following this route and respecting the privacy of adjoining private-property owners will protect all of our right to continue to use this route in the future.



MAMMOTHTRAILS.ORG

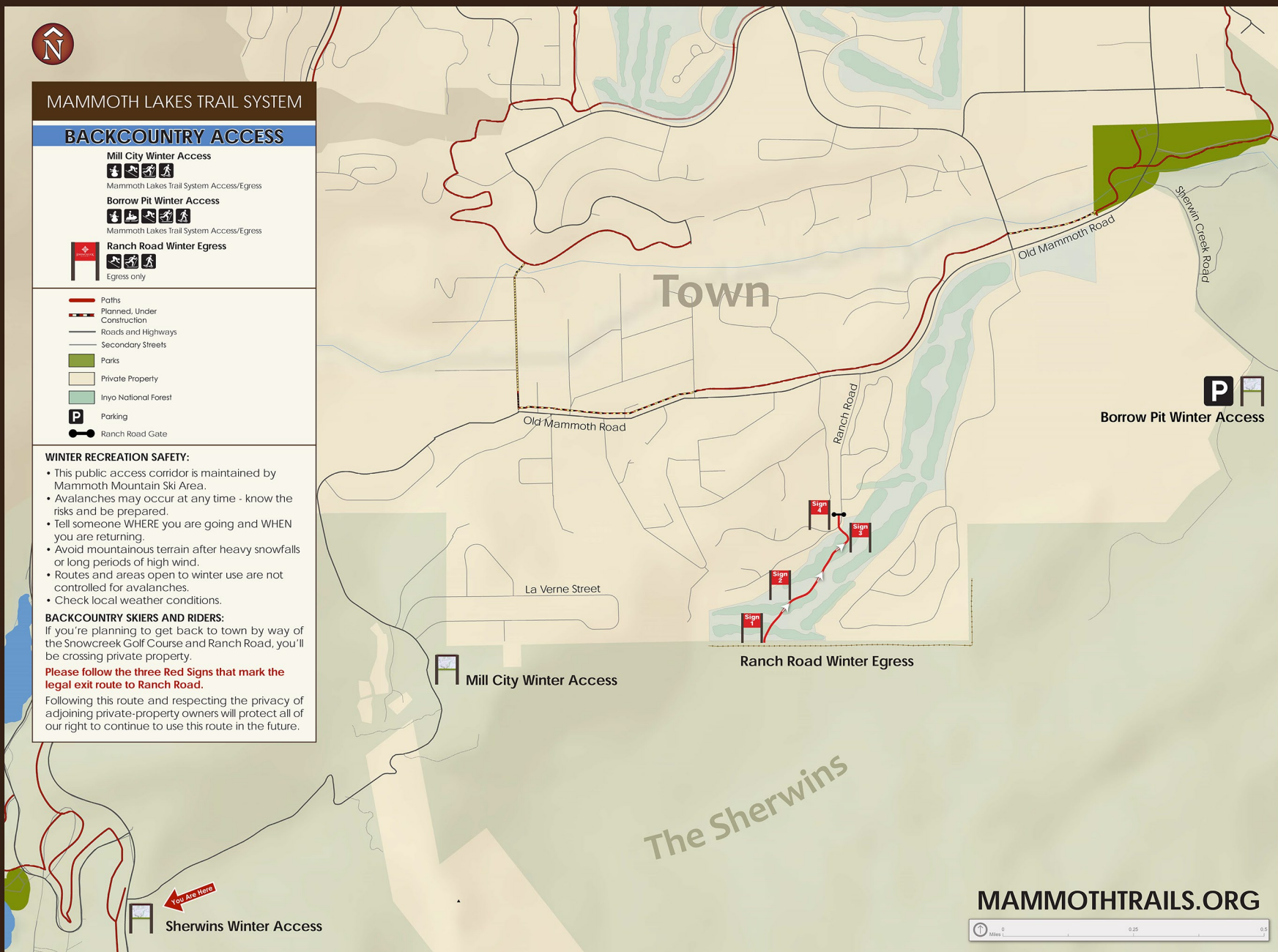
0 0.25 0.5 Miles

MAMMMOTH LAKES TRAIL SYSTEM



Sherwins

Winter Access

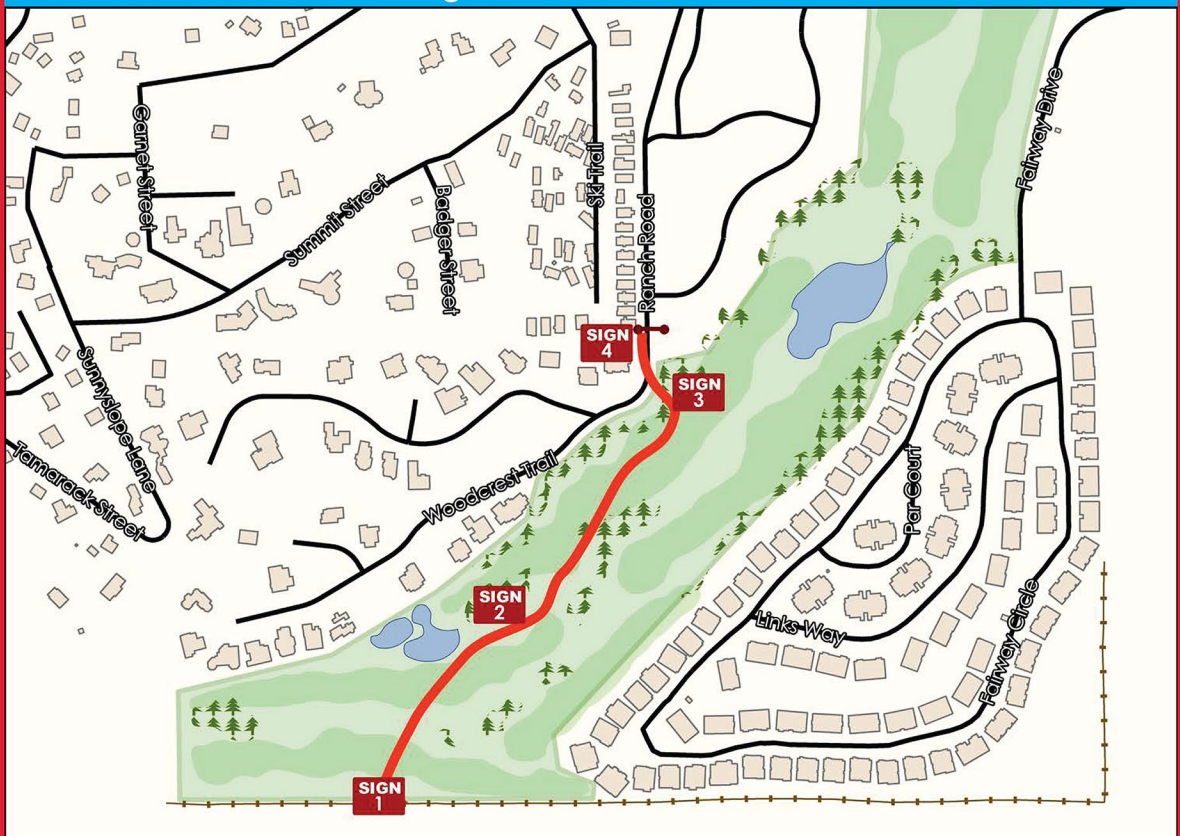


SHERWINS SKIERS AND SNOWBOARDERS:

If you're planning to get back to town by way of Old Mammoth Road rather than Sherwin Creek Road, you'll be crossing private land. Please follow the approved route to Ranch Road. Four red signs mark this route: the first is located on the fence that edges Snowcreek Golf Course and shows where to cross the course; the second and third signs direct you to Ranch Road; and the fourth is located on the left (west) side of the gate and directs you to the public easement around the gate. This is the only legal route across these private lands. Following it and respecting the privacy of adjoining private-property owners will protect your right to continue to use this route. Look for the red signs.

Thank you and have a great day!
Mammoth Lakes Trails and Public Access Foundation
Snowcreek Resort
Town of Mammoth Lakes

Please follow the four red signs to Ranch Road.



Appendix B: Sample Press Release



January 22, 2016

FOR IMMEDIATE RELEASE – DRAFT/NOT FOR PUBLICATION

Contact: Joel Rathje, Trails Coordinator, Mammoth Lakes Trail System
jrathje@townofmammothlakes.ca.gov

ACCESSING SHERWINS WINTER RECREATION OPPORTUNITIES

The Sherwins offer a wide variety of diverse winter recreation opportunities, including backcountry skiing and snowboarding experiences, which are directly accessible from the community of Mammoth Lakes. In addition to the signed and maintained “egress only” route across the Snowcreek golf course, the public is encouraged to take advantage of winter access opportunities at the Borrow Pit off of Sherwin Creek Road as well as the Mill City access at the winter closure of Old Mammoth Road. These winter access points serve as gateways for front and backcountry users alike, including opportunities for a wide variety of winter fun. Parking opportunities and temporary winter signage will be available at both the Borrow Pit and Mill City, providing information and winter recreation safety tips. For backcountry riders using the “egress only” route across the Snowcreek Golf Course to complete their Sherwin adventures, please be sure to follow the identified route and respect the private property that you are crossing and the privacy of the homes near the route.

The Borrow Pit, located south of Town next to the propane tank farm off of Sherwin Creek Road, features a new paved parking area along with new temporary winter signage providing multi-use access for snowmobiling, cross-country skiing, snowshoeing, snowplay, and backcountry skiing and snowboarding.

Mill City, located at the winter road closure at the southern end of Old Mammoth Road, will also feature new temporary winter signage establishing an access point to the Sherwins for backcountry adventurers and for frontcountry recreation including cross-country skiing, snowshoeing, and snowplay.

For more information about winter recreation opportunities in the Sherwins, please visit the Mammoth Lakes Trail System website at mammothtrails.org. For information on avalanche hazard levels and traveling in avalanche terrain, please visit the Eastern Sierra Avalanche Center Web site at www.esavalanche.org. Be safe and have fun!

###

The Mammoth Lakes Trail System is a partnered effort of the Town of Mammoth Lakes and the United States Forest Service.



December 18, 2011

FOR IMMEDIATE RELEASE

Contact: Kim Stravers, MLTPA Community Engagement Director, at (760) 934-3154 or kimstravers@mltpa.org

PUBLIC EGRESS FROM THE SHERWINS TO RANCH ROAD

In 2006, conflicts between private property owners and skiers and snowboarders exiting the Sherwins nearly closed the most convenient route back to town. Through the cooperative efforts of Snowcreek Investment Company, the Town of Mammoth Lakes, the Mammoth Lakes Trails and Public Access Foundation (MLTPA), and local homeowners, an agreement was reached that provides a direct and legal route from the base of the Sherwins to the public-access easement at Ranch Road. The route across the Snowcreek golf course has been legally secured through the Town Council's adoption of the Snowcreek VIII Master Plan and the Snowcreek Development Agreement. By following the identified route and respecting the privacy of the nearby homes, skiers and snowboarders can protect their ability to continue to use this route.

The Sherwins area is one of the most accessible and diverse out-of-bounds ski areas in the country. It provides a wide variety of backcountry skiing and riding conveniently located adjacent to the community of Mammoth Lakes. The most direct route for getting back to town from the Sherwins area requires crossing private land to get to the bus or your car. As a part of its approved development plans, Snowcreek Investment Company has provided a legal route that connects the base of the Sherwins area to the gate at Ranch Road. This route across the Snowcreek property is marked with four red signs. It begins at the fence on the south side of the golf course and heads directly to Ranch Road. Once at Ranch Road, walk around the left (west) side of the gate—not through the yards of nearby homes. From Ranch Road, the bus stop at Snowcreek Athletic Club is just a short walk. This is the only legal way out from the western base of the Sherwins directly to Old Mammoth Road. Skiers and riders exiting the eastern parts of the Sherwins may prefer to get back to town via Sherwin Creek Road.

Public parking is available at Mammoth Creek Park and the Tavern Road Park and Ride lot. Both lots can be reached by bus from Snowcreek Athletic Club.

Please be sure to follow the identified route and respect the private property that you are crossing and the privacy of the homes near the route. This will assure that your ability to ski/board/walk out from the Sherwins will be protected.

For more information about skiing the Sherwins, please visit www.mltpa.org. For information on avalanche hazard levels and traveling in avalanche terrain, please visit the Eastern Sierra Avalanche Center Web site at www.esavalanche.org.

Thank you for your consideration in responsibly using the identified routes. Be safe and have fun!

###

The Mammoth Lakes Trails and Public Access Foundation (MLTPA) is a 501(c)(3) public benefit corporation dedicated to trails and public access issues in Mammoth Lakes, Calif., and the immediate Eastern Sierra region. MLTPA partners with local jurisdictions and agencies, businesses, nonprofits, and individuals to connect people to nature and to provide a forum for all trail users to be involved.

Appendix C: Sample Email Messaging

Sherwins Egress Partner Update

Greetings Sherwins Egress Partners:
(TOML, Chadmar/Snowcreek, MMSA/Tamarack, MLTPA)

Thanks to the coordinated effort among The Chadmar Group, the Town of Mammoth Lakes, MMSA/Tamarack and MLTPA, during the winter of 2010-2011, we witnessed the successful implementation of the Sherwins egress. We would like to take this opportunity to thank you for your commitment to this process and assistance in making this a successful endeavor for the community of Mammoth Lakes. We would also like to take a moment of your time to update you on the implementation of this project and inform the partners of some identified opportunities for improvement.

In early March 2011, the Mammoth Lakes community was informed of the Sherwins egress program through various news media outlets, including the Sierra Wave, the Sheet, Mammoth Times, Recreation This Week, and the Town E-News. With this outreach, and improved signage and wayfinding along the route, the egress route was highly visible and allowed for some important feedback from recreationists and other interested parties. Based on the feedback received from users and partners, as well as the observances from a site visit between MLTPA and Snowcreek's John Morris, the following recommendations are being made to improve the Sherwins egress program:

- 1) The first and largest sign along the southern fence line that directs users where to start crossing the golf course, should be moved approximately 150 feet to the east along the fence line to improve visibility and to better direct recreationists to the public easement at the Ranch Road Gate.
- 2) There should be an additional directional sign placed on the golf course, to be located on a prominent knoll in the line of sight of the approved route.
- 3) On the two informational signs located along Lake Mary Road, additional messaging is to be coordinated with MMSA/Tamarack to prevent confusion among MMSA/Tamarack snowshoers thinking that there is a snowshoe route heading up the Sherwin ridge.

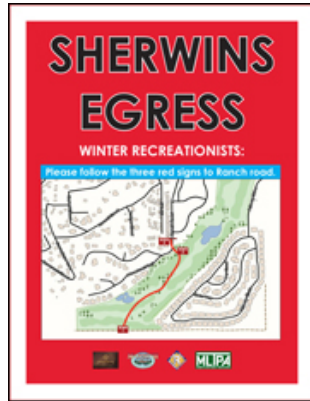
Building on the success of this past winter, we hope to continue to provide winter recreationists with a safe and convenient egress route. Thanks again for helping make this project a success and helping to improve the egress route for next winter. If you have any additional comments or questions, please don't hesitate to contact Drew Blankenbaker, MLTPA Natural Resources Director, at drewblankenbaker@mltpa.org (760) 934-3154. We hope to have the Sherwins egress program up and in place prior to the Christmas holidays, 2011.

Appendix D: Sample Web Page

Current Projects

- Mammoth Lakes Trail System
- MLTS Summer of Stewardship 2011
- MLTS Interpretive Services Planning
- **Sherwins Egress**
- Measure R Grants and Reporting
- Mono County Recreation Access Tool (MCRAT)
- MLTS Signage & Wayfinding Program
- Shady Rest Motorized Staging Project
- RecStrats
- LABSS: Lakes Basin Special Study
- Summer of Stewardship 2010
- Trail System Master Plan Final Draft (2009)
- MLTPA GIS Inventory Contract (MLTPA GIC)
- Archived Projects
- Advocacy

Sherwins Egress



Project Description: During the winter of 2005-2006, conflicts between local backcountry skiers/snowboarders, homeowners, and private-property interests threatened to forever close the safest and most convenient winter egress route from the base of the Sherwin Range to the town of Mammoth Lakes. Today, thanks to a partnership between The Chadmar Group (developer of Snowcreek VIII), the Town of Mammoth Lakes (TOML), and MLTPA, an approved, legal route leading outdoor recreationists home from the base of this well-loved frontcountry ski amenity has been secured and marked with directional signage. The Snowcreek egress route is the result of a two-year decision-making process and is a component of the adopted Snowcreek VIII Master Development Plan.

The egress proceeds along a designated route across the Snowcreek Golf Course and terminates on the north side of the gate across Ranch Road via a public easement around the gate's west side. (Please see the accompanying sign detail, downloadable below, for more information). Backcountry enthusiasts are urged to follow only this identified route, as it is the sole legal egress route to town from the Sherwin Range between Mill City to the west and the Borrow Pit to the east. Travel across any other portion of the Snowcreek Golf Course, which is a private holding, is prohibited and users may be cited for trespassing. Please respect the rights of homeowners and private-property interests and assist your fellow backcountry enthusiasts in reinforcing the value of this route for the long term by following the installed signage across the Snowcreek Golf Course as you exit the Sherwins.

Winter 2011/2012 Update:

As a part of its approved development plans, Snowcreek Investment Company has provided a legal route that connects the base of the Sherwins area to the gate at Ranch Road and is in effect once there is adequate snow cover across the golf course. This route across the Snowcreek property is marked with four red signs. This is the only legal way out from the western base of the Sherwins directly to Old Mammoth Road. Skiers and riders exiting the eastern parts of the Sherwins may prefer to get back to town via Sherwin Creek Road. Click [here](#) to download the official press release and learn more about this egress.

DELIVERABLES

[Press Release, 12/17/11](#) (98 KB)

[Press Release, 03/16/11](#) (106 KB)

[Sign Detail](#) (2.2 MB)

PHOTOS

Click [here](#) to check out a photo gallery of the Sherwins Egress signage and route.

PRESS

[Recreation This Week, 12/21/11](#) (139 KB)

[Town E-News, 12/22/11](#) (111 KB)

[Mammoth Times editorial, 03/04/11](#) (1.6 MB)

Sign up for our newsletter!
 Enter your email address here:

Via credit card or e-check: [Click here!](#)

			Indicates Capital	
			Indicates Planning	
			Indicates Program	
Program Area	TOML Activity Code	Project Name		Proposed Budget
Planning				
Collaborative Processes	202	Inyo Craters/Shady Rest Planning		\$ 20,000.00
Design			Sub Total =	\$ 20,000.00
Project Design	212	SHARP – Trail Design		CONSTRUCT RESERVE
Trail Alignment Studies	213	SHARP - Trail Alignment Studies		\$ 3,750.00
	213	LABSS - Trail Alignment Studies		\$ 3,750.00
Implementation			Sub Total =	\$ 7,500.00
Easement/ Access Neg.	222	Sherwins – Winter Access/Egress		\$ 1,500.00
Environmental - Project	223	SHARP Environmental - NEPA/CEQA		ENVIRO RESERVE
Implementation/ Construct	224	SHARP – Trail Construction Fund		CONSTRUCT RESERVE
	224	Signage and Wayfinding – Map Updates & Repair		CONSTRUCT RESERVE
	224	Soft Surface Signage Implementation		CONSTRUCT RESERVE
Operations			Sub Total =	\$ 1,500.00
Governance	232	TOML Staff Time for MLTS Project Support		\$ 3,500.00
	232	MLTS Trails Coordinator + Support		\$ 112,698.75
	232	MLTS Digital Systems Management		\$ 25,000.00
	232	MLTS Action Plan + Annual Budget		\$ 1,000.00
Interagency Coordination	233	MLTS Communications		\$ 2,500.00
Website	235	MLTS Website Operations and Maintenance		\$ 7,500.00
	235	MLTS Website – TOML Tech Support		\$ 1,000.00
	235	MLTS Website – Content Development		\$ 10,000.00
Information Systems	236	MLTS Data Library		\$ 3,500.00
Interpretive	237	MLTS Interp Program		\$ 2,000.00
Image Library	240	MLTS Photo and Image Library		\$ 2,000.00
Maintenance			Sub Total =	\$ 170,698.75
MUP Maintenance	251	Winter Mobility Program		\$ 2,000.00
Soft Surface Trail Maint.	252	MLTS Trail Days (FOI)		\$ 8,000.00
	252	MLTS Trail Days (MLTPA)		\$ 8,500.00
	252	MLTS Soft Surface Trail Maintenance		\$ 50,000.00
Nordic Trail Maint.	254	MLTS Winter Grooming		\$ 20,000.00
Trailhead Maintenance	256	Poo Fairy and Fecal Maintenance		\$ 2,500.00
Stewardship			Sub Total =	\$ 91,000.00
Mammoth Trails	272	Mammoth Trails		\$ 1,500.00
Adopt A Trail	276	MLTS Adopt A Trail		\$ 2,500.00
Marketing/Promotion			Sub Total =	\$ 4,000.00
Trail Maps / Guides	282	Printed Maps and Trail Guides		\$ 5,301.25
			Sub Total =	\$ 5,301.25
			Total=	\$ 300,000.00
			Program Total=	\$ 267,198.75
			Planning Total=	\$ 27,500.00
			Capital Total=	\$ 5,301.25
			Annual Total=	\$ 300,000.00
			Reserve for Trail Facilities Environmental Analysis=	\$125,000.00
			Reserve for Trail Facilities Construction=	\$140,000.00



**MLTS – FY 16/17 Budget
Proposed Changes
DRAFT: 16/03/03**

1. Program Changes and Updates

- a. Establishment of Reserve Accounts
 - i. “Reserve for MLTS Environmental Analysis”
 - ii. “Reserve for MLTS Trail Facilities Construction”
 - 1. Encumber all non-initiated project funds in the Measure R Trails Account
- b. FY 15/16 Projects – Update and Future Status
 - i. “SR 203 Tunnel – OSV Access to Shady Rest RV Park”
 - 1. Project goals to be addressed by Inyo NF Sub Part C
 - a. Anticipated 2 Year Process
 - 2. Seek TC direction to return funds to the MLTS Measure R Account until Sub Part C Decision
 - ii. “Winter Recreation Summit - TSMP Implementation”
 - 1. One Time Project - To Be Completed in FY 15/16
 - iii. “Signage and Wayfinding - Soft Surface”
 - 1. One Time Project - To Be Completed in FY 15/16
 - 2. Future efforts to be combined with “MLTS Map Updates and Repair”
 - 3. All signage standards efforts in one project
 - iv. “SHARP - Trail Construction Fund”
 - 1. Ongoing project
 - 2. Rename: "MLTS Trail Facilities Construction Fund"
 - a. Any budgeted/allocated funds will be held in the “Reserve for MLTS Trail Facilities Construction”
 - v. “Existing Pedestrian Easements”
 - 1. Delete Project: Not initiated in FY 15/16
 - vi. “SHARP - Trails NEPA Analysis INF”
 - 1. Ongoing Project
 - 2. Combine with CEQA efforts
 - 3. Rename as "SHARP Environmental: NEPA + CEQA"
 - 4. Fund from “Reserve for Environmental Analysis”
 - a. As reliable opportunities are identified
 - vii. “SHARP - Trails CEQA Analysis TOML”
 - 1. Ongoing Project
 - 2. Combine with NEPA efforts
 - 3. Rename as "SHARP Environmental: NEPA + CEQA"
 - 4. Fund from “Reserve for Environmental Analysis”
 - a. As reliable opportunities are identified
 - viii. “Soft Surface Trails – USFS Permitting”

1. Delete Project
 - a. Falls under salaried staff efforts of TOML and/or USFS going forward
- ix. "MLTS Facilities for TOML CIP"
 1. Delete Project
 - a. Falls under salaried staff efforts of TOML and/or USFS going forward
- x. "Contingency/Leverage Funds"
 1. Delete Project
 - a. Move funds into "Reserve for MLTS Trail Facilities Construction"
- xi. "INF OSV NEPA Review – Matching Funds"
 1. One Time Project - To Be Completed in FY 15/16
- xii. "Lakes Basin Stewards"
 1. Project reallocated into two projects going forward
 - a. "MLTS Soft Surface Maintenance"
 - b. "MLTS Interpretive Program"
- xiii. "Wayfinding Update"
 1. Delete Project - Not initiated in FY 15/16
- xiv. "Wayfinding Temporary Soft Surface"
 1. Delete Project - Not initiated in FY 15/16
- xv. "Trail Days – FOI"
 1. Rename as "MLTS Trail Days"
 - a. 50% budget reduction going forward
- xvi. "Trail Days – MLTPA"
 1. Rename as "MLTS Trail Days"
 - a. 50% budget reduction going forward
- xvii. "Shady Rest – Winter Grooming"
 1. Change name to "MLTS Winter Grooming"
- xviii. "Lakes Basin Early Opening/Late Fall Closure"
 1. Delete Project - Not initiated in FY 15/16

2. New Projects

- a. "MLTS Digital Systems Management"
 1. Project management of MLTS Digital Systems
 2. Using current staff
- b. "MLTS Interp Program"
 - i. New home for Lakes Basin Stewards
 - ii. Expanded to include implementation of the adopted MLTS Interp Program
- c. "Poo Fairy and Fecal Maintenance"
 - i. Fecal clean up program

MLTS Draft Budget Review FY 15/16 - FY 19/20
Last Update: 16/03/03

CODE	PROJECT	YEAR FY 15/16	YEAR FY 16/17	YEAR FY 17/18	YEAR FY 18/19	YEAR FY 19/20
201 PLANNING						
202 Collaborative Processes						
202	Inyo Craters/Shady Rest		\$ 20,000.00			
203 Focused Planning Efforts						
203	SR 203 Tunnel - OSV Access to Shady Rest RV Park	\$ -				
203	Winter Recreation Summit - TSMP Implementation	\$ 20,000.00				
204 Environmental Review						
204	LABSS - Environmental Analysis CEQA/NEPA	\$ -		\$ 40,000.00		
		\$ 20,000.00	\$ 20,000.00	\$ 40,000.00	\$ -	\$ -
211 DESIGN						
211 Guidelines & Standards						
211	Signage and Wayfinding - Soft Surface	\$ 4,000.00				
212 Project Design						
212	SHARP - Trail Design	\$ -	\$ -	\$ -	\$ -	\$ -
212	LABSS - Trail Design	\$ -			\$ 10,000.00	\$ 10,000.00
213 Trail Alignment Studies						
213	SHARP - Trail Alignment Studies	\$ 1,500.00	\$ 3,750.00	\$ 3,750.00	\$ 3,750.00	\$ 3,750.00
213	LABSS - Trail Alignment Studies	\$ 1,500.00	\$ 3,750.00	\$ 3,750.00	\$ 3,750.00	\$ 3,750.00
		\$ 7,000.00	\$ 7,500.00	\$ 7,500.00	\$ 17,500.00	\$ 17,500.00
221 IMPLEMENTATION						
222 Easements/Access Negotiations						
222	Sherwins - Winter Access/Egress	\$ 1,500.00	\$ 1,500.00	\$ 12,500.00	\$ 12,500.00	\$ 12,500.00
223 Environmental - Project						
223	SHARP - Trails NEPA Anlysis NF	\$ -	\$ -	\$ -	\$ -	\$ -
223	SHARP - Trails CEQA Anlysis TOML	\$ -	\$ -	\$ -	\$ -	\$ -
224 Implementation/ Construction						
224	SHARP - Trail Construction Fund	\$ -	\$ -	\$ -	\$ -	\$ -
224	Signage and Wayfinding - Map Updates & Repair	\$ 8,000.00	\$ -	\$ -	\$ -	\$ -
224	Soft Surface Signage Implementation	\$ 3,000.00	\$ -	\$ -	\$ -	\$ -
		\$ 12,500.00	\$ 1,500.00	\$ 12,500.00	\$ 12,500.00	\$ 12,500.00
231 OPERATION						
231 Management Plan						
231	MLTS Authorities Management Program		\$ -			\$ 2,500.00
231	Soft Surface Trails - USFS Permitting	\$ -				
232 Governance						
232	TOML Staff Time for MLTS Project Support	\$ 5,000.00	\$ 3,500.00	\$ 3,500.00	\$ 3,500.00	\$ 3,500.00
232	MLTS Trails Coordinator + Support	\$ 109,950.00	\$ 112,698.75	\$ 115,516.22	\$ 118,404.12	\$ 121,364.23
232	Digital Systems Management	\$ -	\$ 25,000.00	\$ 25,000.00	\$ 25,000.00	\$ 25,000.00
232	MLTS Action Plan + Annual Budget	\$ 2,000.00	\$ 1,000.00	\$ 1,000.00	\$ 1,000.00	\$ 1,000.00
424	MLTS Facilities for TOML CIP	\$ -				
233 Interagency Coordination						
233	Communications - in Support of MLTS	\$ 3,000.00	\$ 2,500.00	\$ 2,500.00	\$ 2,500.00	\$ 2,500.00
234 Coningency/Leverage						
234	Contingency/Leverage Funds	\$ -				
234	INF OSV NEPA Review - Matching Funds	\$ -				
235 Website						
235	MLTS Website Operations and Maintenance	\$ 12,500.00	\$ 7,500.00	\$ 7,500.00	\$ 7,500.00	\$ 7,500.00
235	MLTS Website - TOML Tech Support	\$ 1,000.00	\$ 1,000.00	\$ 1,000.00	\$ 1,000.00	\$ 1,000.00
235	MLTS Website - Content Development	\$ 14,000.00	\$ 10,000.00	\$ 10,000.00	\$ 10,000.00	\$ 10,000.00
236 Information Systems						
236	MLTS Data Library	\$ 5,000.00	\$ 3,500.00	\$ 3,500.00	\$ 3,500.00	\$ 3,500.00
237 Interpretive						
237	Lakes Basin Stewards	\$ 35,800.00				
237	MLTS Interpretive Program Implementation		\$ 2,000.00	\$ 2,000.00	\$ 2,000.00	\$ 2,000.00
240 Image Library						
240	MLTS Photo and Image Library	\$ 1,000.00	\$ 2,000.00	\$ 2,000.00	\$ 2,000.00	\$ 2,000.00
241	Wayfinding Maps	\$ -				
		\$ 189,250.00	\$ 170,698.75	\$ 173,516.22	\$ 176,404.12	\$ 181,864.23
251 MAINTENANCE						
251 MUP Maintenance						
251	Winter Mobility Program	\$ 2,000.00	\$ 2,000.00	\$ 2,000.00	\$ 2,000.00	\$ 2,000.00
252 Soft Surface Trail Maint.						
252	Trail Days - FOI	\$ 16,000.00	\$ 8,000.00	\$ 8,000.00	\$ 8,000.00	\$ 8,000.00
252	Trail Days - MLTPA	\$ 8,500.00	\$ 8,500.00	\$ 8,500.00	\$ 8,500.00	\$ 8,500.00
252	Soft Surface Trail Maintenance Program	\$ 30,000.00	\$ 50,000.00	\$ 40,000.00	\$ 40,000.00	\$ 40,000.00
254 Nordic Trail Maint.						
254	Shady Rest - Winter Grooming	\$ 20,000.00	\$ 20,000.00	\$ 20,000.00	\$ 20,000.00	\$ 20,000.00
256 Trailhead Maintenance						
256	Poo Fairy and Fecal Maintenance	\$ 5,000.00	\$ 2,500.00	\$ 2,500.00	\$ 2,500.00	\$ 2,500.00
		\$ 81,500.00	\$ 91,000.00	\$ 81,000.00	\$ 81,000.00	\$ 81,000.00
271 STEWARDSHIP						
272 Mammoth Trails						
272	Mammoth Trails	\$ 700.00	\$ 1,500.00	\$ 1,500.00	\$ 1,500.00	\$ 1,500.00
276 Adopt A Trail						
276	Adopt A Trail	\$ 1,500.00	\$ 2,500.00	\$ 2,500.00	\$ 2,500.00	\$ 2,500.00
		\$ 2,200.00	\$ 4,000.00	\$ 4,000.00	\$ 4,000.00	\$ 4,000.00
281 MARKETING/PROMOTION						
282 Trail Maps / Guides						
282	Printed Maps and Trail Guides		\$ 5,301.25	\$ 5,301.25	\$ 5,301.25	\$ 5,301.25
		\$ -	\$ 5,301.25	\$ 5,301.25	\$ 5,301.25	\$ 5,301.25

Total = \$ 312,450.00 \$ 300,000.00 \$ 323,817.47 \$ 296,705.37 \$ 302,165.48

Indicates Capital
Indicates Planning
Indicates Program

Program Total = \$ 267,198.75 \$ 271,016.22 \$ 273,904.12 \$ 279,364.23
 Planning Total = \$ 27,500.00 \$ 47,500.00 \$ 17,500.00 \$ 17,500.00
 Capital Total = \$ 5,301.25 \$ 5,301.25 \$ 5,301.25 \$ 5,301.25
 Annual Total = \$ 300,000.00 \$ 323,817.47 \$ 296,705.37 \$ 302,165.48

Reserve for Environmental Analysis = \$125,000.00 \$125,000.00 \$125,000.00 \$125,000.00
 Reserve for Trail Facilities Construction = \$140,000.00 \$140,000.00 \$140,000.00 \$100,000.00

MLTS 2015/2016 Project Management Overview
DRAFT - Proposed Mid Year Budget Adjustments - Updated 160205

										Indicates Proposed Funds Subtracted	
										Indicates Proposed Funds Added	
										Indicates No Data Available	
Program Area	Project Code (Legacy)	TOML Activity Code	Contractor Code	Project Name	Proj. Lead	INITIATION RECONCILE MID YEAR	SOFT SURFACE TRAIL MAINT ONLY	INITIATION MID YEAR IN	INITIATION MID YEAR OUT	INITIATION RECONCILE MID YEAR	
						TOTAL FUNDS	ONLY	MTC IN	MTC OUT	BALANCE	
Planning											
Focused Planning Efforts	146a	TBD	046_01_OSV_203_1516	SR 203 Tunnel – OSV Access to Shady Rest RV Park	TOML	\$ 18,998.00	\$ -	\$ -	(8,750.00)	\$ 10,248.00	
		TBD	104_01_MWRS1516	Winter Recreation Summit - TSMP Implementation	MLTPA	\$ -	\$ -	\$ 20,000.00	-	\$ 20,000.00	
Environmental Review	312	TBD	096_01_LABSS_ENV1516	LABSS – Environmental Analysis CEQA/NEPA	TOML	\$ 40,000.00	\$ (40,000.00)	\$ -	-	\$ -	
Design						\$ 58,998.00	\$ (40,000.00)	\$ 20,000.00	(8,750.00)	\$ 30,248.00	
Guidelines & Standards	212	TBD	052_01_SoftSurf1516	Signage and Wayfinding – Soft Surface	MLTPA	\$ 7,500.00	\$ -	\$ -	-	\$ 7,500.00	
Project Design	231	TBD	100_01_SHARP_DESIGN_P_1	SHARP – Trail Design	TOML	\$ -	\$ -	\$ -	-	\$ -	
	232	TBD	101_01_LABSS_Design	LABSS – Trail Design	TOML	\$ 5,000.00	\$ (3,500.00)	\$ -	(1,500.00)	\$ -	
Trail Alignment Studies	221	TBD	051_03_TTC1516	SHARP - Trail Alignment Studies	MLTPA	\$ 2,500.00	\$ (1,000.00)	\$ -	-	\$ 1,500.00	
	222	TBD	097_01_LABSS_TTC1516	LABSS - Trail Alignment Studies	MLTPA	\$ 5,000.00	\$ (3,000.00)	\$ 1,250.00	-	\$ 3,250.00	
Implementation						\$ 20,000.00	\$ (7,500.00)	\$ 1,250.00	(1,500.00)	\$ 12,250.00	
Easement/ Access Neg.	321	TBD	053_04_ShWegr1516	Sherwins – Winter Access/Egress	MLTPA	\$ 1,500.00	\$ -	\$ -	-	\$ 1,500.00	
	721 / 581	TBD	Not Initiated	Existing Pedestrian Easements	N/A	\$ -	\$ -	\$ -	-	\$ -	
Environmental - Project	311	TBD	099_02_SHARP_NEPA_P_1	SHARP - Trails NEPA Analysis INF	TOML	\$ 48,225.00	\$ -	\$ -	-	\$ 48,225.00	
	147	TBD	099_03_SHARP_CEQA_P_1	SHARP - Trails CEQA Analysis TOML	TOML	\$ 10,000.00	\$ (10,000.00)	\$ -	-	\$ -	
Implementation/Construct	331	TBD	071_01_SHARP_BLD1516	SHARP – Trail Construction Fund	TOML	\$ 38,995.00	\$ -	\$ -	-	\$ 38,995.00	
	490.01	TBD	052_02_MapUpdate1516	Signage and Wayfinding – Map Updates & Repair	MLTPA	\$ 8,000.00	\$ -	\$ -	-	\$ 8,000.00	
		TBD	075_03_SoftSurf1516	Soft Surface Signage Implementation	TOML	\$ -	\$ -	\$ 3,000.00	-	\$ 3,000.00	
Operations						\$ 106,720.00	\$ (10,000.00)	\$ 3,000.00	-	\$ 99,720.00	
Management Plan	111 (#3)	TBD	093_01_MLTS_MP_1516	MLTS Authorities and Management Plan	MLTPA	\$ -	\$ -	\$ -	-	\$ -	
	412	TBD	062_01_USFS_PERMIT1516	Soft Surface Trails – USFS Permitting	TOML	\$ 10,000.00	\$ -	\$ -	(5,000.00)	\$ 5,000.00	
Governance	111 (#1)	TBD	091_01_TOMLSupport_1516	TOML Staff Time for MLTS Projects Support	TOML	\$ 12,000.00	\$ -	\$ -	-	\$ 12,000.00	
	111 (#2)	TBD	092_MLTS_TC	MLTS Trails Coordinator + Support	TOML	\$ 109,950.00	\$ -	\$ -	-	\$ 109,950.00	
	111 (#4)	TBD	094_MLTS_ACT_BUD	MLTS Action Plan + Annual Budget	MLTPA	\$ -	\$ -	\$ 4,000.00	-	\$ 4,000.00	
	111 (#5)	TBD	091_02_TOMLCIP_1516	MLTS Facilities for TOML CIP	TOML	\$ -	\$ -	\$ -	-	\$ -	
Interagency Coordination		TBD	031_02_MLTS_OR1516	Communications - in Support of MLTS	MLTPA	\$ -	\$ -	\$ 3,000.00	-	\$ 3,000.00	
Contingency/Leverage	441	TBD	057_06_CONT_LEV1516	Contingency/Leverage Funds	TOML	\$ 21,000.00	\$ -	\$ -	-	\$ 21,000.00	
	146	TBD	057_05_OSV_NEPA1516	INF OSV NEPA Review – Matching Funds	TOML	\$ 20,000.00	\$ -	\$ -	(20,000.00)	\$ -	
Website	451.01	TBD	088_02_MT_WebMgt_1516	MLTS Website Operations and Maintenance	MLTPA	\$ 20,000.00	\$ (3,000.00)	\$ -	(3,000.00)	\$ 14,000.00	
	451.02	TBD	088_03_MT_WebTML_1516	MLTS Website – TOML Tech Support	TOML	\$ 2,500.00	\$ -	\$ -	-	\$ 2,500.00	
	451.03	TBD	098_01_MT_WebCon_1516	MLTS Website – Content Development	MLTPA	\$ 12,000.00	\$ (2,000.00)	\$ 4,000.00	-	\$ 14,000.00	
Information Systems	461	TBD	029_01_Data_OM_1516	MLTS Data Library	MLTPA	\$ 3,000.00	\$ -	\$ 1,000.00	-	\$ 4,000.00	
Interpretive	472	TBD	095_01_LB_STWRDS1516	Lakes Basin Stewards	FOI	\$ 35,800.00	\$ -	\$ -	-	\$ 35,800.00	
Image Library	491	TBD	069_05_Photo_OM_1516	MLTS Photo and Image Library	MLTPA	\$ 3,000.00	\$ -	\$ -	-	\$ 3,000.00	
Wayfinding Maps	473	TBD	Not Initiated	Wayfinding Update	N/A	\$ -	\$ -	\$ -	-	\$ -	
Wayfinding Signage	490.02	TBD	Not Initiated	Wayfinding Temporary Soft Surface	N/A	\$ -	\$ -	\$ -	-	\$ -	
Maintenance						\$ 249,250.00	\$ (5,000.00)	\$ 12,000.00	(28,000.00)	\$ 228,250.00	
MUP Maintenance		TBD	102_02_WintMob1516	Winter Mobility Program	TOML	\$ -	\$ -	\$ 2,000.00	-	\$ 2,000.00	
Soft Surface Trail Maint.	511 (#1)	TBD	090_6_FOI15	Trail Days - FOI	FOI	\$ 16,000.00	\$ -	\$ -	-	\$ 16,000.00	
	511 (#2)	TBD	090_SOS15	Trail Days - MLTPA	MLTPA	\$ 17,000.00	\$ -	\$ -	-	\$ 17,000.00	
		TBD	105_01_SoftSurfTrailMaint1516	Soft Surface Trail Maintenance Program	TOML	\$ -	\$ -	\$ 80,000.00	-	\$ 80,000.00	
Nordic Trail Maint.	551	TBD	102_01_WintGroom1516	Shady Rest – Winter Grooming	FOI	\$ 20,000.00	\$ -	\$ -	-	\$ 20,000.00	
Trailhead Maintenance	571	TBD	Not Initiated	Lakes Basin Early Opening/Late Fall Closure	N/A	\$ -	\$ -	\$ -	-	\$ -	
Stewardship						\$ 53,000.00	\$ -	\$ 82,000.00	-	\$ 135,000.00	
Mammoth Trails	431	TBD	014_05_MT_OM_1516	Mammoth Trails	MLTPA	\$ 1,200.00	\$ (500.00)	\$ -	-	\$ 700.00	
Adopt A Trail	611 / 512	TBD	041_01_AAT1516	Adopt A Trail	MLTPA	\$ 7,500.00	\$ (7,000.00)	\$ -	-	\$ 500.00	
Marketing/Promotion						\$ 8,700.00	\$ (7,500.00)	\$ -	-	\$ 1,200.00	
Trail Maps / Guides	731	TBD	103_01_MapsGuides1516	Printed Maps and Trail Guides	MLTPA	\$ 10,000.00	\$ (10,000.00)	\$ -	-	\$ -	
						\$ 10,000.00	\$ (10,000.00)	\$ -	-	\$ -	
Totals =						\$ 506,668.00	\$ (80,000.00)	\$ 118,250.00	(38,250.00)	\$ 506,668.00	

Town of Mammoth Lakes - Trail System Master Plan (TSMP)
 Current Status of Recommended Projects and Programs
 Updated by MLTPA - December 02, 2015

Chapters/Sections	TSMP Citation	TSMP TITLE	No Work To Date	Work Initiated	Program Ready	Capital Proposed	Capital Complete	Maintenance	NOTES
Chapt 4 - 01 - G	G01	Naming Conventions							
Chapt 4 - 01 - G	G02	Updated Trail Maps							
Chapt 4 - 01 - G	G03	Uniform Trail Signage							
Chapt 4 - 01 - G	G04	Interpretive Signage							
Chapt 4 - 01 - G	G05	Trail-Oriented Development							
Chapt 4 - 01 - G	G06	Pedestrian-Oriented Development							
Chapt 4 - 01 - G	G07	Data Management							
Chapt 4 - 01 - G	G08	Design Guidelines							
Chapt 4 - 01 - G	G09	Trail and Mobility Needs							
Chapt 4 - 01 - G	G10	Future Access Easements							
Chapt 4 - 01 - G	G11	Trail Coordinator							
Chapt 4 - 01 - G	G12	Coordination with local NGO's							
Chapt 4 - 01 - G	G13	Summit Process							
Chapt 4 - 01 - G	G14	Action Plan							
Chapt 4 - 01 - G	G15	Trail System Management MOU							
Chapt 4 - 01 - G	G16	Mammoth Lakes Trail System MLTS							
Chapt 4 - 02 - N	N1	Nodal Typing							
Chapt 4 - 02 - N	N2	Naming of Recreational Nodes							
Chapt 4 - 02 - N	N3	Uniform Nodal Signage							
Chapt 4 - 02 - N	N4	Public Transit Access to Recreation Nodes							
Chapt 4 - 02 - N	N5	Summer Recreation Nodes							
Chapt 4 - 02 - N	N6	Winter Recreation Nodes							
Chapt 4 - 02 - N	N7	Future Nodal Designations							
Chapt 4 - 02 - N	N8	Updates to GIC Database							
Chapt 4 - 03 - MUP	MUP01	Near-Term MUP Projects							CONFIRM WITH PUBLI
Chapt 4 - 03 - MUP	MUP02	Complete the Main Path Loop							CONFIRM WITH PUBLI
Chapt 4 - 03 - MUP	MUP03	Near-Term MUP Projects							CONFIRM WITH PUBLI

Town of Mammoth Lakes - Trail System Master Plan (TSMP)
Current Status of Recommended Projects and Programs
Updated by MLTPA - December 02, 2015

Chapters/Sections	TSMP Citation	TSMP TITLE	No Work To Date	Work Initiated	Program Ready	Capital Proposed	Capital Complete	Maintenance	NOTES
Chapt 4 - 03 - MUP	MUP04	Near-Term MUP Projects							CONFIRM WITH PUBLI
Chapt 4 - 03 - MUP	MUP05	In-Town MUP Connectors							CONFIRM WITH PUBLI
Chapt 4 - 03 - MUP	MUP06	In-Town MUP Connectors							CONFIRM WITH PUBLI
Chapt 4 - 03 - MUP	MUP07	MUP's Outside the UGB							CONFIRM WITH PUBLI
Chapt 4 - 03 - MUP	MUP08	MUP's Outside the UGB							CONFIRM WITH PUBLI
Chapt 4 - 03 - MUP	MUP09	In-Town MUP Connectors							CONFIRM WITH PUBLI
Chapt 4 - 03 - MUP	MUP10	In-Town MUP Connectors							CONFIRM WITH PUBLI
Chapt 4 - 03 - MUP	MUP11	In-Town MUP Connectors							CONFIRM WITH PUBLI
Chapt 4 - 03 - MUP	MUP12	In-Town MUP Connectors							CONFIRM WITH PUBLI
Chapt 4 - 03 - MUP	MUP13	In-Town MUP Connectors							CONFIRM WITH PUBLI
Chapt 4 - 03 - MUP	MUP14	In-Town MUP Connectors							CONFIRM WITH PUBLI
Chapt 4 - 03 - MUP	MUP15	In-Town MUP Connectors							CONFIRM WITH PUBLI
Chapt 4 - 03 - MUP	MUP16	In-Town MUP Connectors							CONFIRM WITH PUBLI
Chapt 4 - 04 - XING	X1	Design of At-Grade MUP Crossings							
Chapt 4 - 04 - XING	X2	Specific Intersection & Mid-Block Crossings							
Chapt 4 - 04 - XING	X3	Grade Separated MUP Crossings							
Chapt 4 - 05 - BIKE	B	All Bike Lanes: NOTE							SEE CALTRANS FOR TYP
Chapt 4 - 05 - BIKE	B1	Near-Term Bike Lanes							
Chapt 4 - 05 - BIKE	B2	Bike Lanes on Major Streets							
Chapt 4 - 05 - BIKE	B3	Bike Lanes on Collector Streets							
Chapt 4 - 05 - BIKE	B4	Bike Routes: NOTE							SEE CALTRANS FOR TYP
Chapt 4 - 06 - INT	INT1	General (soft-surface/hard-surface Interface)							
Chapt 4 - 06 - INT	INT2	North Village							
Chapt 4 - 06 - INT	INT3	Canyon Lodge							
Chapt 4 - 06 - INT	INT4	Eagle Lodge							
Chapt 4 - 07 - PED	P1	Sidewalk to Major Roadway Ratio							
Chapt 4 - 07 - PED	P2	Sidewalks along Major Roads							

Town of Mammoth Lakes - Trail System Master Plan (TSMP)
 Current Status of Recommended Projects and Programs
 Updated by MLTPA - December 02, 2015

Chapters/Sections	TSMP Citation	TSMP TITLE	No Work To Date	Work Initiated	Program Ready	Capital Proposed	Capital Complete	Maintenance	NOTES
Chapt 4 - 07 - PED	P3	Sidewalks along Collector or Local Streets							
Chapt 4 - 07 - PED	P4	Mid-Block Pedestrian Connectors							
Chapt 4 - 08 - BP	BP1	Bicycle Parking Requirements							
Chapt 4 - 08 - BP	BP2	Bicycle Parking Designed by Local Artists							
Chapt 4 - 08 - BP	BP3	Subsidized Bicycle Parking Program							
Chapt 4 - 09 - SS	SS1	Snowcreek Meadow Trail							
Chapt 4 - 09 - SS	SS2	Summer Soft-Surface Trails outside the UGB							
Chapt 4 - 09 - SS	SS3	Shady Rest Winter Trails							
Chapt 4 - 10 - EDU	E1	Publish a Trail Guide for Mammoth Lakes							
Chapt 4 - 10 - EDU	E2	Annual Events/Calendar							
Chapt 4 - 10 - EDU	E3	Safe Routes to School							
Chapt 4 - 10 - EDU	E4	Trails-Related Education Programs							
Chapt 4 - 10 - EDU	E5	Trips for Kids							
Chapt 4 - 10 - EDU	E6	Establish a Trail Patrol							
Chapt 4 - 10 - EDU	E7	NGO's/Mammoth Trails							
Chapt 4 - 11 - ACC	A1	MUP & Trail ADA Assessment							
Chapt 4 - 11 - ACC	A2	Pedestrian ADA Assessment							
Chapt 4 - 11 - ACC	A3	Signage and Information							
Chapt 4 - 11 - ACC	A4	Pathway Surface Materials							