



# MAMMOTH TRAILS

A stylized, low-poly illustration of a mountain range. The mountains are rendered in various shades of green and teal. A large, bright yellow sun is positioned in the upper right corner. In the lower left corner, there is a small, dark green evergreen tree on a small hill. The background is a light blue gradient.

APRIL 25, 2024

- Mammoth Trails Overview
- Mammoth Lakes Trail System updates
- Partner Updates (that's you!)
  - Red's Meadow Road Construction
  - Crowley CSA Trails

# Who We Are

Mammoth Trails started in 2006 as a confederation of user groups convened to address issues among outdoor recreation user groups and provide a cohesive environment for smaller organizations to grow. Today, Mammoth Trails continues to be a collaborative effort to create and enhance outdoor recreation for our community, effectively and inclusively. As partners, allies and friends, Mammoth Trails offers the entire outdoor recreation community a space to share and discover local and regional happenings.



# What We Do

## DEMONSTRATE

Equity and  
inclusiveness  
Commitment to  
sustainable  
recreation

## COLLABORATE

Share information  
and resources  
Work together with  
an open mind

## RECREATE

Have fun!  
Go outside!





## Partners



**MAMMOTH LAKES  
RECREATION**



MAMMOTH LAKES TRAIL SYSTEM



And  
**YOU!**





*Trivia*

**What is one-way Mammoth Trails Members can Collaborate?**

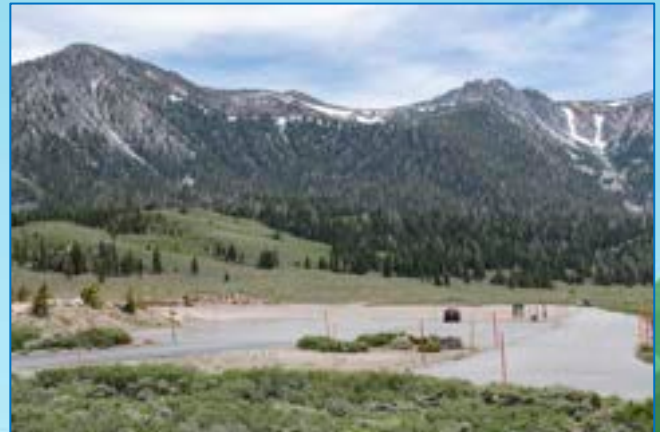
**Answer:**

- 1. Share information and resources**
- 2. Work together with an open mind**



**MAMMOTH LAKES  
RECREATION**

## **Sierra Nevada Conservancy Grant Updates**

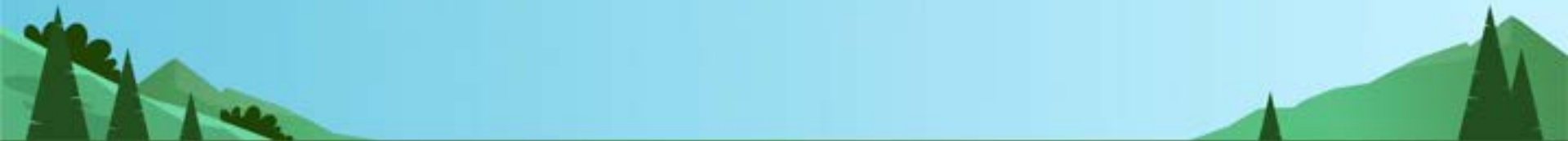






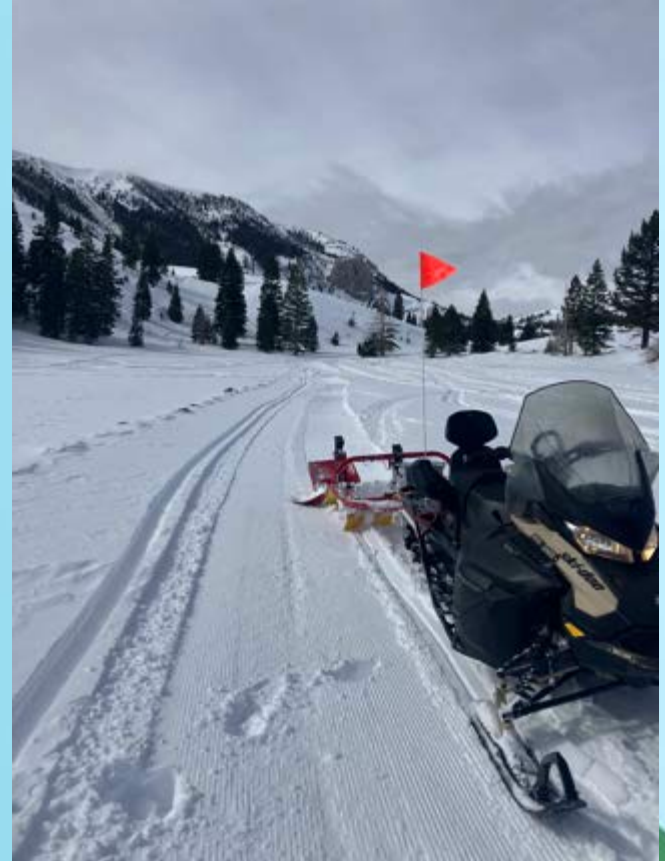
# TRAILS PROGRAM MANAGER UPDATES

Winter 23/24 Recap  
Upcoming Summer Projects



# WINTER GROOMING UPDATES

- **MMSA rented us a SkiDoo Expedition snowmobile to tow our Tidd-Tech Grooming Implements.**
- **It has worked very well for our purposes**
- **We have been able to trailer it back and forth from shady rest to sherwins with ease**

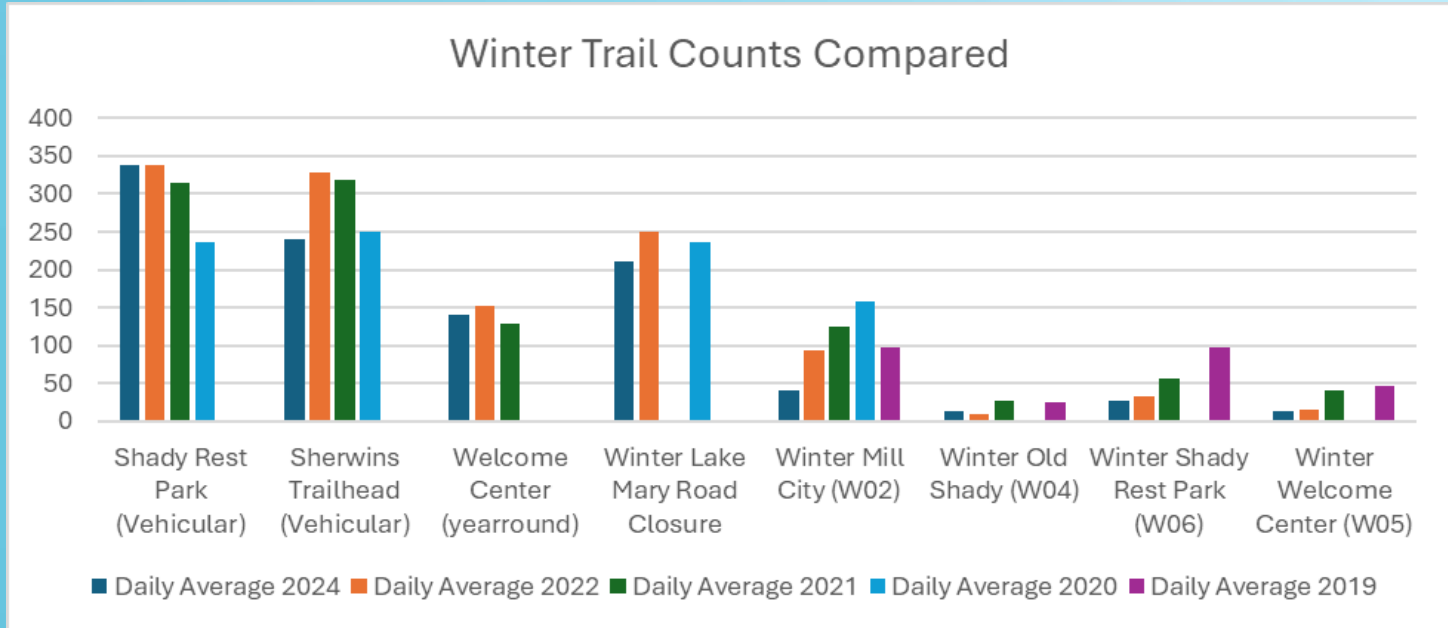


# WINTER GROOMING UPDATES

- We staffed up with 3 grooming staff this year
- Its has allowed us to groom at a good frequency maintaining a high level of service across both facilities



# 5.1 – WINTER TRAIL COUNTER DATA



# MAMMOTH CREEK TOML OWNED PARCEL REC PLAN

- **3 Interpretive Sign Panels – developed in partnership with Whitebark Institute**
- **1 mile of soft surface trail**
- **Small kid oriented pump track facility**



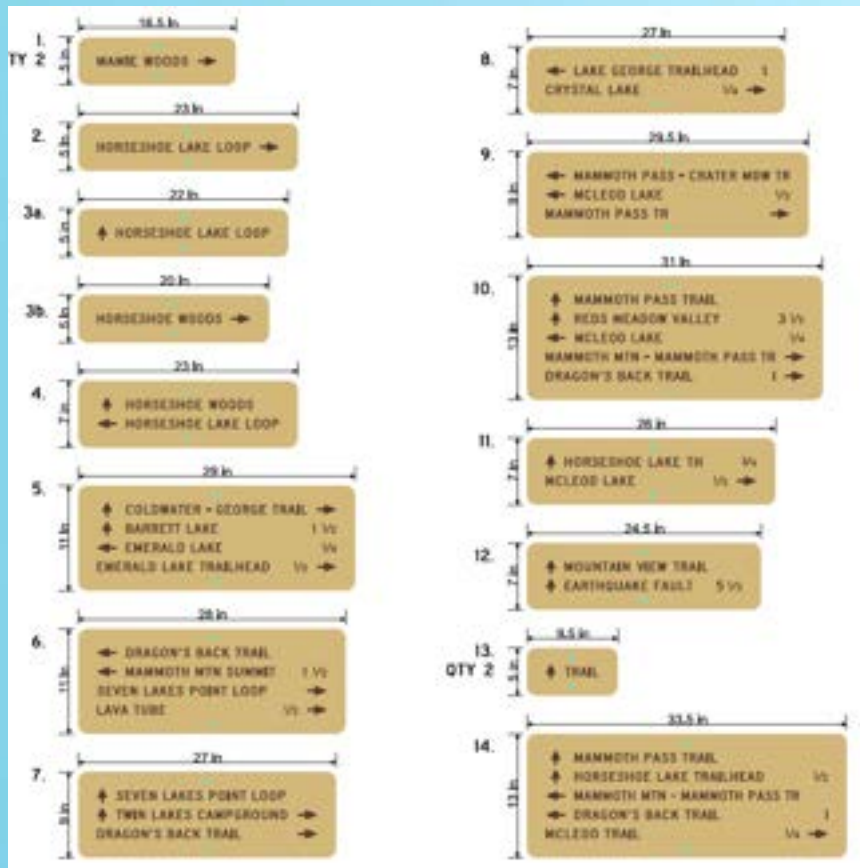
# SIGN REPLACEMENT

- 19 New 4/6 panels
- 33 6a signs
- 17 New 9a signs
- 24 New 4/6 maps for Lakes Basin
- 4 new 4/6 maps for new signs near Eagle Lodge



# SIGN REPLACEMENT

- 19 New 4/6 panels
- 33 6a signs
- 17 New 9a signs
- 24 New 4/6 maps for Lakes Basin
- 4 new 4/6 maps for new signs near Eagle Lodge



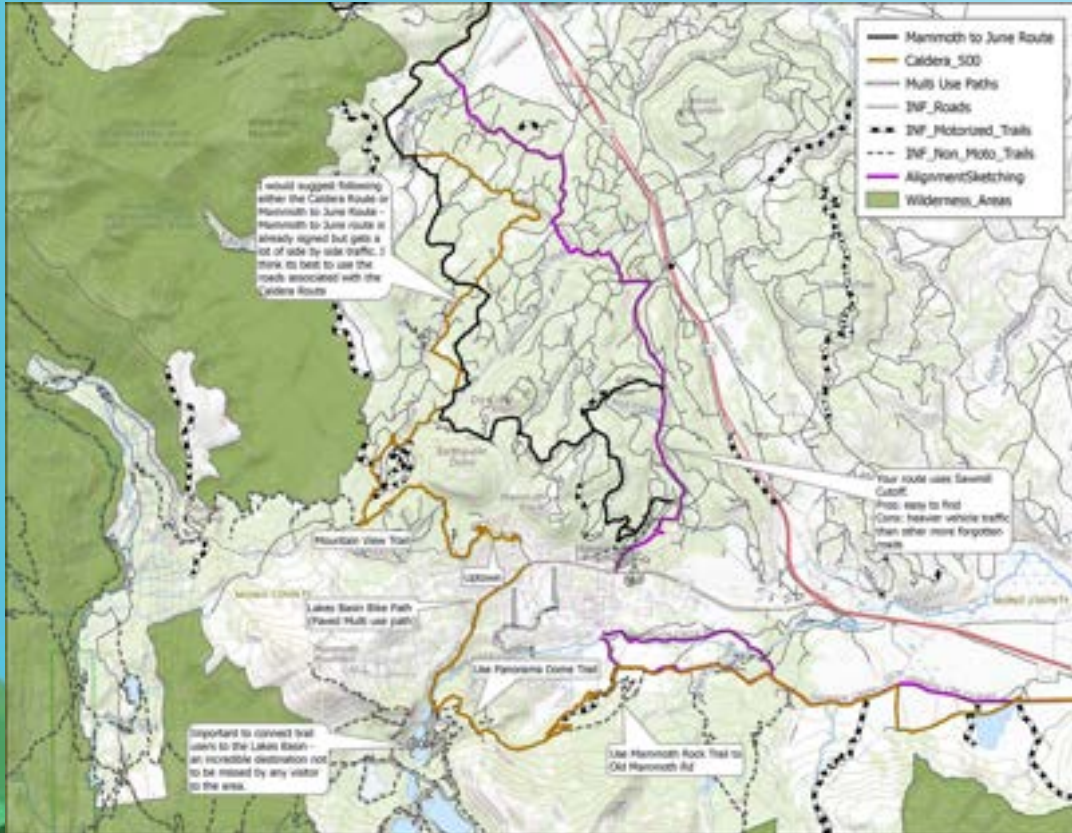
# PURSUE INCLUSION OF MINARET VISTA TRAIL TO USFS TRAIL SYSTEM

- 1.5 mile trail – very well used and established, follows sustainable design principles.
- Signed and for all intents and purposes open to public
- We would like to pursue adding this trail to the INF system/MLTS





# TOWNS TO TRAILS



- OOR has been commenting along the way
- Next opportunity for engagement is week of June 10
- [Townstotrails.org](http://Townstotrails.org)

A blue snowmobile is parked in a snowy field. The snowmobile is the central focus, with its front grille and headlights visible. The background shows a line of trees and a fence, suggesting a wooded or park area. The overall scene is bright and wintry.

*Trivia*

**What historically famous piece of equipment unfortunately must be retired from the MLTS?**

**Answer: The Nordoni**



# OUTDOOR RECREATION MANAGER UPDATES

TOML Ordinance  
Inyo NF and BLM OHV Grant



# ORDINANCE

- Establishes a formal definition of an e-Bike: Electric motor, fully operable pedals, & power output of no more than 750 watts.
- Institutes an enforceable 15 mph speed limit.
- Addresses the use of & defines e-Dirt Bikes on Town Multi-Use Pathways (MUPs), Sidewalks, and Trails.
- Addresses reckless driving or hazardous driving.
- Addresses operation while under the influence of alcohol or drugs.
- The goal of this ordinance is not to empower officers to ticket, rather to educate our visitors on appropriate use with the goal of increasing safety and enjoyment of our MUPs & Sidewalks.

E-Bike Side Note: The Lake Tahoe Basin Management Unit (LTBMU) is currently going through a NEPA process to allow Class 1 e-Bikes on non-motorized soft surface trails. The LTBMU estimates they could have a decision as early as August 1st, 2024.

# OHV GRANTS

The Inyo National Forest and Bureau of Land Management – Bishop Field Office are seeking public comment on their proposed OHV grant applications. The Office of Outdoor Recreation, in collaboration with the Mammoth Trail Committee (MTC), recommend the following actions.

- **LAUREL LAKES ROAD REHABILITATION**
- **DEVELOPMENT OF NEW OHV CAMPGROUNDS TO ACCOMMODATE RISING USE**
  - **RESTORATION OF EXISTING DISPERSED SITES IN HIGH USE AREAS**
  - **ADDITIONAL SIGNING OF ILLEGAL DISPERED CAMPING SITES**
- **EXPANSION OF EXISTING MOTORIZED SINGLE TRACK SYSTEM (CURRENTLY 12.2 MILES)**

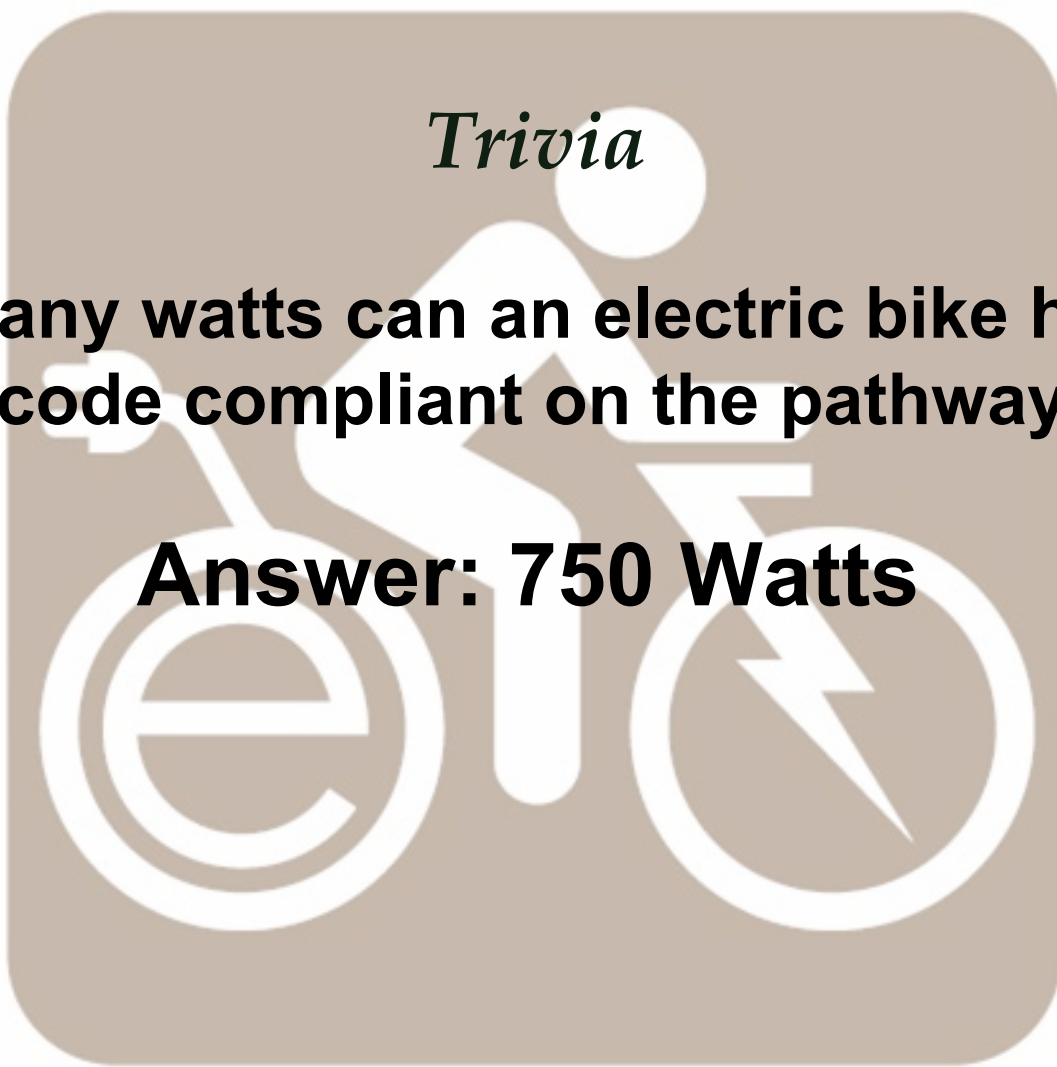
## **Mammoth Trails Committee (MTC) Recommendations from 4/11/2024 Meeting**

- MTC supports expansion of the Motorized Single-Track system to increase current connectivity with existing Motorized Single Track.
- Shady Rest Inyo Craters (SRIC) was referenced by MTC as a “pre-baked” plan to increase motorized single track opportunity.
- MTC recommended to not change the character of Laurel Lakes Road (it should remain a difficult trail to not necessarily be passable by all vehicles).
- Monitor roads during first winter snows and spring melt to effectively limit vehicles from accessing them to prevent resource damage.

*Trivia*

**How many watts can an electric bike have to be code compliant on the pathways?**

**Answer: 750 Watts**









# Summer of Stewardship

# Trail Days

- ❖ **June 1**
- ❖ **July 27**
- ❖ **September 21**



# Trail Days

2024  
SUMMER OF STEWARDSHIP

TRAIL  
DAYS

NATIONAL TRAILS DAY  
Saturday  
June 1, 9am-12pm



# Trail Days



Trail Days



**LEAVE  
NO TRACE**

---

**S P O T L I G H T**

**BONUS**  
**TRIVIA  
NIGHT**

At Mammoth Brewing Co.



Free  
Lake Daze  
Tasters!

Friday | May 31 | 6:30 p.m.

MAMMOTH LAKES TRAIL SYSTEM



# Wednesday Worknights

2024  
SUMMER OF STEWARDSHIP

TRAIL  
DAYS

WEDNESDAY  
WORKNIGHTS

5pm-7pm: Trail Work  
7pm-8pm: Food & Beverages

June 5 · July 3 · August 7 · September 4

# Trashy Thursdays

**TRASHY  
THURSDAYS**

**5-6 pm Every Thursday**





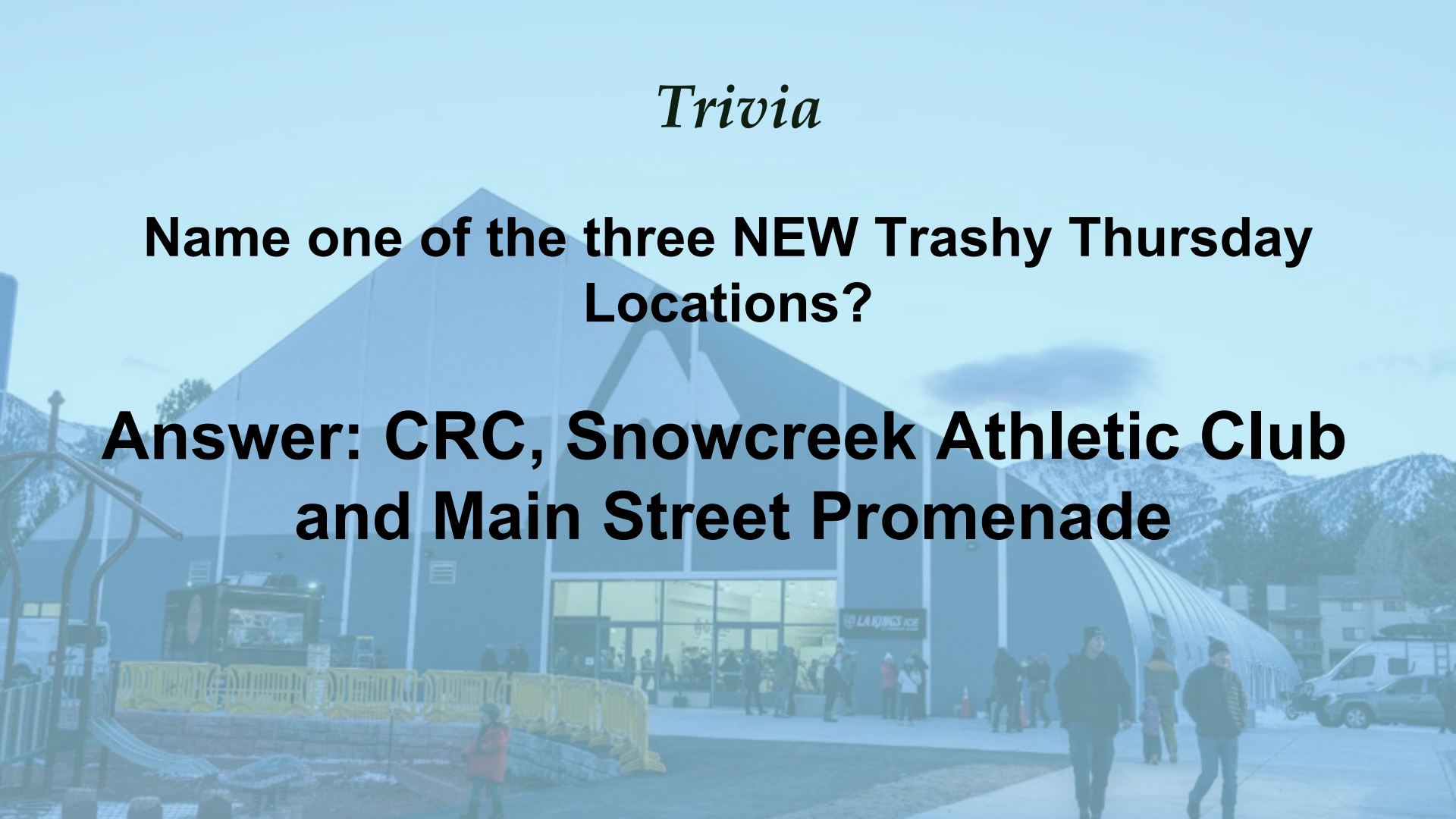
# Adopt a trail



# *Trivia*

**Name one of the three NEW Trashy Thursday Locations?**

**Answer: CRC, Snowcreek Athletic Club and Main Street Promenade**





# MAMMOTH TRAILS PARTNER UPDATES



INYO NF



# Reds Meadow Road Reconstruction Project

Chris Buehrer

Mammoth Ranger District, Recreation Officer

U.S. Forest Service - Inyo National Forest

MINARET  
VISTA →

INYO  
National  
Forest

DO NOT FEED  
CATTLE TO STAY CLOSED  
ALWAYS WEAR YOUR SEATBELT

ALL ASPECTS OF VEHICLE REMOVAL  
REST WITH VEHICLE OWNER



**Minaret Vista Entrance  
Station, June 2023**

Road was not opened until  
July 21, 2023



**Devils Postpile National Monument  
June 2023**





**Bottom of Starkweather  
Trail, looking north**

**June 2023**



BEDS MOUNTAIN SHUTTLE

**July 2017**





**May  
2018**





Culvert replacement near Agnew Wildflower Loop





**Late September  
2023**

# Project Purpose and Design

- Improve deteriorated condition of the road, facilitate emergency response, increase safety of users on the road.
- Over 60K vehicles each summer
  - 23,860 guests in FS campgrounds in 2022, ESTA shuttle bus varies 29K – 84K people per year
- **Upper 2.5 miles:**
  - Fully reconstructed.
  - Single lane, two-way road changed to a **full two lane roadway** (11-foot lanes with 1 foot shoulder = 24 foot paved top)
    - Existing width is 15-22 feet (average 16 feet)
- **Lower 5.8 miles:**
  - Rehabilitated with drainage improvements and asphalt paving (pulverize and repave), including reconstructing the entrance to DEPO, excavation/clearing of embankments to improve sight distance.
- \$32M FLAP Project work includes (visit: <https://highways.dot.gov/federal-lands/projects/ca/reds-meadow> for more info)
  - Excavation, rock excavation, soil nail walls, reinforced soil slopes, pipe culverts, guardrails, ditch reconditioning, drainage repairs, riprap, asphalt paving, full depth reclamation (pulverize and repave), erosion control, and revegetation.
  - Also, a 6-inch wide edge striping will be along the full length of the road; a safety upgrade over the standard 4 inches.
- NEPA was completed in 2018, design finalized in 2021, with contract awarded in 2023.
- Upon completion, the Town of Mammoth Lakes will be issued a Highway Easement Deed that grants right of way easement for the reconstruction, operation, and maintenance of the road.





# Soil Nailing

- This graphically depicts the primary reason for increased closures for 2024.
- The soil nail gun takes up the entire roadway during installation.
- Time consuming process.
- Daily 30 minute delays for public access in 2024 will push the project into 2026 and maybe longer.



# Current construction schedule

- Before June 7: Full Closure.
- June 7 – September 15:
  - OPEN Fridays at 9:00 AM until Sundays at 11:00 PM. Last [ESTA Shuttle Bus: www.estransit.com/routes-schedule/seasonal/reds-meadow-shuttle/](http://www.estransit.com/routes-schedule/seasonal/reds-meadow-shuttle/) @ 7:00 pm.  
*Exception: opening day of June 7, the road will open at 12:00 PM.*



- **Reds Meadow Road will be CLOSED 24 hours/day Sunday at 11:00 PM through Friday at 9:00 AM.**
  - **Independence Day Weekend**: OPEN Wednesday July 3 at 12:00 PM - Sunday July 7 at 11:00 PM.
  - **Labor Day Weekend**: OPEN Friday August 30 at 9:00 AM - Monday September 2 at 11:00 PM
- **September 16 → Winter closure (sometime in October)**  
Contractor may keep road closed to public Monday – Friday.  
Open Sat + Sun 9 a.m. – 7 p.m. with 30 minute delays.
- **Construction is expected to be through 2025. The schedule for 2025 is TBD.**

# Recreation

## • Campgrounds:

- Forest Service and Park Service campgrounds, except Reds Meadow CG, will remain closed in Reds Meadow Valley in 2024.
  - Reds Meadow CG open Fri / Sat / Sun. Closed Mon – Thurs. Must leave CG on Sunday.
  - Devils Postpile National Monument will provide interp programs on days when Reds Meadow Road is open to the public. More information is available at [www.nps.gov/depo](http://www.nps.gov/depo)

## • Wilderness permits:

- Entry/exit only permitted Friday – Sunday for:
  - Beck Lake, Fern Lake, Fish Creek, High Trail, John Muir Trail North of Devil’s Postpile, John Muir Trail South of Devil’s Postpile, Minaret Lake, River Trail and Shadow Creek.
- Entry/exit not permitted Monday - Thursday.
- Leaving your personal vehicle:
  - You are permitted to leave your vehicle overnight at a trailhead parking lot if you obtain a wilderness entry/exit on open days (Friday – Sunday).
    - For example, you may enter on a Sunday and exit on a Friday.
  - No matter what trailhead you are entering from (including any National Park Service lands), remember that your vehicle will not be allowed to leave Monday – Friday morning.
- Please print a copy of your permit and leave on the dashboard of your vehicle.



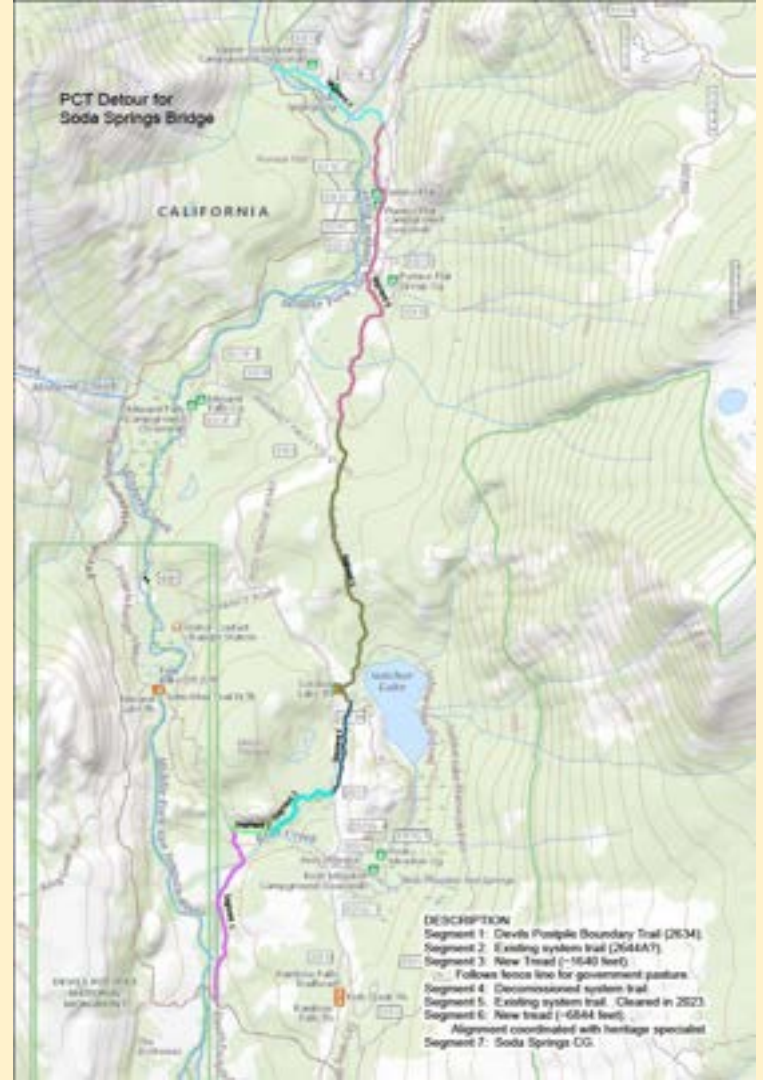
# Recreation, continued...

- Restrooms:
  - All Forest Service restrooms normally provided in Reds Meadow Valley should be regularly serviced and available for use.
  - Restrooms and associated plumbing at DEPO may be under construction 2024-25. Water may not be available within park.
- Emergency Services:
  - Response times to backcountry emergencies are already delayed and not always guaranteed.
  - Response times will be delayed even more due to the construction project; whether during the week to move equipment out of the way for traffic to get by, or, on the weekends with the extremely high traffic expected.
- Starkweather Trail:
  - Will be open.



# PCT Detour

- Bridge near Upper Soda Springs over the San Joaquin River destroyed in winter of 22-23.
  - 5+ years to replace?
- Detour is the preferred to walking the road.
- Combination of current system trail, decommissioned system trail, and new trail construction.
- Existing trail has been utilized to the greatest extent possible.
- Segments 3 and 6 represent 1.6 miles of new trail construction.
- Funding and implementation - Interagency PCT program as well as the Pacific Crest Trail Association.



# Inyo National Forest News



Send an email to:

[Lisa.cox@usda.gov](mailto:Lisa.cox@usda.gov) to be added to News Release listserve. This is *all* news about the forest, not just Reds Meadow.

Check our website at:

[www.fs.usda.gov/news/inyo/news-events](http://www.fs.usda.gov/news/inyo/news-events)

Follow us on Facebook @InyoNF

[www.fs.usda.gov/goto/inyo/alerts-notices/reds-meadow-road-reconstruction](http://www.fs.usda.gov/goto/inyo/alerts-notices/reds-meadow-road-reconstruction)



CSA



# CSA1 Trails

CSA1 is a dependent district of Mono County Government servicing CSA1 residents (Long Valley, McGee Creek, Crowley Lake, Aspen Springs, Toms Place/Sunny Slopes)

## **Goals**

- Support and advance new multi-use trails for all non-motorized users
- Build 50 miles of new trails within CSA1 Boundaries
- Utilize existing public facilities (parks, campgrounds, trailheads, parking areas) as access nodes and tie trails into these facilities

## **Financial**

- CSA1 will pay for trail design, permitting, construction & trail on-going maintenance



# CSA1 Trails

## Trail Planning Efforts

- **Short Term (1-2 years)** – Toms Place connector / Hilton BLM trails (existing 2-3 miles)
- **Mid Term (2-10 years)** – Additional trails above BLM campground (new 5-12 mile network)
- **Long Term (10-20 years)** – 7,600' contour trail from Sherwin Creek to Toms Place / French Camp (new 20-25 mile network)

# CSA1 Trails

## Toms Place to Lower Rock Creek connector



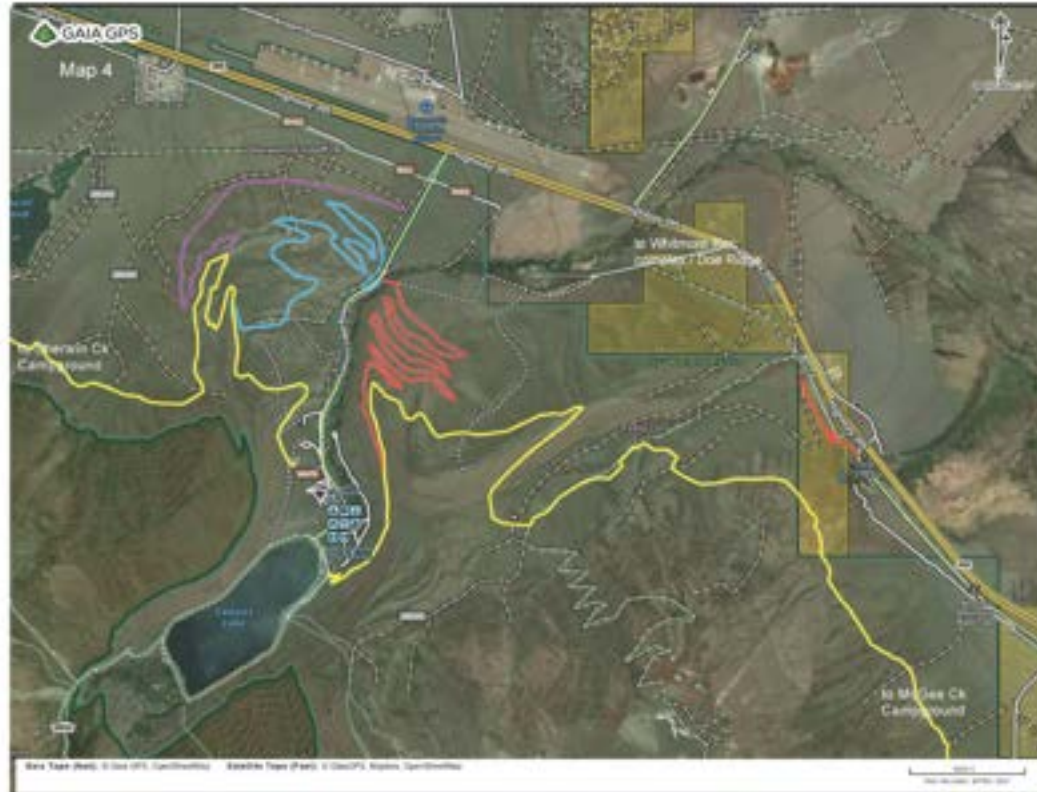
# CSA1 Trails

Mid Term expansion Crowley Lake BLM campground



# CSA1 Trails

7,600 foot trail in yellow – Convict Lake Area - conceptual



# More Info



Instagram - eastsidetrails

Email address:

[eastsidetrailassociation@gmail.com](mailto:eastsidetrailassociation@gmail.com)

Join us!  
Help us spread the  
word.



CSA1 webpage

<https://monocounty.ca.gov/csa1>

MONO CO



# Mono County Recreation Updates

**Adopt A Trail** has 12 new sites! Several more **Tangle Free Waters** sites coming soon!

## **CSA1 Trail Connector System – South County**

Lower Rock Creek → Toms Place & Hilton Ck TH → Crowley Lake BLM Campground

**Next step:** Submitting proposals to Inyo National Forest and BLM

## **Grant Projects**

\*Continued monitoring of dispersed campsites

\*\*Expansion of **Camp Like a Pro campaign** – new video coming soon! 😊

\*Continued restoration to close illegal OHV routes

\*New informational kiosks to be installed throughout the region

\*Monitoring and restoration on BLM lands in Long Valley and Travertine Hot Springs

# MAMMOTH TRAILS PARTNER UPDATES







## *Trivia*

**What is the name of the NEW Colab beer between MBC, MLR, and the MLTS?**

**Answer:  
Lake Daze Hazy IPA**



Cheers!

