



10th ANNIVERSARY

★ 2012 – 2022 ★

MAMMOTH TRAILS

RECREATION FOR ALL




PARTNERS IN ACTION

“Building the Mammoth Lakes Trail System 2006-2012”



October 20, 2022

November 4, 2006 - Public Meeting and Strategic Conference



Mammoth Lakes Trails and
Public Access presents

A VISION FOR TRAILS AND PUBLIC ACCESS IN MAMMOTH LAKES

Saturday, November 4, 2006
Little Eagle Lodge
Mammoth Lakes, California


6:30 P.M. Materials Preview
7:00 P.M. Presentation
Jeff Olson, Senior Planner
Alta Planning + Design
8:30 P.M. Public Forum

A nationally recognized design firm, Alta Planning + Design
has master planned trail systems for Truckee, California,
Mt. Hood, Oregon, and Jackson Hole, Wyoming.

Join us for an evening of interactive discussion
on the future of trails and public access
in Mammoth Lakes!

mltpa.org

with the generous support of:



November 4, 2006 - Public Meeting and Strategic Conference

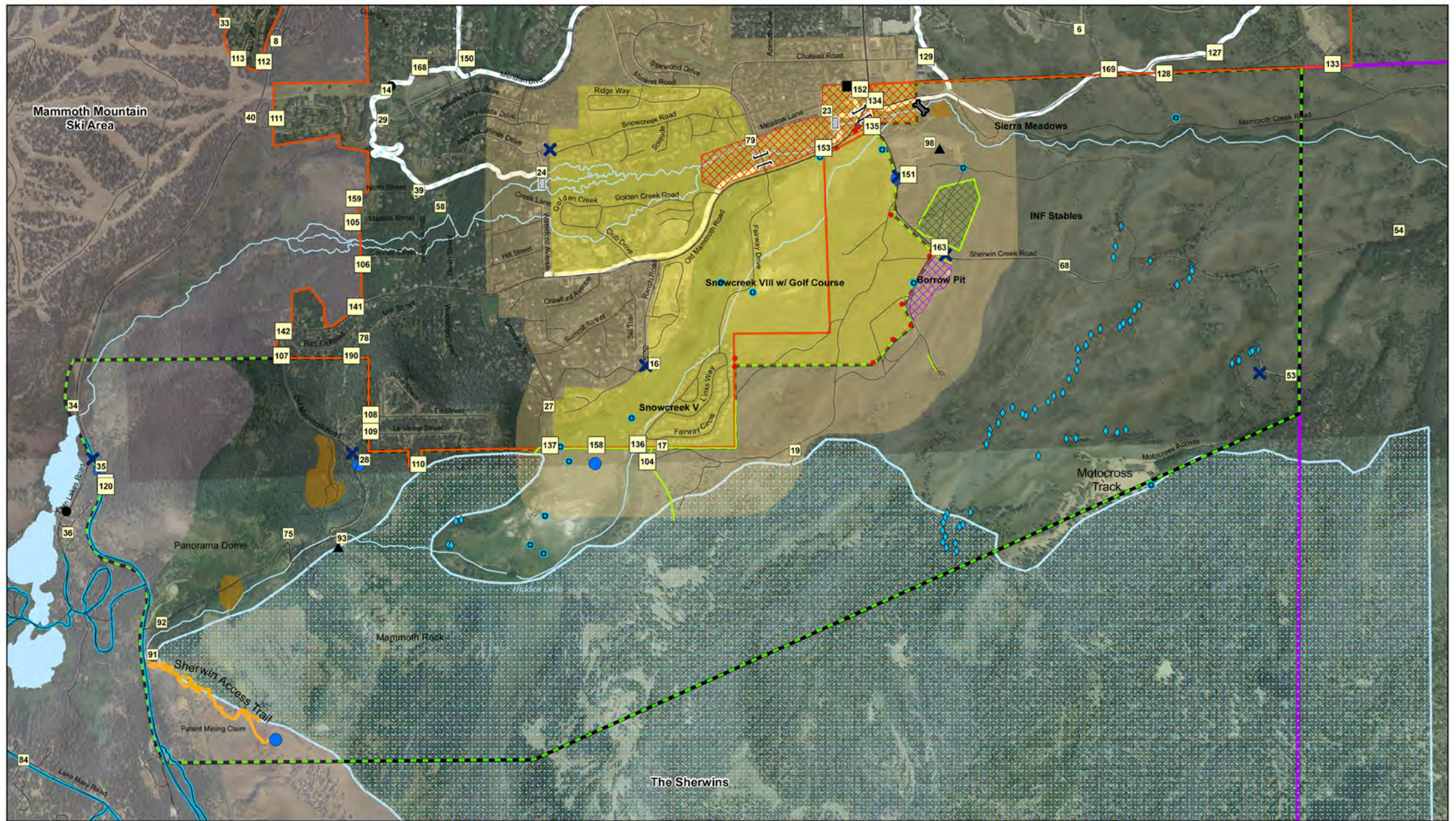


November 4, 2006 - Public Meeting and Strategic Conference

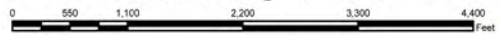


Conflict at the Ranch Road Gate - 2006





SHERWIN WORKING GROUP - JUNE 16 MEETING
Winter Existing Conditions



MUP SCALE: 1:4,400
 Aerial Background: NADP 2005

Winter Recreation Nodes

- Points
- Trailheads
- Parks
- GIC Points
- Gates/Barriers/Closures
- Existing Tunnels
- Backcountry Egress/Access Points
- Bridges

Paved Multi-Use Paths

- Snow Removed MUP
- Groomed MUP
- Snow Covered

Winter Use

- Groomed Non-Motorized
- Snowshoe Trail
- Use Trails
- Backcountry Area
- OSV Restricted Area

Winter Use

- Parks/Open Spaces
- Cultural Historic Areas
- Town Urban Growth Boundary
- Town Municipal Boundary
- SATSS Study Area

Winter Use

- Borrow Pit
- INF Stable
- Snowcreek District Area
- Snowcreek Area Influence
- East OSCC NDP
- Ranch Rd Easement

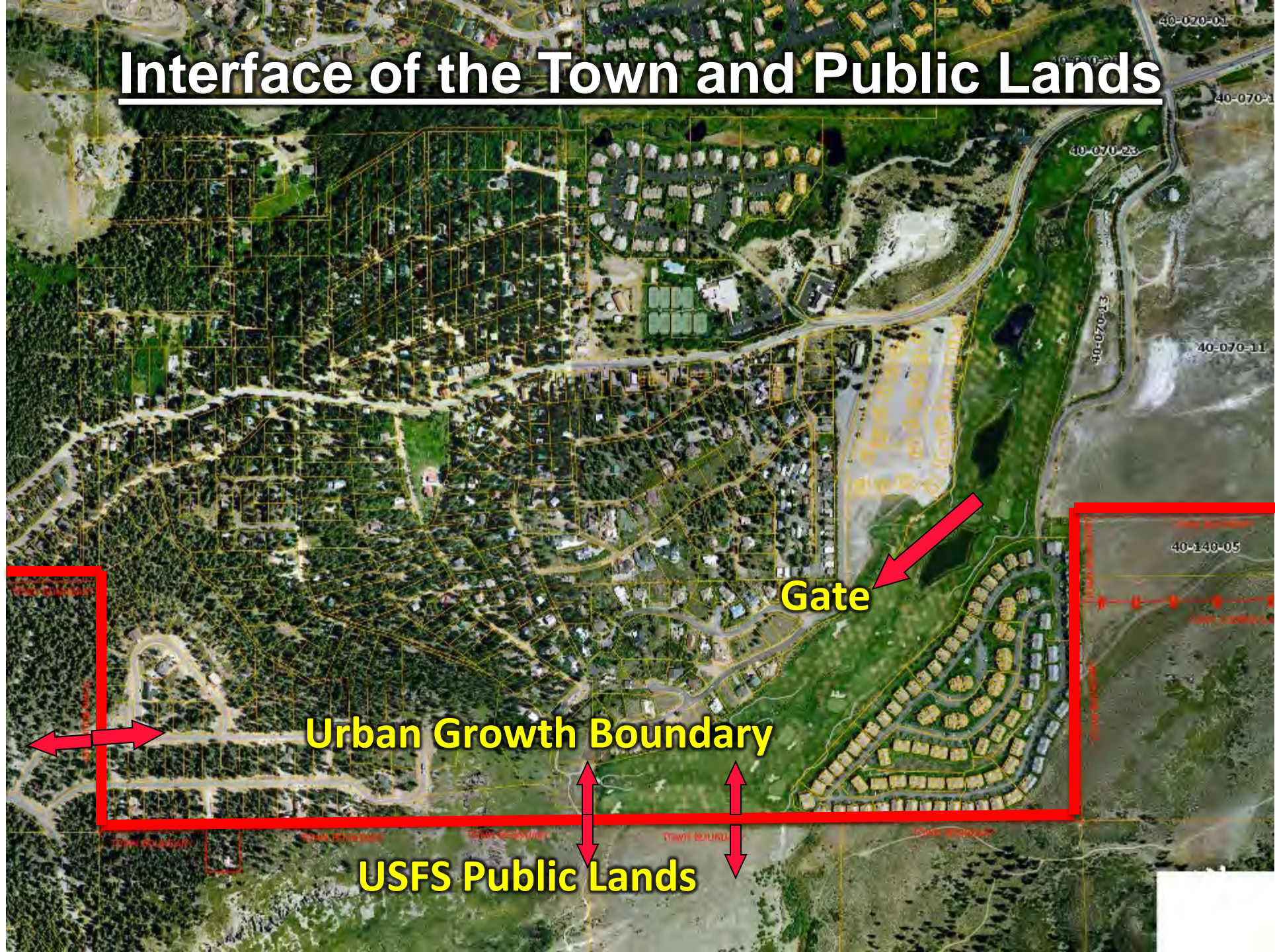
Winter Use

- Blue Diamond Signs
- MCWD Sherwin Area Wells
- Land Monument Survey
- Paved and Dirt Roads
- Fences



Disclaimer: The Forest Service uses the most current and complete data available. GIS data and product accuracy may vary. This may be due to data source or errors in data collection, incomplete data being created or revised, etc. Using GIS products for purposes other than those for which they were created, may result in inaccurate or misleading results. The Forest Service reserves the right to correct, update, modify, or replace GIS products without notification. For more information, contact the National Forest GIS Center at (800) 875-2054.

Interface of the Town and Public Lands

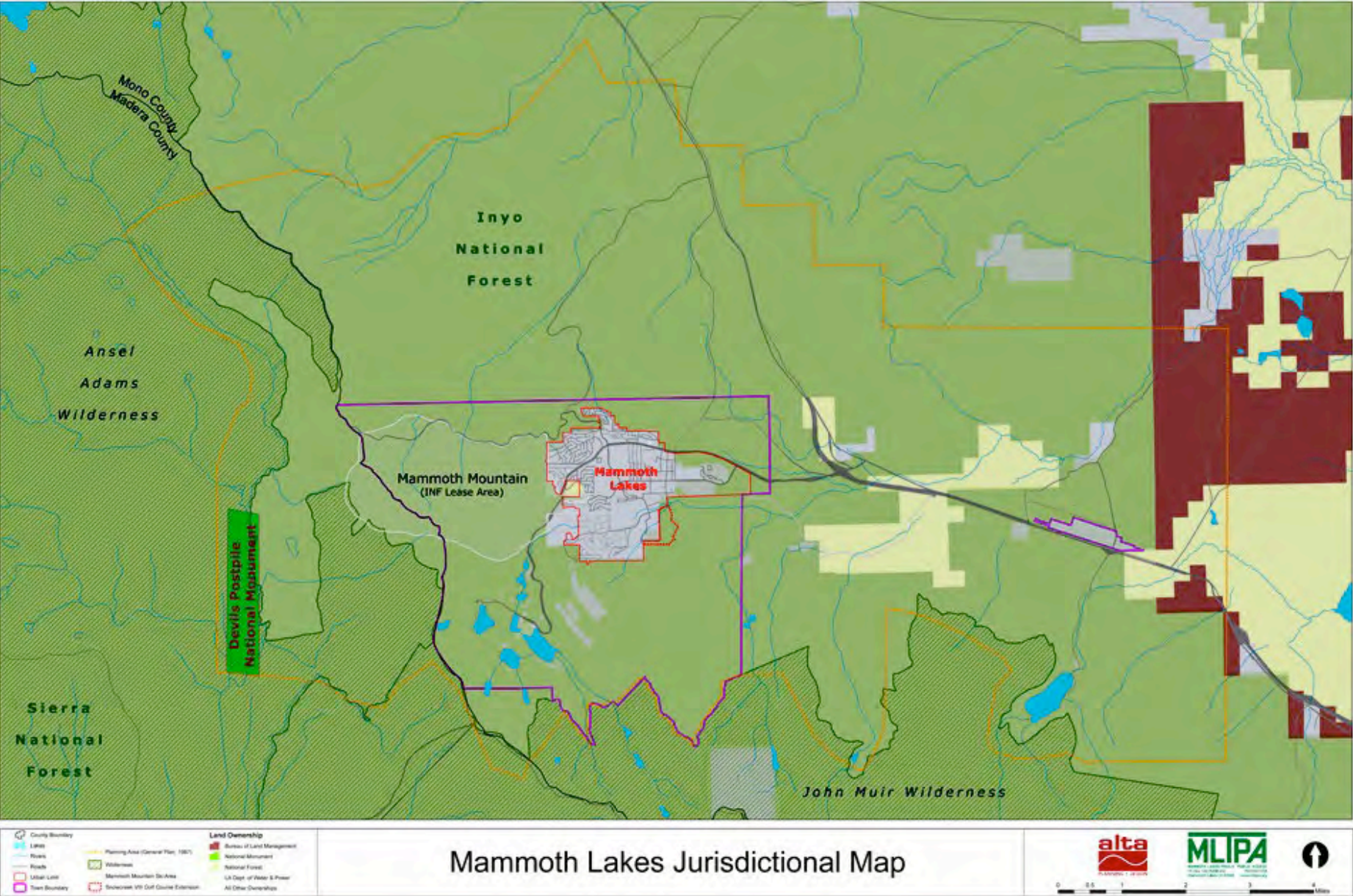


Gate

Urban Growth Boundary

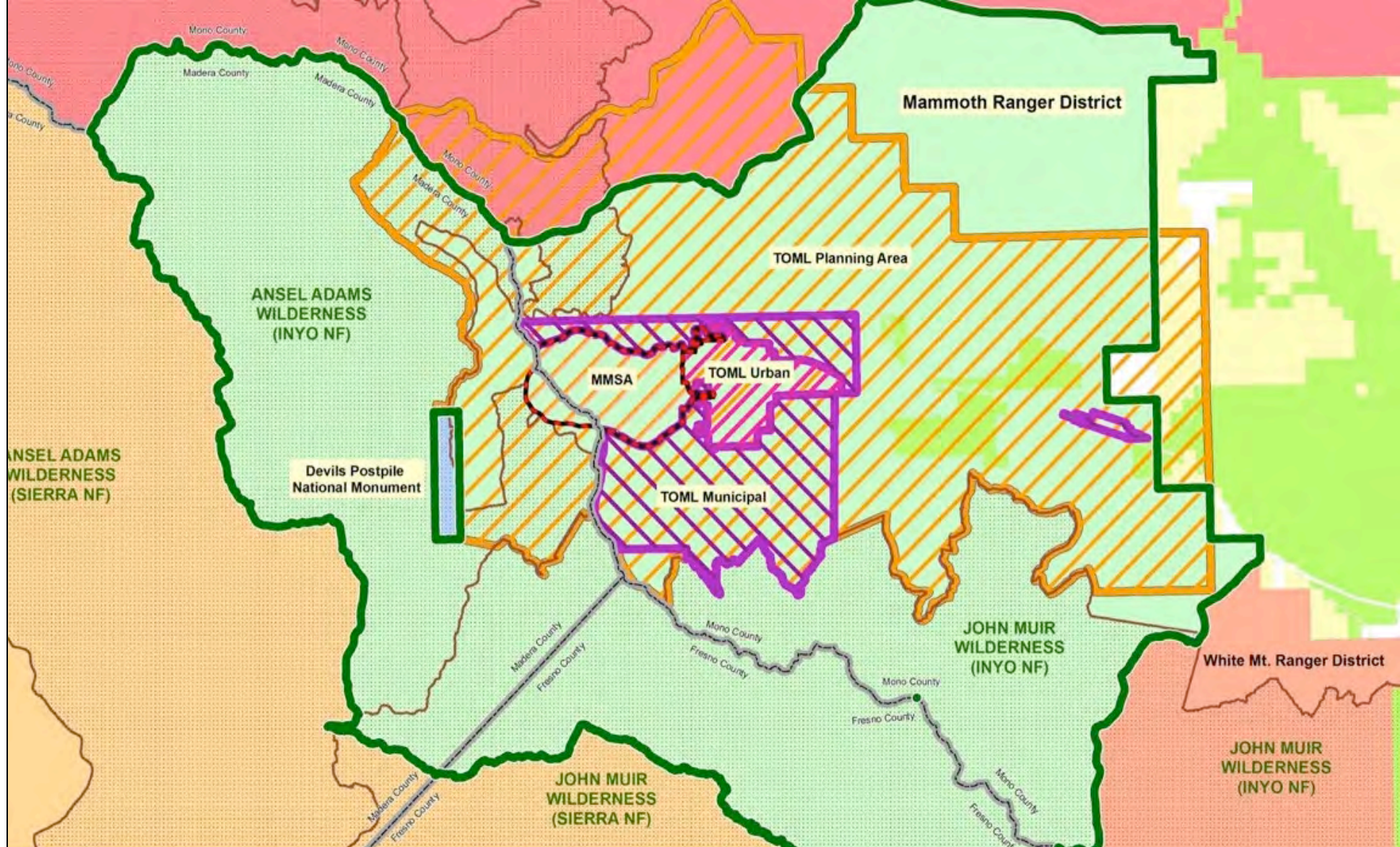
USFS Public Lands

Mammoth Lakes and Public Lands



Mammoth Lakes Jurisdictional Map





**The Mammoth Region Recreation Council
Identified Jurisdictions - 10/06/09**

- | | |
|--|--|
|  Bureau of Land Management |  TOML Urban Growth Boundary |
|  City of L.A. DWP |  TOML Municipal Boundary |
|  California County Boundaries |  Wilderness Area |
|  Mammoth Mountain Ski Area |  TOML Planning Area |



0 2 4 Miles

Map Scale: 1" = 2 Miles



December 20, 2006 - MLTPA Action Plan



March 6, 2007 - Trails Planning Task Force

TOML TOURISM & RECREATION DEPARTMENT/MLTPA MASTER-PLAN TASK FORCE

Meeting #1: SCOPING AND DELIVERABLES
March 6, 2007,
Tourism & Recreation Depa

AGENDA ITEM #1: WELCOME AND INTRO

AGENDA ITEM #2: TASK FORCE GOALS, O

Meeting #1: Scoping and Deliver
Meeting #2: Teams and Tasks, M
Meeting #3: Chronology and Bud
Meeting #4: Draft Proposal Pres

AGENDA ITEM #3: MLTPA BACKGROUND

MLTPA Mission Statement:

"MLTPA will plan, steward, interpret
season trails and public access in Ma
Eastern Sierra region, while protectin
collaboratively engaging government
businesses, and concerned citizens, a
be involved, connecting people to na

November 2006 Strategic Confer
GIS Inventory Contract

AGENDA ITEM #4: UNDERSTANDING TH

Geographic Scope: The current la
functionality, and how we envisio
Jurisdictional Scope: Who is resp
Planning Area, and how do they
Trails & Public Access Stakehold
the Planning Area, and how?
Trails & Public Access Master-Pla

participate in the actual on-the-ground planning of the Planning Area?

Community Scoping and Tools: How will the Master-Planning Team
identify and engage the community throughout the planning process?

Pending Concerns for Trails and Points of Public Access: How will the
area's ongoing development, and its related Town policies, impact trails
and public access?

TOML TOURISM & RECREATION DEPARTMENT/MLTPA MASTER-PLAN TASK FORCE

Meeting #1: SCOPING AND DELIVERABLES
March 6, 2007, 2-3:30 p.m.
recreation Department conference room

ME AND INTRODUCTIONS

FORCE GOALS, OBJECTIVES, AND SCHEDULING

g and Deliverables, March 6, 2007
and Tasks, March 13, 2007
ology and Budget, March 20, 2007
Proposal Presentation, April 3, 2007

BACKGROUND AND HISTORY

Statement:

ward, interpret, promote, and sustain a system of four-
E access in Mammoth Lakes and the immediate
while protecting its natural resources. We do this by
ng government agencies, nonprofit organizations,
ned citizens, and creating a forum for all trail users to
g people to nature."

Strategic Conference and Public Meeting
tract

UNDERSTANDING THE SCOPE OF THE MASTER PLAN

The current lay of the land, in both size and
ow we envision it for the future

e: Who is responsible for the lands contained in the
how do they interact?

Less Stakeholders: Which groups have an interest in
and how?

Less Master-Planning Team: Who will lead and

participate in the actual on-the-ground planning of the Planning Area?

Community Scoping and Tools: How will the Master-Planning Team
identify and engage the community throughout the planning process?

Pending Concerns for Trails and Points of Public Access: How will the
area's ongoing development, and its related Town policies, impact trails
and public access?

Trails and Public Access Master Planning Task Force

Meeting 1: Scoping and Deliverables
March 6, 2007

MLTPA/Town of Mammoth Lakes
Tourism and Recreation Department

March 6, 2007 - Trails Planning Task Force



June 20, 2007 - MLTPA Planning Proposal



PLANNING PROPOSAL EXECUTIVE SUMMARY

Mammoth Lakes Trails and Public Access (MLTPA) presents to the community of Mammoth Lakes a proposal for planning that will ensure the integration and stewardship of surrounding public lands with the Town of Mammoth Lakes. Recent characterizations by the Town Manager as to the critical nature of the current development environment and its potential implications for the future of the community must be taken as a call to action. Trails and public access planning will benefit current residents and visitors, our environment, our economy, and the many future generations who will be discovering the magic of Mammoth Lakes.

Program Summary

- The planning process will be a multi-jurisdictional effort administered by MLTPA and will include comprehensive outreach to the Mammoth Lakes community.
- MLTPA will contract with nationally recognized expert planning consultants: one for an update of the *Mammoth Lakes Trail System Plan (1991)* for territory within the Urban Growth Boundary (UGB), and a second for the balance of territory between the UGB and the Town of Mammoth Lakes Planning Area boundary.
- Final planning documents will be submitted to appropriate jurisdictional agencies for consideration, approval, adoption and implementation.
- Extensive volunteer and in-kind donation opportunities will foster community involvement and ownership.
- Multiple funding partners will ensure program success.
- Program time frame: 12 months

Program Goals

- Generate a Trails and Public Access Master Plan for territory within the UGB; generate a Trails and Public Access Concept Plan for the balance of territory between the UGB and the Town of Mammoth Lakes Planning Area boundary.
- Develop comprehensive and efficient data protocols, management and communication, including the MLTPA Data Library as a source for multi-jurisdictional data coordination.
- Develop a consistent signage and wayfinding program for appropriate inclusion as part of a larger and comprehensive signage and wayfinding system.
- Identify and catalog historic, cultural and environmental assets for connectivity assessment.
- Establish a two-way communication forum with the development community through "The Developers' Forum," a joint effort with the Mammoth Lakes Chamber of Commerce.
- Establish a stakeholder and public information forum for trail users through "Mammoth Trails" as developed with the Tourism and Recreation Commission Ad Hoc Committee (2006)

PO Box 100 PMB #432 - Mammoth Lakes, CA 93546 - 760 934 3154 - mltpa.org



PLANNING PROPOSAL DELIVERABLES SUMMARY

FIRST STEPS

Start-up and initial expenses; generation of Initial High-Level Assessment identifying potential trail corridors and critical points of public access, for use by stakeholders.

Consultant: Within UGB Initial Organization Initial High-Level Assessment 4 Work Days	Consultant: Outside UGB Initial Organization Initial High-Level Assessment 2 Work Days	MLTPA Tasks + Admin Initial Organization Initial Project Administration
--	---	---

TEAM ORGANIZATION

Team members' participation in quarterly, monthly, and biweekly team meetings over 12-month planning period; consultants' travel expenses to and from Mammoth Lakes, and on-site expenses; reimbursable office and project expenses.

Consultant: Within UGB 25 Team Meetings 4 (1) Week Long Trips - Outreach 2 (1) Week Long Trips - Field Work Office Expenses Production Expenses 17.5 Work Days	Consultant: Outside UGB 25 Team Meetings Multiple Trips 103 Work Days on Site Office Expenses Production Expenses 15 Work Days	MLTPA Tasks + Admin Project Administration Team Meetings Logistics Team Meetings Documentation
--	--	---

PUBLIC PARTICIPATION

Team members' participation in joint public meetings, joint and discrete meetings with stakeholders and user groups, and joint and discrete charettes, open houses, field trips, and jurisdictional/agency meetings; meeting logistics, promotion and documentation; project website; comprehensive public outreach; analog and online surveys; Mammoth Trails user forum; outreach and media relations.

Consultant: Within UGB (4) Public Meetings (4) Community by District Meetings (6) Community Stakeholder Meeting (10) Open Houses (10) Field Trips (5) Jurisdictional/Agency Meetings 30 Work Days	Consultant: Outside UGB (4) Public Meetings (4) User Group Meetings (2) Charettes (10) Open House (10) Field Trips (5) Jurisdictional/Agency Meetings 37 Work Days	MLTPA Tasks + Admin Project Administration Meetings Logistics + Promotion Meetings Documentation Comprehensive Public Outreach Project Website Online/Analog Surveys Mammoth Trails User Forum Media Relations
--	---	--

PO Box 100 PMB #432 - Mammoth Lakes, CA 93546 - 760 934 3154 - mltpa.org

DATA COLLECTION

Compilation, verification, and distribution of available and existing planning data to team members; data integrity management by local GIS consultant; survey development; field data collection; volunteer coordination; MLTPA GIS assimilation; field condition analysis and verification.

Consultant: Within UGB Existing Local Data Assimilation MLTPA GIS Assimilation Survey Development 15 Work Days	Consultant: Outside UGB Existing Local Data Assimilation MLTPA GIS Assimilation Info From Stakeholders Needs, Habits, Equipment Survey Development Identify User Patterns and Issues Census Data: Safety Land Use and Development Destinations and Access Ownership/Special Populations Map Areas Existing Trail Compatibility Field Verity Map Routes/Corridors Access Route Conditions Pedestrian Corridors in Town 14 Work Days	MLTPA Tasks + Admin Project Administration MLTPA Data Library GPS/GIS Data Gathering Volunteer Coordination Local Data Coordination by Data Management Technology Project Data Coordination by Data Management Technology
--	--	---

DATA ANALYSIS

Opportunities and constraints models; demand and benefit models; refinement of Initial High-Level Assessment; field data and conditions analysis.

Consultant: Within UGB Opportunities and Constraints Demand and Benefits Model Refined High-Level Assessment Analyze Survey Response Data 15 Work Days	Consultant: Outside UGB Viewshed + Land Form Analysis Benefits Management Model Refined High-Level Assessment Determine In Town Open Space Analyze User Experience Levels Sustainable Trail Standard Sustainability of Popular Routes Matrix of Compatible Uses Opportunities and Constraints 30 Work Days	MLTPA Tasks + Admin Project Administration
---	--	---

REPORTING

Consistent and timely reporting on planning process to partners and community.

Consultant: Within UGB -	Consultant: Outside UGB -	MLTPA Tasks + Admin Project Administration Project Reporting Project Distribution
-----------------------------	------------------------------	--

PO Box 100 PMB #432 - Mammoth Lakes, CA 93546 - 760 934 3154 - mltpa.org

NETWORK IDENTIFICATION

Production and presentation of concept plans; identification and mapping of projects; potential-facilities identification; connections identification.

Consultant: Within UGB Concept Plan Access and Trail Connection 100 Potential Projects GIS Map Proposed Projects 22.5 Work Days	Consultant: Outside UGB Conceptual Planning Zones User Specific Facility Concepts Future Connections Materials - Network ID 16.5 Work Days	MLTPA Tasks + Admin Project Administration
--	---	---

INFRASTRUCTURE

Comprehensive (within and outside UGB) signage and wayfinding recommendations; comprehensive (within and outside UGB) design guidelines.

Consultant: Within UGB Signage and Wayfinding Design Guides 20 Work Days	Consultant: Outside UGB Signage and Wayfinding Design Guides 8 Work Days	MLTPA Tasks + Admin Project Administration
---	---	---

IMPLEMENTATION

For within the UGB only: identification of funding opportunities; agency responsibility identification; recommendations for implementation phasing.

Consultant: Within UGB Funding Opportunities Agency Responsibility Matrix Project Phasing 7.5 Work Days	Consultant: Outside UGB -	MLTPA Tasks + Admin Project Administration
---	------------------------------	---

MASTER PLAN

Joint presentation of draft and final master plan (within UGB) and draft and final concept plan (outside of UGB); joint presentation of accompanying materials; distribution to community; presentation of plans to agencies and jurisdictional partners; presentation to community for adoption.

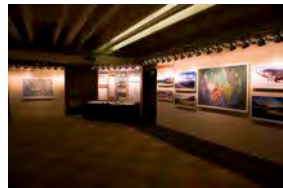
Consultant: Within UGB Stakeholder Presentations Operations and Maintenance Design Guidelines Signage and Wayfinding Costs and Funding Benchmarking Agency Presentations Final Product Delivery	Consultant: Outside UGB Stakeholder Presentations Operations and Maintenance Design Guidelines Signage and Wayfinding Costs and Funding Benchmarking Agency Presentations Final Product Delivery	MLTPA Tasks + Admin Project Administration Public Presentation Plan Distribution
---	--	---

PO Box 100 PMB #432 - Mammoth Lakes, CA 93546 - 760 934 3154 - mltpa.org





November 1-4, 2007 - CAMP: SUMMER



The MLTPA Foundation presents

CAMP: SUMMER

Summer Recreation and Trails
Workshop in Mammoth Lakes

**PARTICIPATE IN CAMP: CONCEPT AND MASTER
PLANNING FOR TRAILS AND PUBLIC ACCESS**

**November 1-4, 2007
Canyon Lodge in Mammoth Lakes**

All Weekend: Exhibits, Hikes, Community and User Group
Meetings, Trails Network Workshops, and "Mammoth Trails"

OPENING NIGHT
Thursday, November 1, 2007
7:00 PM at Canyon Lodge
Reception and Program Overview

FEATURED PRESENTATION
Saturday, November 3, 2007
7:30 PM at Canyon Lodge
"Signage and Wayfinding in Mammoth Lakes: The Essential
Steps to a Successful Program" Corbin Design

Schedule and Event Registration at www.mitpa.org
MLTPA: 760 934 3154
All events are free and open to the public
The Mammoth Lakes Trails and Public Access Foundation (MLTPA) is a public benefit 501(c)(3) corporation

CAMP: Winter coming February 2008

Photo by Stephen H. Willard, Old Mammoth, No. 963 (detail), © Stephen H. Willard Photography Collection & Archive, courtesy Palm Springs Art Museum



December 6, 2007 - Sierra Nevada Conservancy Funding



December 27, 2007 - MLTPA Five-Year Strategic Plan



Mammoth Lakes Trails and Public Access

MLTPA Five-Year Strategic Plan

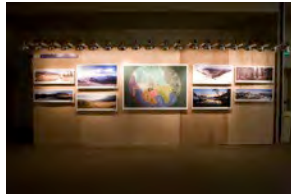
Final Draft
December 27, 2007



PO Box 152 76684-0152
Mammoth Lakes, CA 95545
760 934 2154
mltpa.org



February 7-12, 2008 - CAMP: WINTER



The MLTPA Foundation presents

CAMP: WINTER

Winter Recreation and Trails
Planning Workshop

PARTICIPATE IN CAMP:
The Concept and Master
Planning process for
trails and public access
in Mammoth Lakes

Play Your Part in the Vision!

February 7-12, 2008
Main Lodge, Mammoth Mountain Ski Area

Exhibit Hall, Hikes and Tours, Workshops,
Special Presentations, and More!

Complete program schedule, event registration,
and trail surveys available at www.mltpa.org

All events are free and open to the public.
Call (760) 934-3154 or visit www.mltpa.org for more information.

MAMMOTH     

The Mammoth Lakes Trails and Public Access Foundation (MLTPA) is a 501(c)(3) public benefit corporation.
Photo: John Wentworth. All rights reserved.



April 9, 2008 - Mammoth Trails



Mammoth Trails Charter
FINAL DRAFT
April 9, 2008

Purpose

Mammoth Trails is a collaborative effort to effectively and inclusively create and enhance recreation for our community.

Mission

Mammoth Trails inspires and creates exceptional recreation experiences.

Scope

Mammoth Trails embraces people and activities that range from moderate to extreme, local to international, and novice to elite.

Mammoth Trails engages groups, agencies and enterprises to fulfill its purpose and mission.

Mammoth Trails' resources are based in Mammoth Lakes and used throughout the region to support and encourage recreation.

Participation Criteria

Mammoth Trails participants are structured, sports and recreation-based organizations willing to share resources and engage collaboratively. Participants actively contribute effort and expertise and abide by, respect and commit to the Mammoth Trails Charter.

The Town of Mammoth Lakes is represented at Mammoth Trails. The U.S. Forest Service and other agencies are invited as appropriate and at the discretion of Mammoth Trails.

Operating Principles

• Roles

Mammoth Trails and Public Access (MLTPA) Foundation convenes and facilitates meetings, provides staff support and resources for Mammoth Trails, but has no organizational authority over the group. The Town of Mammoth Lakes acts in an advisory and resource capacity. Both MLTPA and the Town of Mammoth Lakes participate in discussions, but neither are parties to consensus decisions. Participants represent the best interests of their individual organizations but ultimately sit at the table in the spirit of collaboration and cooperation.

MLTPA, as the convener and provider of staff support, also serves as the meeting Chair. Mammoth Trails may choose to select a Chair using some other methodology in the future, for example on an annual rotational basis, if desired.

June 3, 2008 - Measure R



*Comment period extended
until September 12!*

THE TRAILS PLAN IS HERE!

To download or view TRAILS PLAN on-line go to www.mltpa.org

*For a CD copy of the TRAILS PLAN contact:
Mammoth Lakes Trails and Public Access Foundation, 760-934-3154
info@mltpa.org*

*Or for more information contact:
Steve Spaidel, Community Development, 760-934-8989
sspaidel@ci.mammoth-lakes.ca.us*



February 6, 2009 - Sherwin Area Trails Special Study (SATSS)

SATSS

The Sherwin Area Trails Special Study

Existing Conditions Memo
Opportunities and Constraints Memo
Alternatives Memo

*Commissioned by the Town of Mammoth Lakes
Alta Planning and Design, Project Consultant*

February 6, 2009

February 26, 2009 - Trail System Master Plan - FINAL DRAFT



Town of Mammoth Lakes Trail System Master Plan

February 2009

March 21, 2009 - Celebration of CAMP Partners



Town of Mammoth Lakes
Trail System Master Plan

February 2009

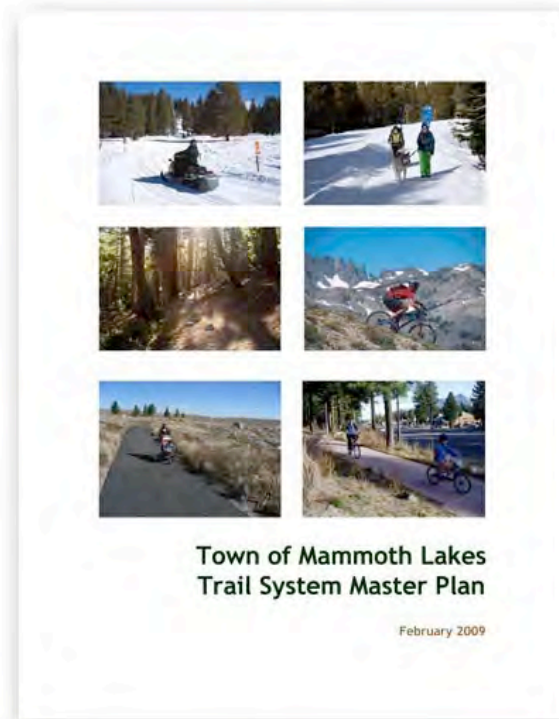
CAMP Is Complete Celebrate Partnership!

*An Event to Celebrate the Delivery of the
Final Draft of the Trail System Master Plan*

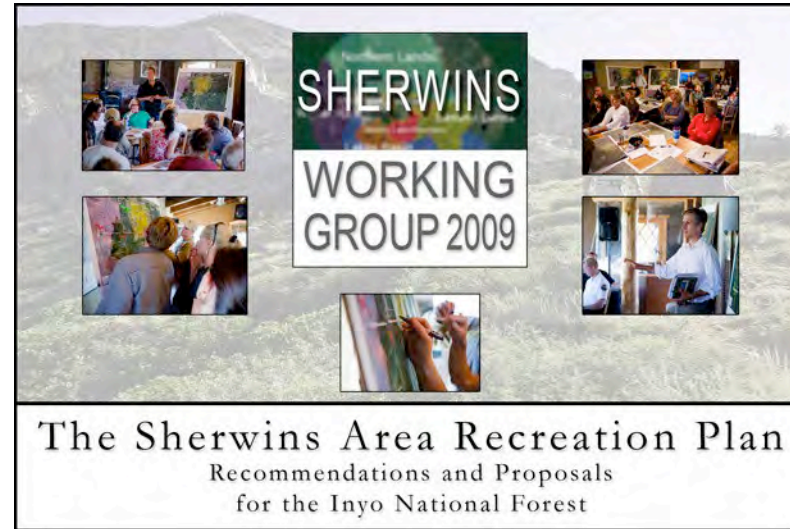
Saturday, March 21, 7:00 PM - 9:00 PM
Snowcreek Athletic Club



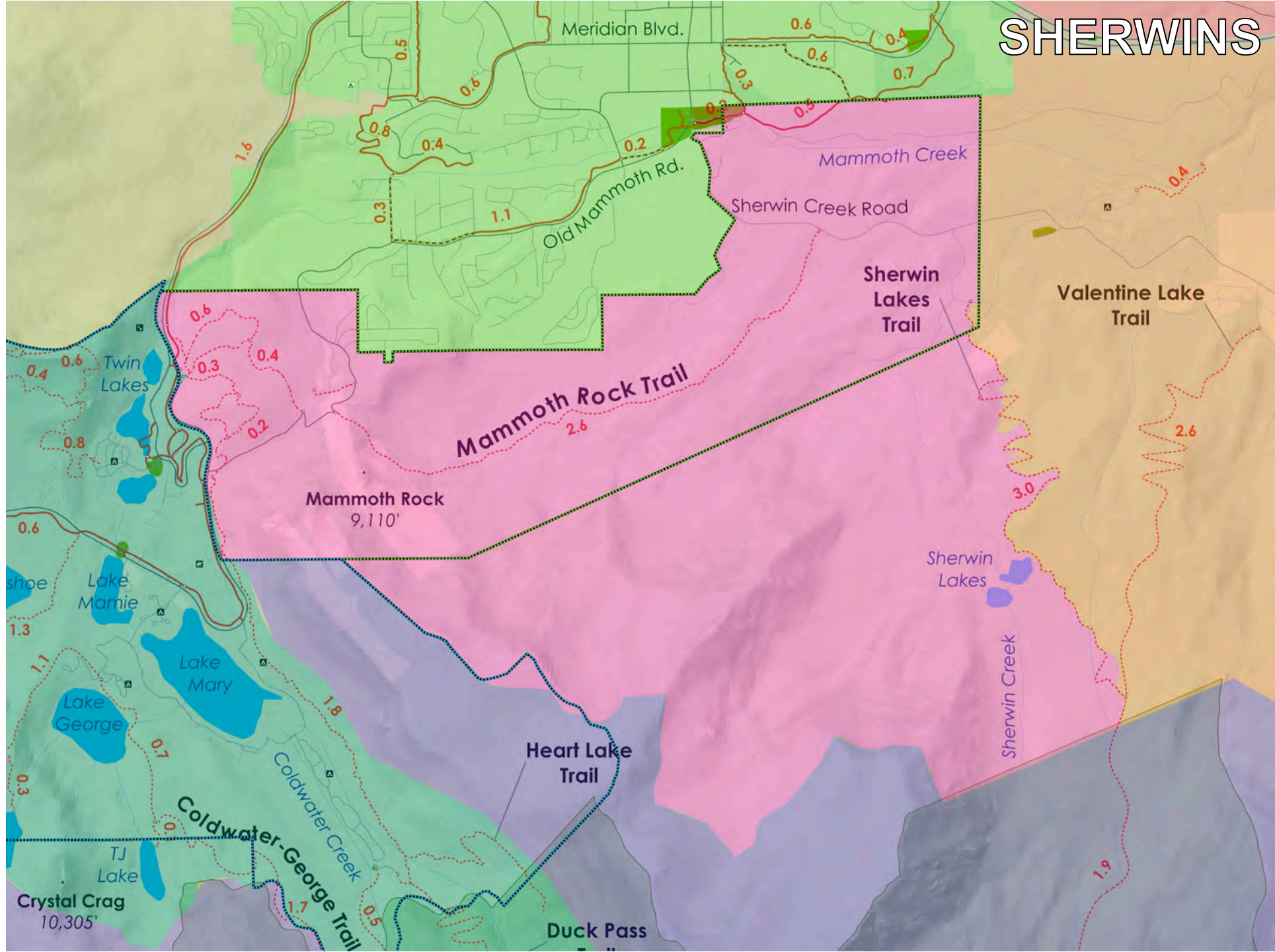
March 21, 2009 - Celebration of CAMP Partners



March – November, 2009 – Sherwins Working Group



SHERWINS



March – November, 2009 – Sherwins Working Group

The Sherwins Area Recreation Plan

Recommendations and Proposals
for the Inyo National Forest



as developed by

The Sherwins Working Group

November 3, 2009

March – November, 2009 – Sherwins Working Group

"The Voice of the Western Skier"



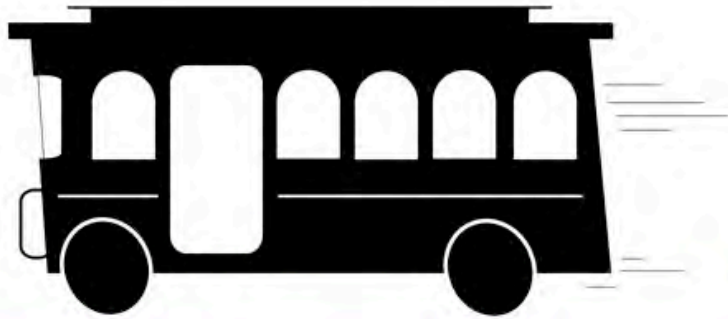
Summer 2010 – First On the Ground Implementation Projects



June 8, 2010

Vote Yes for U

Reliable funding for local projects



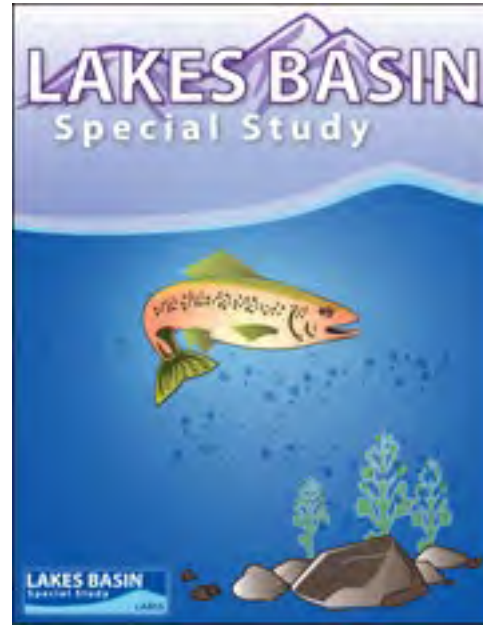
...without raising taxes

July 7, 2010 - RECSTRATS Initiated by MLTPA



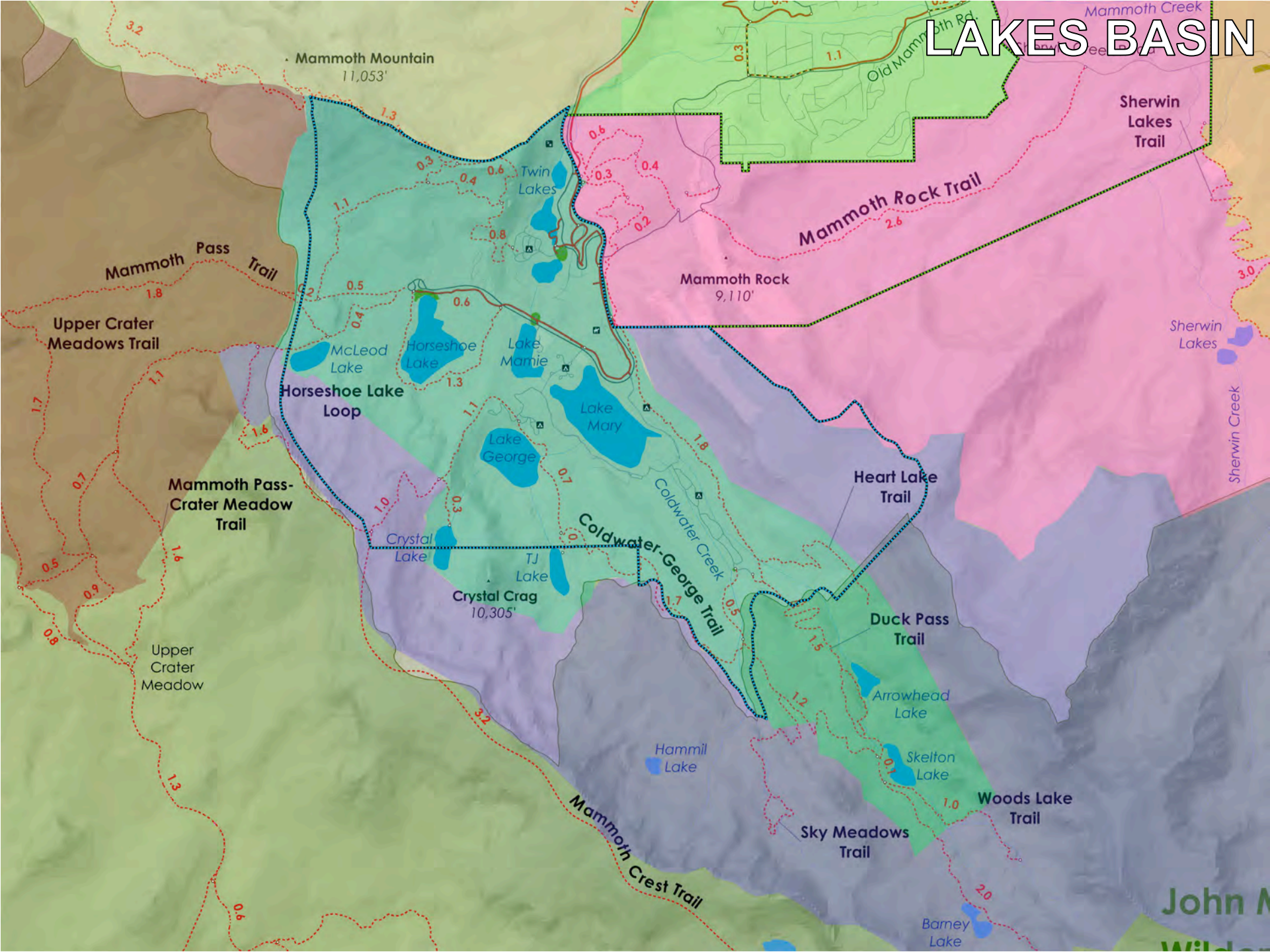
“The Mammoth Lakes Trails and Public Access Foundation (MLTPA) proposes to convene a process to benefit the community of Mammoth Lakes and those agencies, commissions, stakeholders and user groups with an interest in recreation in the Mammoth Lakes region. This facilitated process will work to articulate a vision for recreation in Mammoth Lakes and a strategic plan for its implementation. It is anticipated that this process will benefit interagency collaboration, direct the development of recreation infrastructure in the region and may be used to inform the strategic implementation of both Measures R and U. MLTPA appreciates the need for this process to get underway in a timely manner and to have work completed expeditiously. With this in mind, MLTPA is setting a project timeline goal of approximately three months.”

September 20, 2010 - Lakes Basin Special Study



“Thanks to a generous grant awarded to the Town of Mammoth Lakes (TOML) by the Sierra Nevada Conservancy that sought to “...build necessary interagency collaborative capacity for the long-term benefit of the Mammoth Lakes Basin by engaging agencies in a collaborative planning effort with specified near-term goals and deliverables,” the TOML partnered with the Inyo National Forest, the Mammoth Lakes Trails and Public Access Foundation (MLTPA), and Friends of the Inyo to study mobility and outdoor-recreation patterns in the Mammoth Lakes Basin.”

LAKE BASIN



November 15, 2010 - RECSTRATS Adopted by Town Council

Town Council Draft

Final Proof 15 November

Mammoth Lakes Recreation

A Vision for Recreation in Mammoth Lakes and a Strategic Plan for Its Implementation



P.O. Box 10109 South Lake Tahoe, California 96158 (530) 541-2462 FAX (530) 541-8720 www.smgonline.net



June 1 - August 15, 2011 - LABSS “Preliminary Management Concepts”

LAKES BASIN SPECIAL STUDY

Preliminary Management Concepts
for the Mammoth Lakes Basin

**Public Comment Requested
June 1 to July 15, 2011**

U.S. Forest Service
Mammoth Lakes California
MLIPA
FRIENDS OF THE INYO
SIERRA NEVADA CONSERVANCY



September 24, 2011 – First SHARP Trail Construction



September 24, 2011 – First SHARP Trail Construction



September 28, 2011 – Planning Commission Recommends Adoption



October 5, 2011 - RECSTRATS II Adopted by Town Council

"DRAFT 2.0"

Mammoth Lakes RECSTRATS II Implementation Strategy

A Vision for Recreation in Mammoth Lakes and a Plan for Its Implementation



Prepared for the Town of Mammoth Lakes

August 2011



Prepared by:



P.O. Box 10109 South Lake Tahoe, California 96158 (530) 541-2462 FAX (530) 541-8720 www.smgonline.net



October 19, 2011 – TSMP Adopted by Town Council



October 22, 2011 – American Recovery and Reinvestment Act (ARRA) Projects



October 22, 2011 – American Recovery and Reinvestment Act (ARRA) Projects



October 22, 2011 – American Recovery and Reinvestment Act (ARRA) Projects



January 26, 2012 - Project Delivery to TOML



January 26, 2012 - Project Delivery to TOML



February 1, 2012 - Town Council: “Enhanced Relationship with USFS”



TOWN COUNCIL APPROVES RESOLUTION FOR ENHANCED RELATIONSHIP WITH THE UNITED STATES FOREST SERVICE

“... the Town of Mammoth Lakes desires to establish and formalize a high level of interagency cooperation with the USDA Inyo National Forest to plan, design, implement, construct, operate, maintain, and promote an integrated year-round trail system to be known as the Mammoth Lakes Trail System.”

February 15, 2012 - Town Council: “Measure R funds for MLTS”



TOWN COUNCIL APPROVES FIVE YEAR FUNDING COMMITMENT TO MAMMOTH LAKES TRAIL SYSTEM

“... approve a multi-year commitment of Measure R funds to enhance and improve the Mammoth Lakes Trail System (MLTS) including an annual minimum request of \$300,000 beginning July 1, 2012 for a period of five (5) years.”

February 15, 2012 - Town Council: “MLTS CC”



TOWN COUNCIL VOTES TO ESTABLISH THE MAMMOTH LAKES TRAIL SYSTEM COORDINATING COMMITTEE

- A.** Establish the Mammoth Lakes Trail System Coordinating Committee (MLTSCC) with the initial composition recommended by the Recreation Commission on February 7, 2012.
- B.** Approve the scope of work listed on page 2 of the agenda bill.
- C.** Approve the terms of office for 4 years, and use the Advisory Bodies Handbook as the method for filling vacated seats on the MLTSCC.

February 29, 2012 - LABSS

The logo features the text "LAKES BASIN" in large, bold, white capital letters on a dark blue background. Below it, "Special Study" is written in a smaller, white, sans-serif font. A light blue wavy line separates this from the word "LABSS" in white capital letters on a dark blue background at the bottom right.

Executive Summary - Final Draft

February 27, 2012



March 14, 2012



“MLTS Management Program 2012 - Preview”


MLTS Coordinating Committee

Inaugural Meeting - March 14, 2012



March 14, 2012 - Mammoth Lakes Trail System Coord Committee



April 12, 2012




MAMMOTH LAKES TRAIL SYSTEM




MON	TUES	WED	THU	FRI
75°	100°	120°	62°	68°
13°	-35°	35°	-50°	24°

TRAILS DESTINATIONS ACTIVITIES


 

Welcome to the Mammoth Lakes Trail System!



Welcome to the Mammoth Lakes Trail System! Mammoth Lakes and the Eastern Sierra offer its residents and guests boundless recreation opportunities within vast, breathtaking national forestland. From lakes stocked with trout to granite crags, miles of snowmobile trails to backpack trips into pristine wilderness, Mammoth and the Inyo National Forest have something for all seasons, all interests, all ability levels, and all ages. More than 300 miles of trails and recreation amenities, managed jointly by the Town of Mammoth Lakes and the Inyo National Forest, are interlaced within the MLTS's... [\[+\] more](#)

Update Location Summer Winter



Map Satellite

Map Trails

- Horseshoe Lake
- Mammoth Rock Trail
- Lakes Basin Path
- Sierra Park Connector
- Duck Pass
- Horseshoe Lake
- Mammoth Rock Trail
- Lakes Basin Path
- Sierra Park Connector
- Duck Pass



Trail System Grand Opening – October, 2012



MAMMOTH LAKES TRAIL SYSTEM



The Trails



The Trails



The Trails



The Trails



The Trails



The Trails



The Trails



The Trails



The Trails



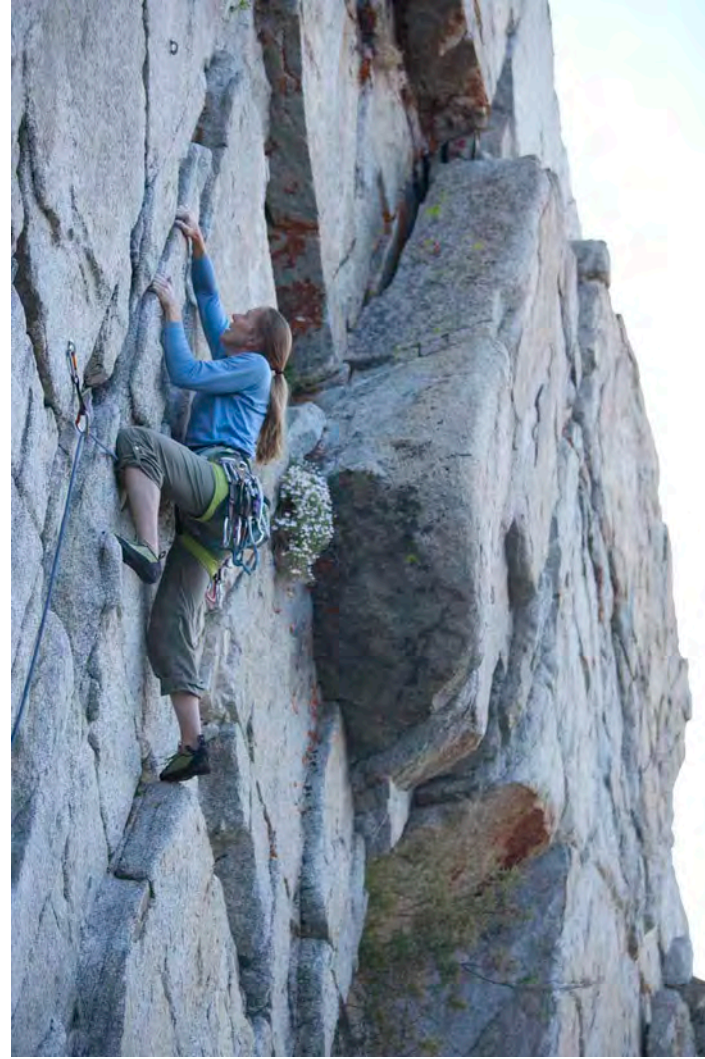
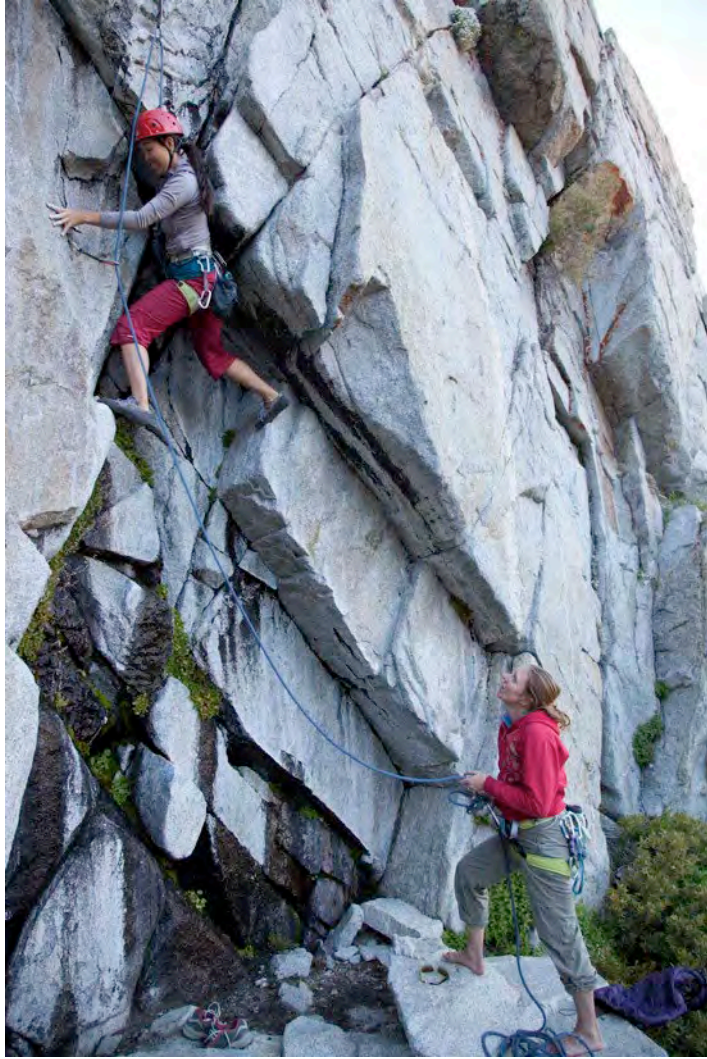
The Trails



The Trails



The Trails



The Trails



The Trails



Mammoth Lakes Trail System - 2022



Sherwins Area Trails

[Project Page](#)





United States Department of Agriculture
Forest Service

Sherwins Area Trails

Mammoth Ranger District, Inyo National Forest, Mono County, California
July 2021



Mammoth Rock Trail Connector

Photo: Mammoth Lakes Trail System

Proposed Action Map



Sherwins Area Trails

- July 2022 - Submitted IMPLEMENTATION proposal for the Sherwins Trailhead requesting **\$950,000 to construct** the shovel-ready trailhead design.
- July 2022 - Submitted PLANNING proposal for the Sherwins Area Trails and Trailhead Expansion requesting **\$620,000 to perform environmental analysis** for the proposed Sherwins Area Trails and an expanded trailhead area.
- December 2022 – SNC Board will meet to evaluate proposals.





Sierra Nevada Watershed Improvement Program
Vibrant Recreation & Tourism Grant Program



2022

PROPOSAL

SNC Grant #	1417-RT
Project Title <i>60-character limit</i>	Sherwins Trailhead
Project Category <i>Select one</i>	<input type="checkbox"/> Planning <input checked="" type="checkbox"/> Implementation
Funding Amount Requested	\$ 953,414.00
Total Project Cost <i>SNC request plus funding or in-kind from other sources</i>	\$ 1,177,414.00
Applicant Organization	Mammoth Lakes Recreation
Applicant Authorized Representative <i>Person who is authorized to sign the grant agreement</i>	Craig Albright Board President 760-660-4948 Calbright@mammothresorts.com PO Box 8562 Mammoth Lakes, CA 93546
Applicant Day-to-Day Contact <i>Person who manages the project</i>	Kim Anaclerio Program Director 760-660-4948 kim@mammothlakesrecreation.org PO Box 8562 Mammoth Lakes, CA 93546
Subregion(s)	East Sierra
County(ies)	Mono
SNC Project Lead	Matt Driscoll



PROPOSAL

A note on using the fillable form fields in this document:

All of the fillable form fields in this document allow you to vary the text format as needed, using font sizes, bold, italics, underlines, tables, and lists. Bullet and numbered lists work in the form fields except on the first and last line of each field; you may use enter/return to add an extra line before and after a list as needed. You may also compose answers in word, then cut and paste into the form fields and adjust formatting as needed.

Concise Project Summary

Provide a brief Project Summary, including purpose, location, landownership, acreage or other measure of project size (if applicable), partners, and estimated cost.

This should be a short paragraph or list.

Please limit the response to six sentences or bullet points.

The proposed Sherwins Trailhead will connect to existing infrastructure within the Mammoth Lakes Trail System (MLTS), create a seamless, integrated recreation experience for locals and visitors of the Mammoth Lakes Area, and protect sensitive archaeological sites and habitat by defining and developing the trailhead area. Located within the Town of Mammoth Lakes' (TOML) municipal boundary on Inyo National Forest (INF) lands, and proposed accessibility via public transportation, the trailhead will serve people accessing the Sherwins sub-region, Mammoth Meadow, Mammoth Rock Trail, and the entirety of the Mammoth Lakes Basin. The proposed Sherwins Trailhead site has become a de-facto trailhead for a wide variety of recreation uses including hiking, mountain biking, equestrian use, dog walking, snowplay, snowmobiling, Nordic and backcountry skiing. The current site-conditions indicate the purpose and need for a sustainable public access point, as evidenced by several user-created trails, erosion and degradation of sensitive habitat and an abundance of archeological resources in the vicinity.

Partnering with INF and the TOML, the development of the new Sherwins Trailhead will include the following: paved parking including ADA accessible parking, ADA accessible double vault toilets, ADA accessible interpretive and educational kiosks, bicycle parking rack, bicycle maintenance station (bike pump, bike tools, bike stand), free public transit bus terminal (service provided by Eastern Sierra Transit Authority under contract with TOML), municipal and United States Forest Service (USFS) approved wayfinding signage, and public access to approximately 19 miles of proposed, multi-use, non-motorized trails connecting to the MLTS, John Muir Wilderness and Ansel Adams Wilderness.

The Trailhead footprint will be approximately 25,000 square feet. The Engineers Estimate of Probable Cost to construct the trailhead is \$830,500. SNC requested funding is \$953,414. The total project cost, including in-kind, is estimated at \$1,177,414.



Sierra Nevada Watershed Improvement Program
Vibrant Recreation & Tourism Grant Program



2022
PROPOSAL

SNC Grant #	1485-RT
Project Title <i>60-character limit</i>	Sherwins Area Trails and Trailhead Expansion
Project Category <i>Select one</i>	<input checked="" type="checkbox"/> Planning <input type="checkbox"/> Implementation
Funding Amount Requested	\$ 510,596.68
Total Project Cost <i>SNC request plus funding or in-kind from other sources</i>	\$ 618,596.68
Applicant Organization	Mammoth Lakes Recreation
Applicant Authorized Representative <i>Person who is authorized to sign the grant agreement</i>	Craig Albright Board President 760-660-4948 Calbright@mammothresorts.com
Name Title Phone Email Mailing and/or Physical Address	PO Box 8562 Mammoth Lakes, CA 93546
Applicant Day-to-Day Contact <i>Person who manages the project</i>	Kim Anaclerio Program Director 760-660-4948 kim@mammothlakesrecreation.org
Name Title Phone Email Mailing and/or Physical Address	PO Box 8562 Mammoth Lakes, CA 93546
Subregion(s)	East Sierra
County(ies)	Mono
SNC Project Lead	Matt Driscoll



PROPOSAL

A note on using the fillable form fields in this document:

All of the fillable form fields in this document allow you to vary the text format as needed, using font sizes, bold, italics, underlines, tables, and lists. Bullet and numbered lists work in the form fields except on the first and last line of each field; you may use enter/return to add an extra line before and after a list as needed. You may also compose answers in word, then cut and paste into the form fields and adjust formatting as needed.

Concise Project Summary

Provide a brief Project Summary, including purpose, location, landownership, acreage or other measure of project size (if applicable), partners, and estimated cost.

This should be a short paragraph or list.

Please limit the response to six sentences or bullet points.

The proposed planning for the Sherwins Trails and Trailhead expansion will connect to existing infrastructure within the Mammoth Lakes Trail System (MLTS), create a seamless, integrated outdoor recreation experience for locals and visitors of the Mammoth Lakes Area, and protect sensitive archaeological sites and habitat by defining and developing sustainably designed trails and expanding the current trailhead area. Located within the Town of Mammoth Lakes' (TOML) municipal boundary on Inyo National Forest (INF) lands, and proposed accessibility via public transportation, the trails and trailhead will serve people accessing the Sherwins sub-region, Mammoth Meadow, Mammoth Rock Trail, and the Mammoth Lakes Basin. Existing uses of the project area include a wide variety of recreation including hiking, mountain biking, equestrian use, dog walking, Nordic and backcountry skiing, snowplay, and snowmobiling. The current site-conditions indicate the purpose and need for a sustainable public trail system, as evidenced by several user-created trails, erosion and degradation of sensitive habitat and an abundance of archeological resources in the vicinity.

Mammoth Lakes Recreation (MLR), INF and the TOML will partner in the planning of the proposed Sherwins Area Trails and Trailhead Expansion project, which will include the following: expanded paved parking including ADA accessible parking, ADA accessible picnic area with shade pavilion, and public access to approximately 19 miles of multi-use, non-motorized trails connecting to the MLTS, John Muir Wilderness and Ansel Adams Wilderness and beyond.

The final scope of the project will be determined through the planning and design process. SNC requested funding is \$510,596.68. The total project cost, including in-kind, is estimated at \$618,596.68.

Trail Crew



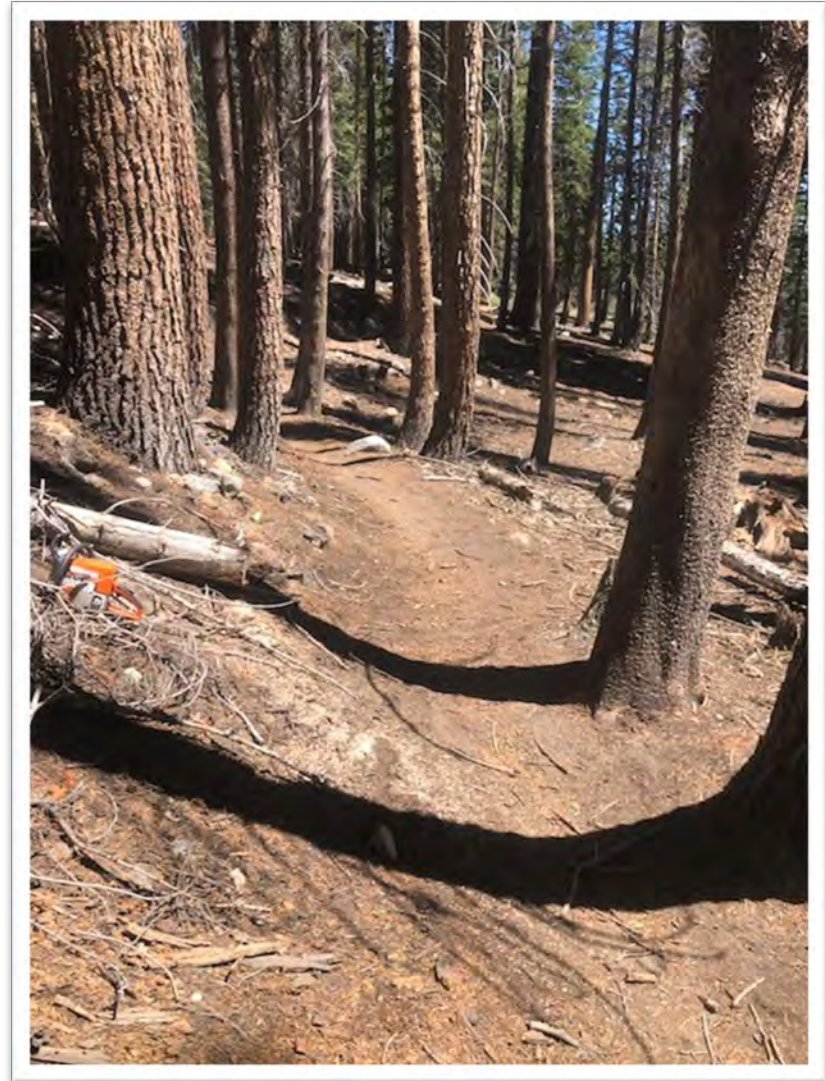
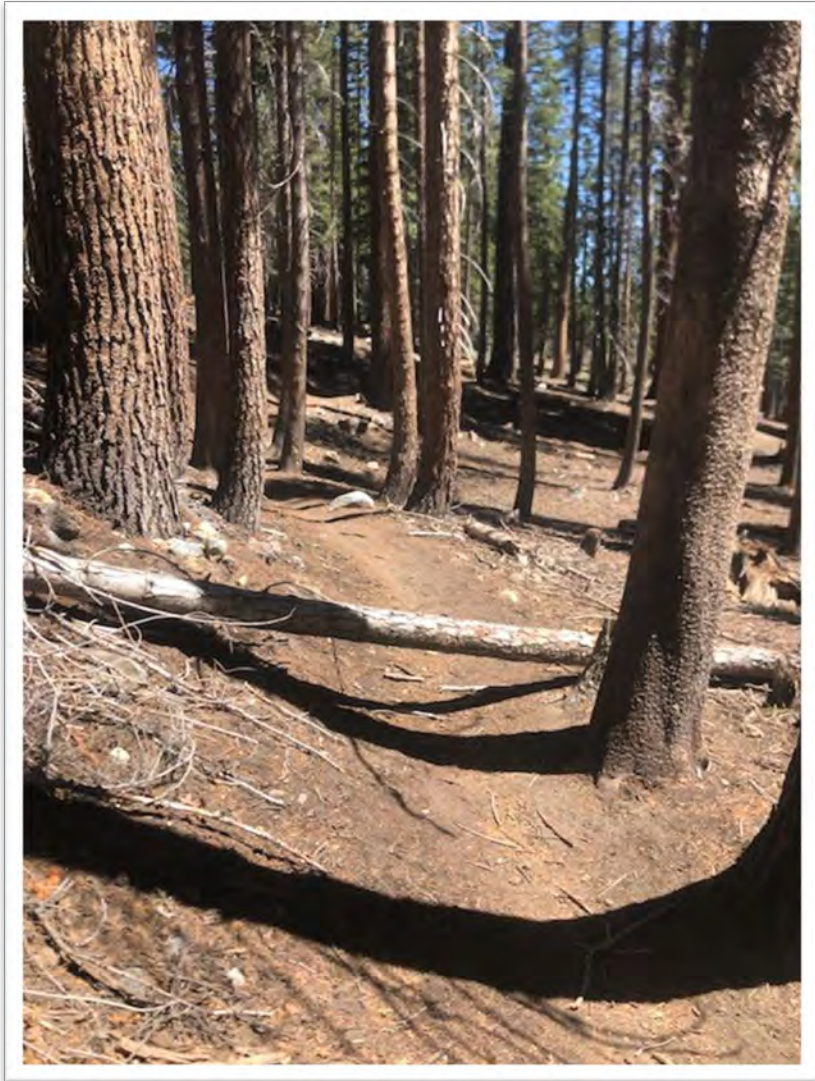
Trail Crew



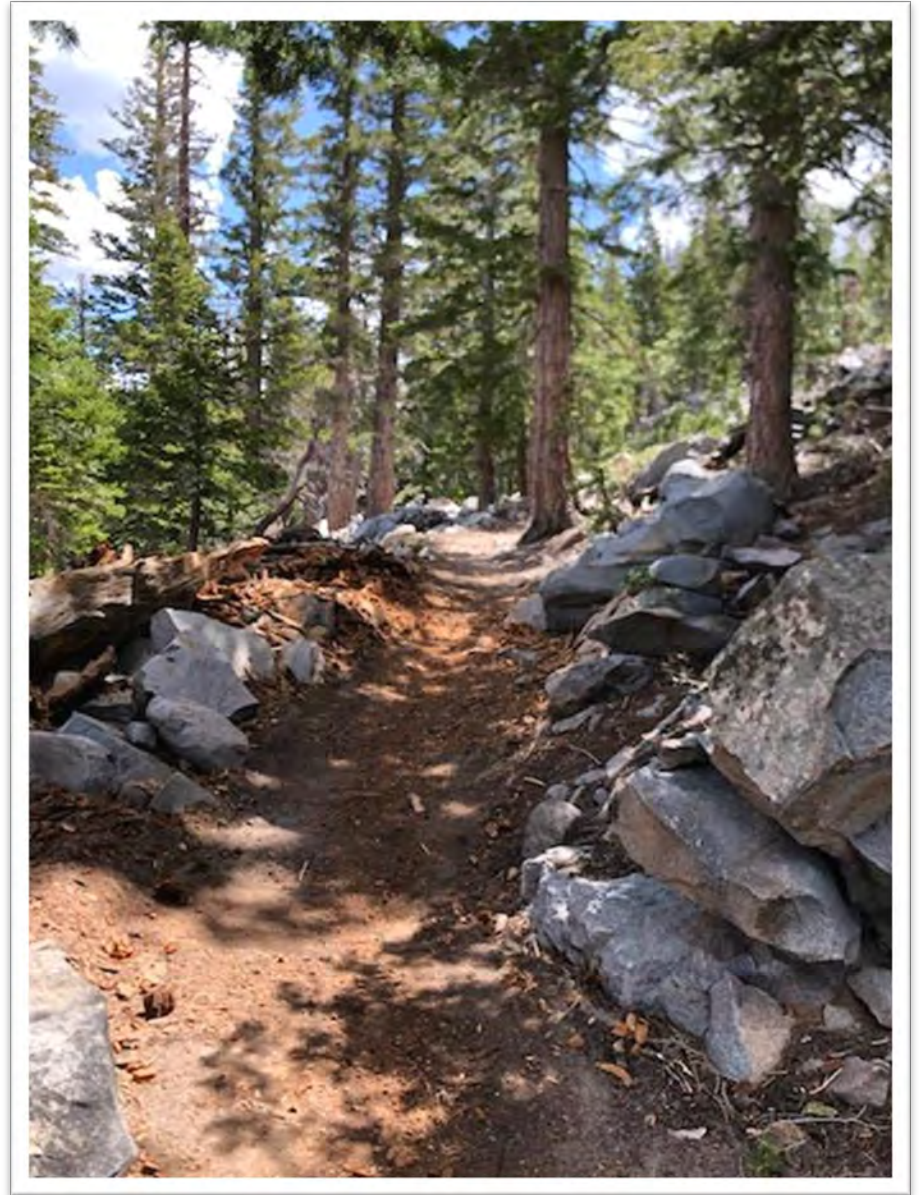
Trail Crew



Trail Crew



Trail Crew



Trail Crew



Trail Crew



Lakes Basin Connector Trails

[Project Page](#)





Lakes Basin New Trails

Summer 2022



- New MLTS Trails
- MLTS Trails
- Multi Use Paths

MAMMOTH LAKES TRAIL SYSTEM



Mamie Woods



MAMMOTH LAKES TRAIL SYSTEM



TRAIL NEWS

TRAIL CONDITIONS



TRAILS

DESTINATIONS

ACTIVITIES

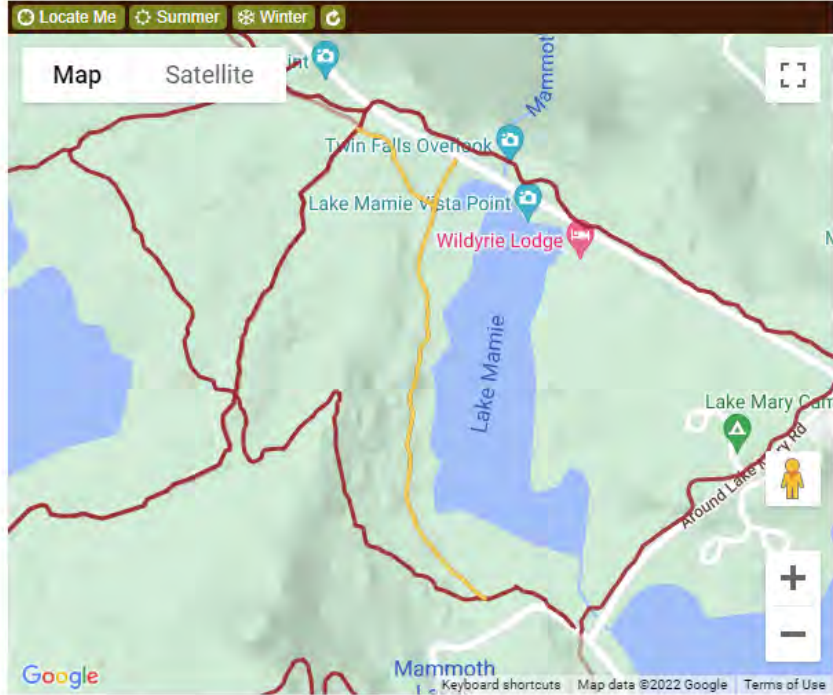
Search Mammothtrails



Mamie Woods 0.6 mi

Overview

Map



Mamie Woods includes segments of reconstructed user-created trails and newly constructed rolling contour trail. The views along the shore of Lake Mamie provide a serene experience for all trail users. The wooded environment and rocky shoreline provide a natural playground for families. The Mammoth Lakes community provided recommendations for trail development in the Mammoth Lakes Basin as part of the "Lakes Basin Special Study" in 2011. This trail alignment was completed in the summer of 2022 and provides connectivity between the [Lakes Basin Path](#) and [Lake George Path](#) along the western shore of Lake Mamie.

Elevation (ft)



Horseshoe Woods



MAMMOTH LAKES TRAIL SYSTEM



TRAIL NEWS

TRAIL CONDITIONS



TRAILS

DESTINATIONS

ACTIVITIES

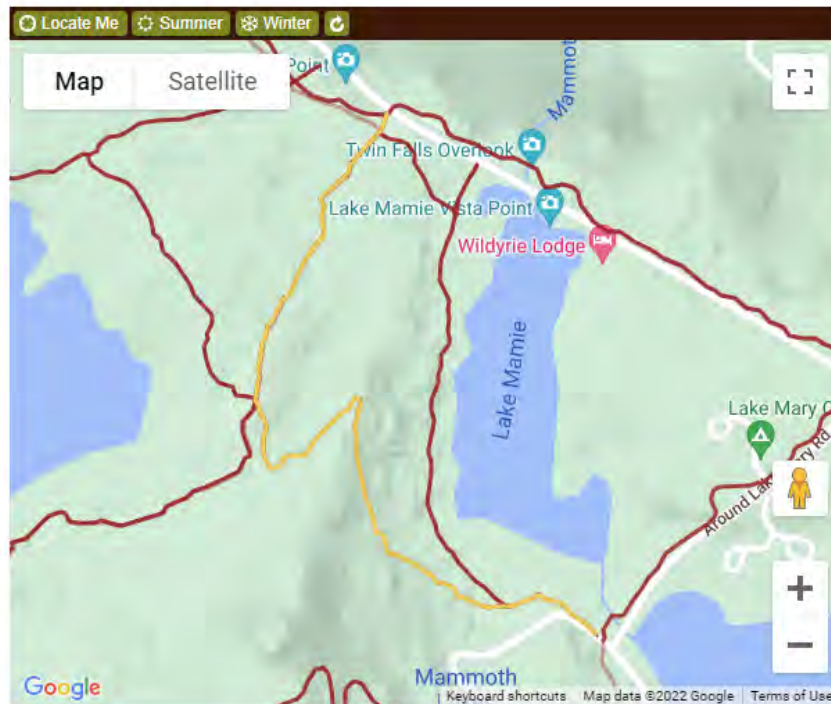
Search Mammothtrails



Horseshoe Woods 0.8 mi

Overview

Map



The western segment of Horseshoe Woods follows an old road bed on what was a portion of the [Horseshoe Lake Loop](#). It then continues as a newly constructed rolling contour trail over a nicely wooded ridge, through a predominately lodgepole pine forest to Lake Mamie and connects with Mamie Woods.

Horseshoe Woods connects with Mamie Woods and the Lake George Path on the eastern side of the trail and to the Lakes Basin Path on the western terminus.

The Mammoth Lakes community provided recommendations for trail development in the Mammoth Lakes Basin as part of the "Lakes Basin Special Study" in 2011. This trail alignment was completed in the summer of 2022 and provides connectivity between Horseshoe Lake and Lake Mamie. The newly constructed portion of Horseshoe Woods offers... [\[+\] more](#)

Elevation (ft)



Dog Boulder Trail



MAMMOTH LAKES TRAIL SYSTEM



TRAIL NEWS

TRAIL CONDITIONS



Search Mammothtrails



TRAILS

DESTINATIONS

ACTIVITIES

Dog Boulder Trail 0.2 mi

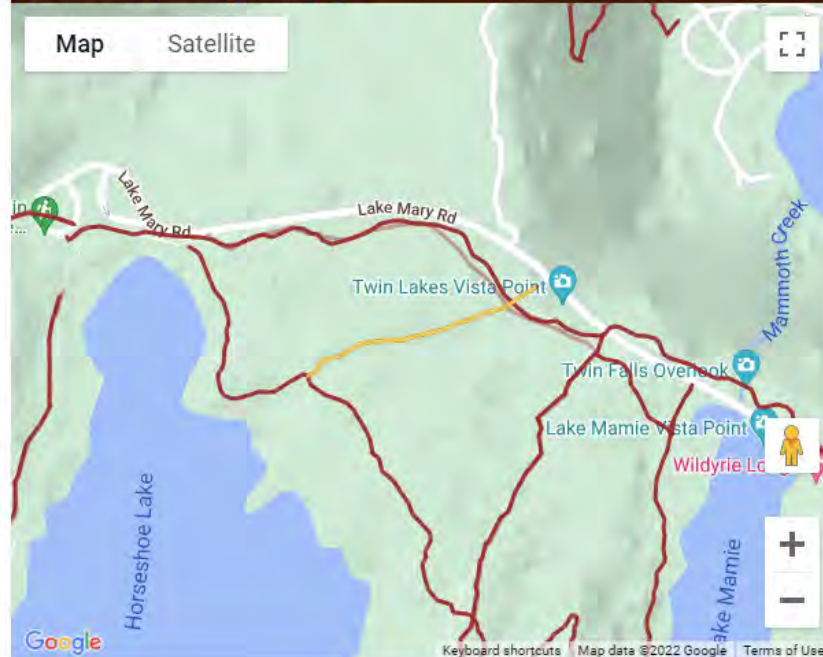
Overview

Map

Locate Me Summer Winter

Map

Satellite



This trail is a reconstructed user-created trail that has been improved for a non-motorized multi-use experience. Dog Boulder is a beautiful granite specimen that is popular for climbing and can be found at the western terminus of Dog Boulder Trail.

The Mammoth Lakes community provided recommendations for trail development in the Mammoth Lakes Basin as part of the "Lakes Basin Special Study" in 2011. This trail alignment was completed in the summer of 2022 and provides connectivity between the [Horseshoe Lake Loop](#) and the [Lakes Basin Path](#).

Elevation (ft)



Summer of Stewardship - Trail Days 2022

WEDNESDAYS & WEEKENDS

2022

SUMMER OF STEWARDSHIP

TRAIL DAYS

build-host-adopt-care-connect

Sign up for shifts to help the Mammoth Lakes trail crew and hosts!
Everyone is welcome!
Volunteer stewardship opportunities are open all summer long!

MAMMOTH LAKES TRAIL SYSTEM

UAS Mammoth Lakes Mammoth Lakes RECREATION R

Summer of Stewardship - Trail Days

- **175 Volunteers**
- **311 Hours** spent as Volunteer **Trail Crew** and **Lakes Basin Cleanup**
- **30 Hours** spent as Volunteer **Hosts** Assisting Visitors on the Trails
- **15 Hours** spent as Volunteer **Water Hosts** Cleaning Up Around Lake Mamie
- 1.5 mile of New Trail Construction in the Lakes Basin
- Trail Maintenance on Mountain View Trail
- Many, Many Pounds of Trash Picked Up In and Around Mammoth Lakes
- **\$16,339.82 Labor Value**



Summer of Stewardship - Trail Days



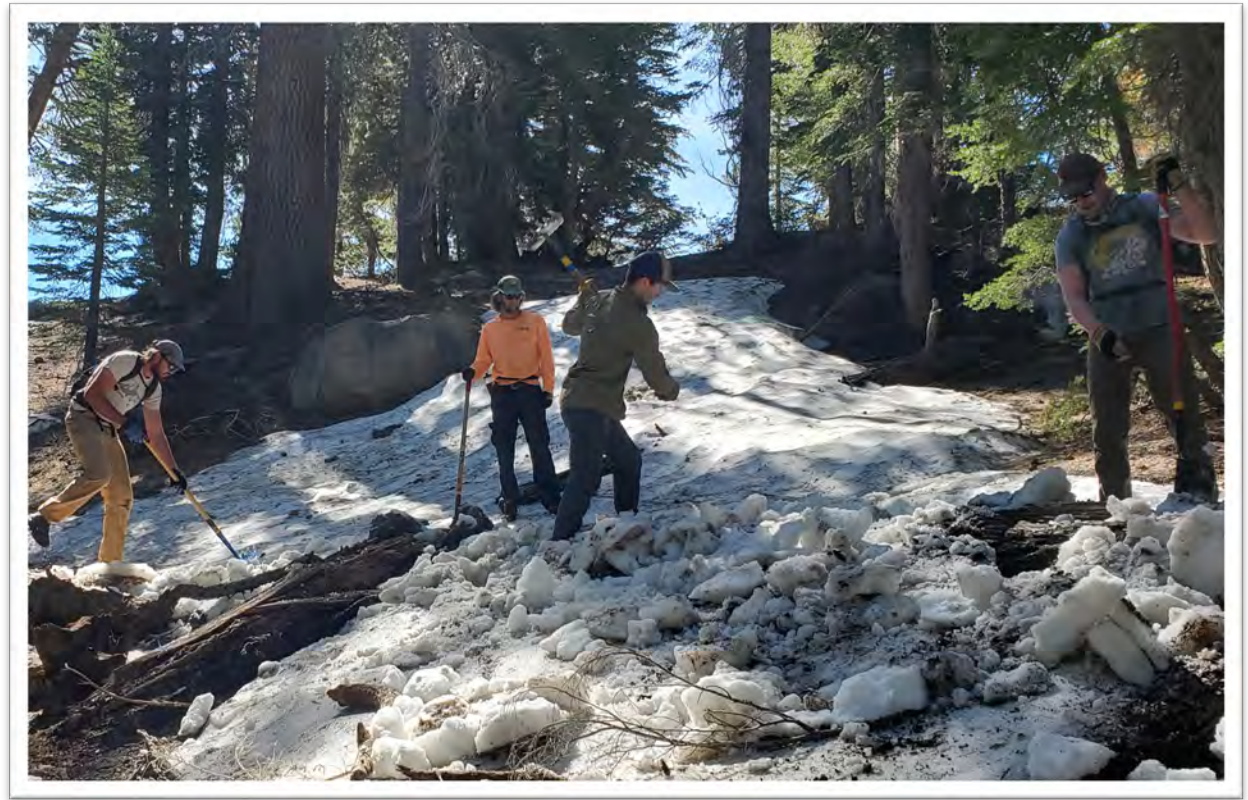
Summer of Stewardship - Trail Days



Summer of Stewardship - Trail Days



Summer of Stewardship - Trail Days



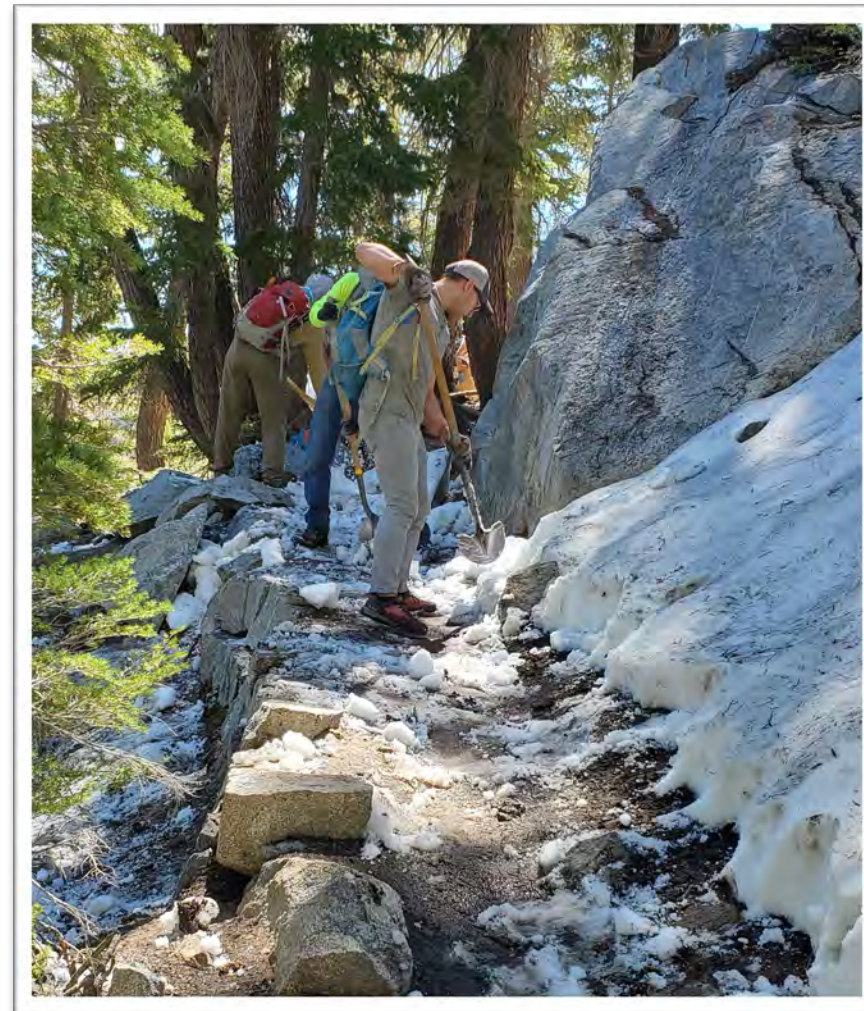
Summer of Stewardship - Trail Days



Summer of Stewardship - Trail Days



Summer of Stewardship - Trail Days



Summer of Stewardship - Trail Days



Summer of Stewardship - Trail Days



Summer of Stewardship - Trail Days



Lakes Basin Cleanup 2022



Lakes Basin Cleanup 2022

375 Pounds of Waste Collected

1 - 42 Gallon Bag of Recyclables

2 - 5 Gallon Buckets of Fishing Line

- | | |
|--------------------|---------------------------------------|
| 2 Clothing Hangers | 6 Masks |
| 1 Ear Plug | 184 Napkins |
| 1 Running Shorts | 1 Dog Bag |
| 5 Hair Ties | 14 Raw Dog Feces |
| 24 Misc. Paper | 1 Sandal |
| 1 Bullet Casing | 1 Deodorant |
| 4 Socks | 1 Fake Leaf |
| 1 Glove | 1 Pair of Shoes |
| 2 Kleenex | 1 Ski Pole Basket |
| 4 Larger Cardboard | 2 R.Bar w/ concrete footings attached |
| 2 Metal Wire | 1 Computer Junk |
| 1 Lipstick | 3 Receipts |
| 3 Clothing Pieces | |

TRASH COLLECTED Citizen scientist: Pick up all trash and record all items you find below. No matter how small the items, the data you collect are important for Trash Free Seas!

EXAMPLE: Plastic Bags: ||||| TOTAL # = 8

Please DO NOT use words or check marks. Only numbers are useful data.

MOST LIKELY TO FIND ITEMS:	TOTAL #	TOTAL #	
Cigarette Butts:	= 196	Beverage Bottles (Plastic):	= 45
Food Wrappers (candy, chips, etc.):	= 277	Beverage Bottles (Glass):	= 43
Take Out/Away Containers (Plastic):	= 12	Beverage Cans:	= 53
Take Out/Away Containers (Foam):	= 25	Grocery Bags (Plastic):	= 11
Bottle Caps (Plastic):	= 136	Other Plastic Bags:	= 29
Bottle Caps (Metal):	= 91	Paper Bags:	= 19
Lids (Plastic):	= 40	Cups & Plates (Paper):	= 13
Straws/Stirrers:	= 44	Cups & Plates (Plastic):	= 15
Forks, Knives, Spoons:	= 20	Cups & Plates (Foam):	= 19
FISHING GEAR:	TOTAL #	PACKAGING MATERIALS:	TOTAL #
Fishing Buoys, Pots & Traps:	= 7	6-Pack Holders:	= 0
Fishing Net & Pieces:	= 5	Other Plastic/Foam Packaging:	= 56
Rope (1 yard/meter = 1 piece):	= 7	Other Plastic Bottles (oil, bleach, etc.):	= 10
Fishing Line (1 yard/meter = 1 piece):	= 30	Strapping Bands:	= 17
OTHER TRASH:	TOTAL #	Tobacco Packaging/Wrap:	= 0
Appliances (refrigerators, washers, etc.):	= 0	PERSONAL HYGIENE:	TOTAL #
Balloons:	= 6	Condoms:	= 0
Cigar Tips:	= 3	Diapers:	= 5
Cigarette Lighters:	= 1	Syringes:	= 1
Construction Materials:	= 12	Tampons/Tampon Applicators:	= 1
Fireworks:	= 0		
Tires:	= 0		
TINY TRASH LESS THAN 2.5CM:	TOTAL #		
Foam Pieces:	= 103		
Glass Pieces:	= 421		
Plastic Pieces:	= 278		
DEAD/INJURED ANIMAL	STATUS	ENTANGLED	TYPE OF ENTANGLEMENT ITEM
	Dead or Injured	Yes or No	
ITEMS OF LOCAL CONCERN:			
1. COMPUTER JUNK	2. RECEIPTS	3. SYRINGE	
CLEANUP SUMMARY (circle units)			
Number of Trash Bags Filled:	Weight of Trash Collected:	Distance Cleaned:	

WOMEN'S PAD NOT TAMPON

2.5cm (actual size)



MLTS Host Team



MLTS Host Team



MLTS Host Team



- **May 27th – September 5th**
- **Over 14,900 Interactions with Trail Users!**
- **2,124 Pounds of Trash Cleaned Up!**



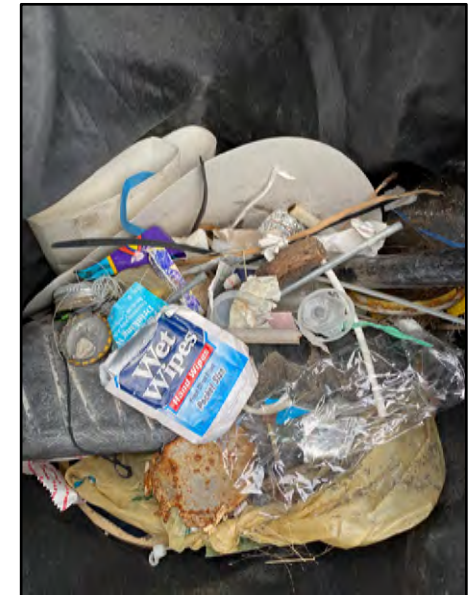
MLTS Water Host



Clean Up The Lake – June Lake – September 2022



“Dirtiest dive we’ve
EVER done”



Trashy Thursdays



Trashy Thursdays



Trashy Thursdays

177.5 Volunteer Hours!

1,576 Pounds of Trash Cleaned Up!

\$6,311.9 of Total Volunteer Value!



Eastern Sierra Adopt A Trail



www.esadoptatrail.org



Eastern Sierra Adopt A Trail

- September 2020 – Present – Eastern Sierra Adopt-A-Trail (ESAAT) **started as a pilot program in 2020 with 18 TOML facilities**. It has now **grown to 40 TOML facilities** and 14 Mono County facilities.
- **\$56,550 has been raised** to directly benefit trails and recreational facilities in Mammoth Lakes and Mono County, eliminating the use of any Measure R tax dollars for the ESAAT program and offsetting overall trail maintenance and equipment costs.
- Volunteer adoptions run from **January 1 – December 31**. Since September 2020, volunteers have reported **649 hours** helping to maintain trails and facilities in Mammoth Lakes and Mono County, equaling **\$19,440 in added volunteer value**.



Eastern Sierra Adopt A Trail

Volunteer Totals

	Volunteer Hours	Visitor Contacts	Pounds of Trash	Pounds of Pet Waste
2020	56	26	140	7
2021	463	318	990	122
2022*	375	286	600	57
Total	894	630	1,730	186

Sponsorship Totals

	TOML	Mono County	All
FY 20/21			\$16,00
FY 21/22	\$23,000	\$8,400	\$31,400
FY 22/23 (July 2022)	\$6,750	\$2,400	\$9,150
Total	\$29,750	\$10,800	\$56,550



Tangle Free Waters



www.Tanglefreewaters.org

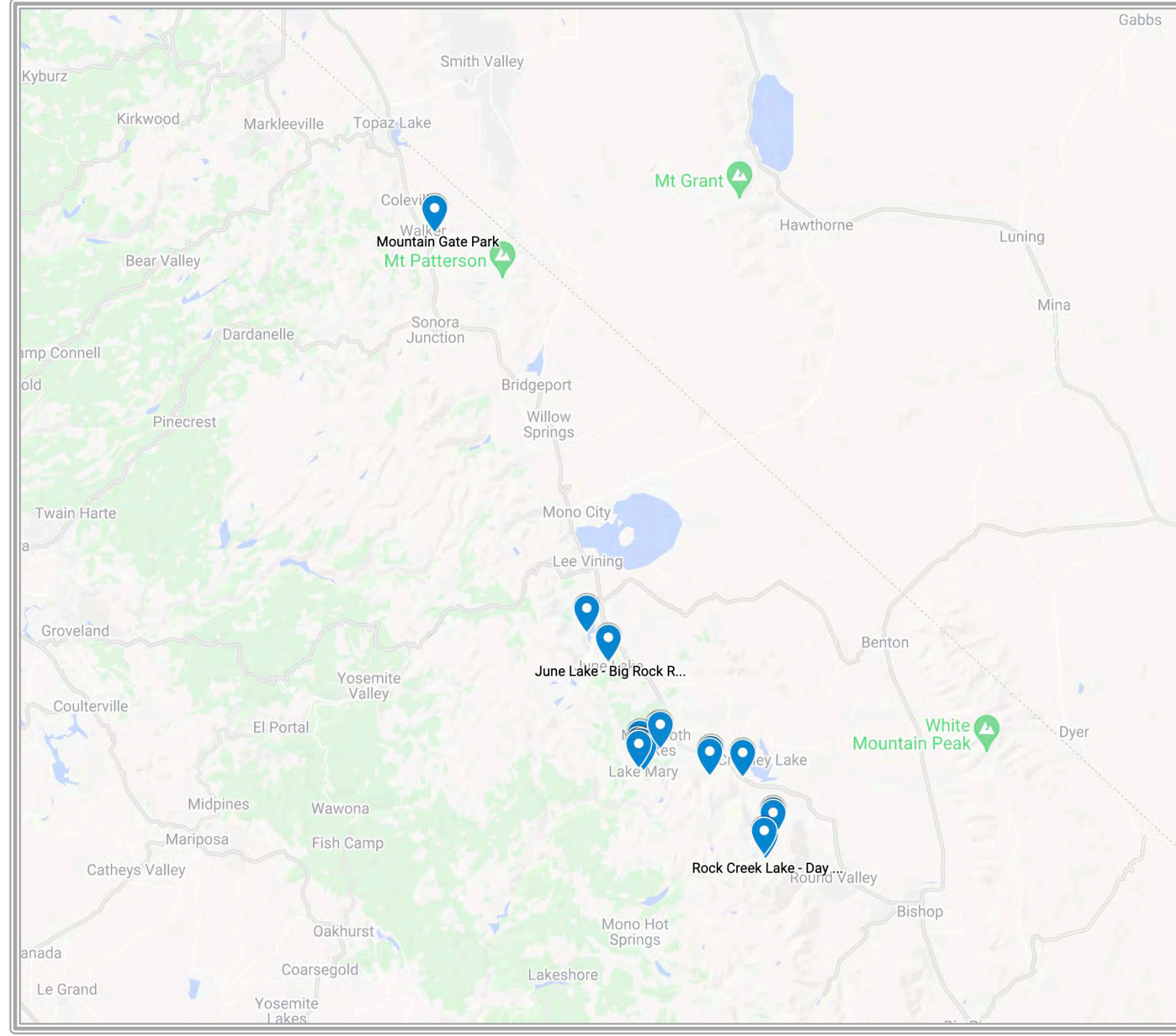




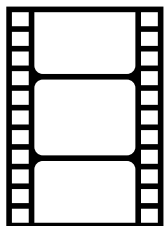
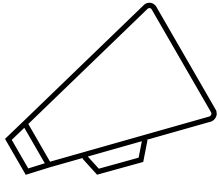
Tangle Free Waters

is a program designed to reduce and remove monofilament fishing line from Eastern Sierra waterways and keep it out of landfills by means of recycling.

Station Locations



Community Building



RIDE LIKE a PRO!



MammothTrails.org - Information, Maps and More!

E-BIKES ARE ALLOWED ON...

All streets, roads & off highway vehicle (OHV) routes

All paved pathways around town

EXAMPLES:
Town Loop
Lakes Basin Path

E-BIKES NOT ALLOWED ON...

Non-motorized trails

EXAMPLES:
Mammoth Rock Trail
Mountain View Trail
Panorama Dome MTB Tr.
Horseshoe Lake Loop

BIKES (Non-Electric) ARE ALLOWED ON...

All streets, roads & off highway vehicle (OHV) routes

All paved pathways around town

Multi-use, non-motorized trails (non-wilderness)

EXAMPLES:
Town Loop
Lakes Basin Path

EXAMPLES:
Mammoth Rock Trail
Mountain View Trail
Panorama Dome MTB Tr.
Horseshoe Lake Loop



MAMMOTH LAKES TRAIL SYSTEM GUIDE TO

RESPONSIBLE RIDING



SPEED LIMIT 15

- Obey posted speed limits - 15mph on paved pathways; Watch your downhill speed
- Ride on the right; Pass on the left
- Ride slowly in congested areas
- Yield to foot traffic & horses & always be prepared to stop
- Stay on the trail; Leave No Trace
- Establish communication or use your bell when approaching other trail users
- Be aware of your E-Bike battery levels
- Know where your bike is allowed
- Bikes must follow the same laws as cars when riding on streets & roads
- Riders and passengers under 18 years old must wear helmets (CA State Law)

TRAIL COURTESY



BE FREINDLY! BE SAFE!
HAVE FUN!
SHARE THE TRAILS!

YIELD TO



Bike Bells



Winter Trail Grooming

Last Season:
December 16, 2021
To
March 25, 2022



SHADY REST WINTER TRAILS

NON-MOTORIZED/MULTI-USE



2021/2022

TRAIL COURTESY



YIELD TO

TRAIL ETIQUETTE & SAFETY

PLEASE ENJOY THIS FREE MULTI-USE TRAIL SYSTEM RESPONSIBLY:

- Respect other trail users. Be courteous and yield right of way according to etiquette code.
- **All users yield to grooming machines.**
- Do not ride or walk in cross country ski tracks.
- **FAT BIKES:** Yield to all other users. Skiers don't have brakes but you do.
Purpose built fat bikes only - 3.8" wide tires or wider. Recommended PSI 6-10. Leave room for others to pass (don't ride side-by-side blocking the trail). Do not ride in soft conditions. If you leave a rut deeper than 2 inches, it's too soft.
- Keep your dog leashed at all times.
- Pick up and dispose of any dog waste on and off trails and at trailheads.

MAMMOTH LAKES TRAIL SYSTEM

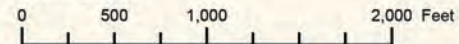


Non-Motorized Groomed Trails

Groomed Under Permit

Motorized OSV Trails

Groomed by USFS



SHERWINS WINTER TRAILS

MULTI-USE



2021/2022

TRAIL COURTESY



YIELD TO

TRAIL ETIQUETTE & SAFETY

PLEASE ENJOY THIS FREE MULTI-USE TRAIL SYSTEM RESPONSIBLY:

- Respect other trail users. Be courteous and yield right of way according to etiquette code.
- **Snowmobiles are an allowed use in this area. All users yield to grooming machines.**
- Do not ride or walk in cross country ski tracks.
- **FAT BIKES:** Yield to all other users. Skiers don't have brakes but you do.
Purpose built fat bikes only - 3.8" wide tires or wider. Recommended PSI 6-10.
Leave room for others to pass (don't ride side-by-side blocking the trail).
Do not ride in soft conditions. If you leave a rut deeper than 2 inches, it's too soft.
- Keep your dog leashed at all times.
- Pick up and dispose of any dog waste on and off trails and at trailheads.

MAMMOTH LAKES TRAIL SYSTEM



Sherwins Winter Trail
Groomed Under Permit

Snowplay Area

0 0.13 0.25 0.5 Miles



TRAIL CONDITIONS ON
MammothTrails.org

The Mammoth Lakes Trail System website provides online information for winter and summer recreation. Visit mammothtrails.org or scan this QR code, then look for "TRAIL CONDITIONS" or the "CLOUD + LIGHTNING" symbol in the upper right corner.




The Sherwins



Winter Trail Grooming



Winter Trail Grooming



MAMMOTH LAKES TRAIL SYSTEM

TRAILS DESTINATIONS ACTIVITIES

TRAIL NEWS
TRAIL CONDITIONS

Trail Conditions

02/02/22 AVALANCHE FORECAST: LOW avalanche danger persists at all elevations. Variable & challenging surface conditions exist throughout the forecast area and remain the greatest hazard in the backcountry. Monitor for isolated areas of unstable snow today and be prepared for very hard and slick surfaces. Find out more

01/31/22 The Shady Rest Winter Trails were groomed at 7:00 PM on January 31st.

01/31/22 The Sherwins Meadow Winter Trails were groomed at 3:30pm on January 31st.

01/20/22 The west loop of the Obsidian Dome Nordic Trails was groomed the night of January 19th for skating. Nordic tracks were laid down on all loops at 3:15pm on January 20th.

01/20/22 I Trail was groomed on January 19th.

01/20/22 G Trail was groomed on January 19th.

01/20/22 Q Trail was groomed on January 19th.

01/20/22 B Trail was groomed on January 19th.


01/20/22 A Trail was groomed on January 19th.

01/14/22 K Trail was groomed on January 13th.

12/20/21 D Trail was groomed to A Trail intersection as of December 20.

Weather Links

- [Dwebb Report](#)
- [Tahoe Daily Snow](#)
- [NOAA Weather Forecast](#)
- [USFS Trail Reports](#)
- [Parks & Rec Facilities Updates](#)



12/17/21 The Winter Trails in Shady Rest are Groomed and Open for the Season!

Thanks to the recent storms, we are pleased to announce that the Winter Trails in Shady Rest are groomed and open for the season. Our lead groomers Andrew and Scott got started this past Thursday night and will be grooming daily or as conditions allow.



New Winter Maps/Guides



TRAIL ETIQUETTE & SAFETY

PLEASE ENJOY THIS MULTI-USE TRAIL SYSTEM RESPONSIBLY

The National Forests are the lands of many uses - and many users. People traveling by skis, snowshoes, winter fat bikes and snowmobiles will share the same routes and areas.

- Respect other trail users. Be courteous and yield right of way. All users yield to grooming machines.
- All multi-use trails are two-way traffic.
- Always stay on the right-hand side of the trail. Pass on the left.
- Beware of blind turns! Slow down for oncoming traffic. Speed limit in slow zone areas is 15 mph.
- Please avoid all roads or areas posted with closures or restrictions, or as shown as closed on map.
- Keep dogs leashed at all times. Pick up and dispose of all dog waste on and off trails. Littering is prohibited by law.
- Winter travel in the backcountry requires proper gear and appropriate clothing. Be self-sufficient!
- Use extreme caution when recreating at night. Be visible and use the brightest lights you can find.
- Winter Fat Bikes (3.8" wide tires or wider with low tire pressure) are allowed on all groomed trails outside of ski areas.
- If winter fat biking leaves a rut deeper than 2 inches and/or you can't ride in a straight line... it's too soft to ride!
- EBIKES ARE NOT ALLOWED. On any non-motorized trails or Nordic Recreation Areas (Shady Rest, Obsidian Dome, Tamarack).
- Crossing two-lane plowed roads at right angles is permitted.
- Crossing four-lane plowed roads is prohibited unless otherwise posted.
- All snowmobiles must display a current state registration sticker to operate on National Forest Lands. www.dmv.ca.gov/portal/vehicle-registration/new-registration/

LEAVE NO TRACE!

SNOWMOBILES & OVER SNOW VEHICLES (OSV)

Miles of snow-covered roads and play areas are open to snowmobilers and over snow vehicles (OSV) in the Mammoth, June, and Mono Lake areas. A variety of terrain, from wide-open meadows, forested areas and the groomed OSV network provide opportunities for all skill levels. Trails that are specifically designated for snowmobiling are marked with orange diamonds and groomed by Inyo National Forest and commercial guide service providers. In addition to the groomed OSV trail network, there are approximately 150,000 acres open to over snow vehicles equipped and prepared to travel off the maintained trail system.

RECOMMENDED STAGING AREAS

SHADY REST PARK

- Located in Mammoth Lakes off Sawmill Cutoff Road.
- Starting point for A Trail, B Trail and X Trail.

CINDER SHED

- Located on the north side of HWY 203, 1.5 miles west of the Mammoth Scenic Loop/HWY 203 junction.
- Provides access to the C Trail and F Trail.
- The F Corridor is a congested slow zone (15 mph limit).

DEADMAN SUMMIT

- Located at the intersection of HWY 395 and Bald Mountain Road.
- Provides access to the I Trail, D Trail and G Trail.

LOOKOUT MOUNTAIN

- Located at the intersection of HWY 395 and the Mammoth Scenic Loop, east side.
- Provides access to the A Trail, L Trail and G Trail.

JUNE LAKE JUNCTION

- Located at the intersection of HWY 395 and HWY 158.
- Provides access to the I Trail and G Trail.

ADDITIONAL RESOURCES

- www.mammothtrails.org/activity/50/snowmobiling/
- www.monocounty.org/things-to-do/by-snow/snowmobiling/
- www.visitmammoth.com/snowmobiling/

CLOSED & RESTRICTED AREAS

All closed areas are indicated on the maps

AREAS CLOSED OR RESTRICTED TO MOTORIZED USERS ARE AS FOLLOWS:

- Mono Basin National Forest Scenic Area State Lands.
- Devils Postpile National Monument, Wilderness, and Research Natural Areas.
- Mammoth Mountain and June Mountain Ski Areas.
- All Blue diamond non-motorized trails including Obsidian Dome, Deadman Summit and Shady Rest Winter Trails
- The Mammoth Lakes Basin is closed to motorized use and bikes until April 17th of each year. After April 17th, the Lakes Basin is open to all users.
- Active timber sales and logging roads.
- Groomed winter trails are closed to all wheeled vehicles (except winter fat bikes).

NON-MOTORIZED ACTIVITIES

Recreating in the Eastern Sierra is an experience of unparalleled scenery, serenity, fitness and fun for beginners to experts, thanks to the varied terrain and unrivaled backdrop of the Sierra Nevada landscape. There are over 30 miles of groomed non-motorized winter trails in and around Mammoth Lakes, providing opportunities to explore the Inyo National Mammoth on skis, snowshoes, and winter fat bikes. There is a wide variety of terrain for every ability level.

The Mammoth Lakes Blue Diamond Nordic Routes offer 7 miles of un-groomed opportunities marked with blue diamonds attached to trees along the way. These ski and snowshoe routes were established by the US Forest Service in the early 1980s and have been maintained by the Range of Light Group, Sierra Club, in partnership with the US Forest Service.

MAMMOTH LAKES BLUE DIAMOND NORDIC ROUTES MAP
www.mtlpa.org/images/downloads/MammothLakesBlueDiamondNordicRoutesMap.pdf

ADDITIONAL RESOURCES

- www.mammothtrails.org/activity/40/cross-country-skiing/
- www.mammothmountain.com/winter-activities/cross-country-skiing
- www.visitmammoth.com/adventures/
- www.fs.usda.gov/recarea/inyo/recarea/?recid=81528



VISITOR INFORMATION

MAMMOTH LAKES WELCOME CENTER & RANGER STATION
 (760) 924-5500
 Located on HWY 203 at the entrance to the town of Mammoth Lakes.

MONO BASIN SCENIC AREA VISITOR CENTER
 (760) 647-3044
 Located off of HWY 395 in Lee Vining. No services in winter.

WHITE MOUNTAIN RANGER STATION
 (760) 873-2500
 Located on HWY 395 in Bishop.

TOWN OF MAMMOTH LAKES PARKS & RECREATION DEPARTMENT
 (760) 934-8989 ext 222,
www.mammothrecreation.com

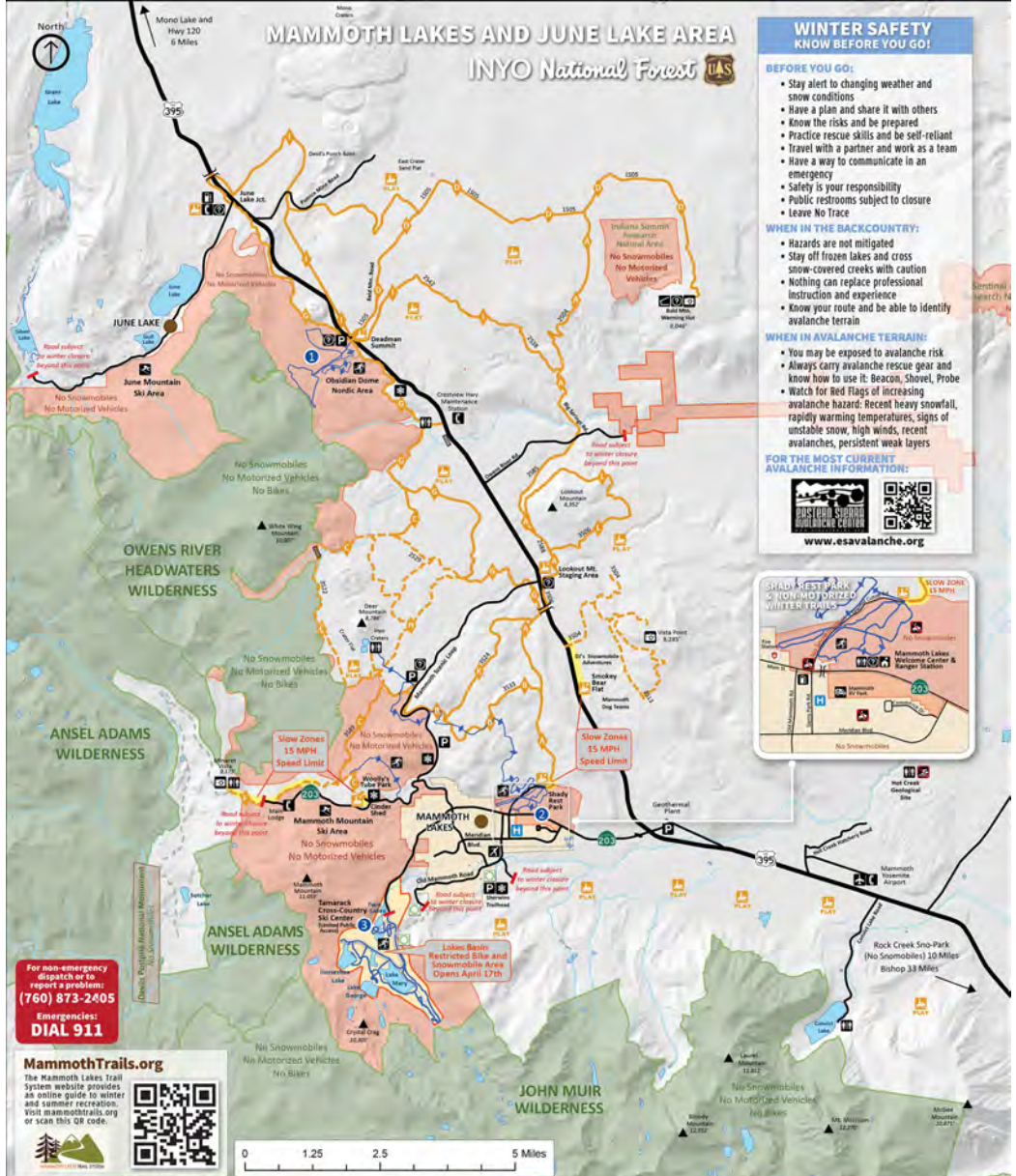
MAMMOTH LAKES TOURISM
 (760) 934-2712 or 1-888-60-MAMMOTH
www.visitmammoth.com

TRAIL CONDITIONS (MAMMOTH LAKES TRAIL SYSTEM)
www.mammothtrails.org/trail-conditions/

ADDITIONAL RESOURCES

www.mammothtrails.org/local-recreation/
www.sierraforever.com

**BE FRIENDLY! BE SAFE!
 HAVE FUN! SHARE THE TRAIL!**



MAMMOTH LAKES AND JUNE LAKE AREA

INYO National Forest

WINTER SAFETY

KNOW BEFORE YOU GO!

BEFORE YOU GO:

- Stay alert to changing weather and snow conditions
- Have a plan and share it with others
- Know the risks and be prepared
- Practice rescue skills and be self-reliant
- Travel with a partner and work as a team
- Have a way to communicate in an emergency
- Safety is your responsibility
- Public restrooms subject to closure
- Leave No Trace

WHEN IN THE BACKCOUNTRY:

- Hazards are not mitigated
- Stay off frozen lakes and cross snow-covered creeks with caution
- Nothing can replace professional instruction and experience
- Know your route and be able to identify avalanche terrain

WHEN IN AVALANCHE TERRAIN:

- You may be exposed to avalanche risk
- Always carry avalanche rescue gear and know how to use it: Beacon, Shovel, Probe
- Watch for Red Flags of increasing avalanche hazard: Recent heavy snowfall, rapidly warming temperatures, signs of unstable snow, high winds, recent avalanches, persistent weak layers

FOR THE MOST CURRENT AVALANCHE INFORMATION:



www.esavalanche.org



For non-emergency dispatch or to report a problem: **(760) 873-2405**
Emergencies: **DIAL 911**

MammothTrails.org
The Mammoth Lakes Trail System website provides an online guide to winter and summer recreation. Visit mammothtrails.org or scan this QR code.

<ul style="list-style-type: none"> Nordic Skiing Alpine Skiing Ice Skating Snowplay Area Hut Parking OSV Recommended Staging Area OSV Play Area Avalanche Beacon Checkpoint 	<ul style="list-style-type: none"> Vista Gas Phone Kiosk Restroom Ranger Station RV Park Airport Hospital 	<ul style="list-style-type: none"> Snowmobile Routes Groomed by USFS Snowmobile Routes Groomed under permit Non-Motorized Groomed Trails (No E-Bikes) Non-Motorized Ungroomed Trails Lakes Basin Winter Public Access Corridor Unplowed Road Major Roads 	<ul style="list-style-type: none"> Tunnel Gates Peaks Bridge Town Lakes Streams 	<ul style="list-style-type: none"> Slow Zones Speed Limit 15 MPH Closed to Snowmobiles Lakes Basin Restricted Area Wilderness Non-Motorized Obsidian Dome Nordic Area Shady Rest Winter Trails Tamarack Cross-Country Ski Center 	<p>TRAIL COURTESY</p> <p>YIELD TO</p>	<p>Kindly respect our environment</p> <p>LEAVE NO TRACE!</p> <p>BE BEAR AWARE!</p>
--	--	---	--	---	---	---

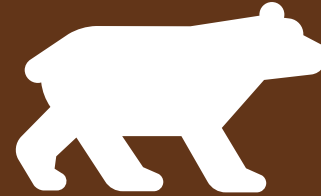
TRAIL COURTESY



YIELD TO

*Kindly respect
our environment*

LEAVE
NO
TRACE!



BE BEAR AWARE!

LEAVE NO TRACE
Be friendly! Be safe! Have fun! Share the trail!



MAMMOTH LAKES TRAIL SYSTEM



MAMMOTH
BREWING CO.



Cheers to 10 Years!

Vote Now

What type of 10th Anniversary Beer should Mammoth Brewing Company Create?

-  **Kolsch (Golden Trout)**
-  **Pilsner**
-  **Pale Ale**
-  **Light IPA**





MAMMOTH LAKES TRAIL SYSTEM



10th ANNIVERSARY

★ 2012 – 2022 ★